

| | | |
|--|------------------------|---|
| WAAS CH 65720 W15A | APP CRS 152° | Rwy Idg 5100 TDZE 58 Apt Elev 58 |
|--|------------------------|---|

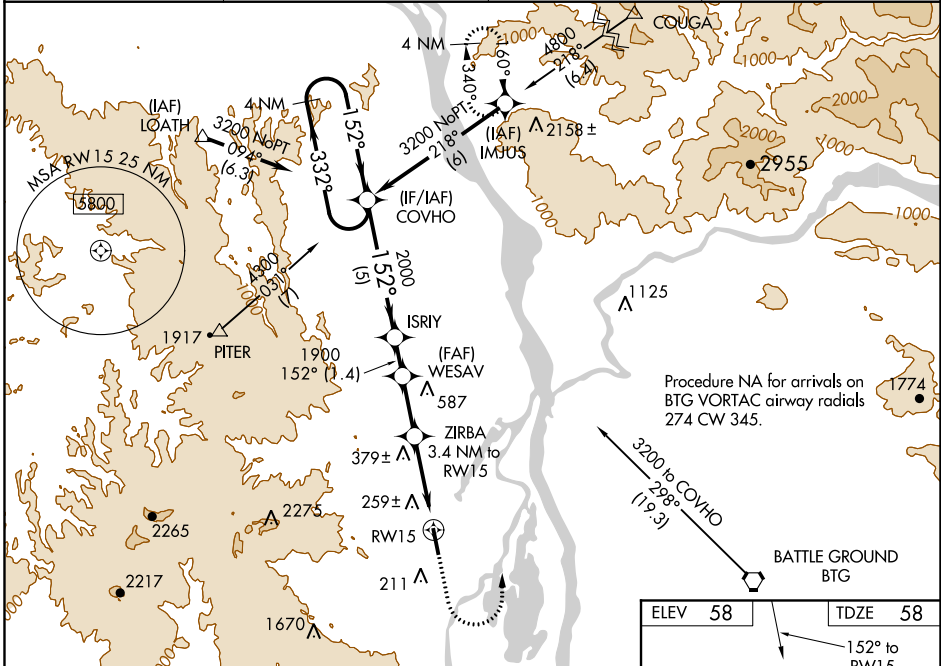
RNAV (GPS) RWY 15

SCAPPOOSE INDUSTRIAL AIRPARK (SPB)

⚠ Circling NA west of Rwy 15-33. DME/DME RNP-0.3 NA. Helicopter visibility reduction below 1 SM NA.
⚠ When VGSI inop, Straight in and Circling to Rwy 15 NA at night. When local altimeter setting not received, use Portland Intl altimeter setting and increase all DA/MDA 40 feet and increase LNAV/VNAV all Cats visibility 1/8 mile. Baro-VNAV NA when using Portland Intl altimeter setting. For uncompensated Baro-VNAV systems, LNAV/VNAV NA below -15°C (5°F) or above 42°C (107°F).

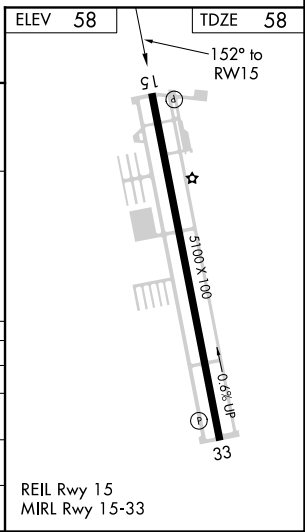
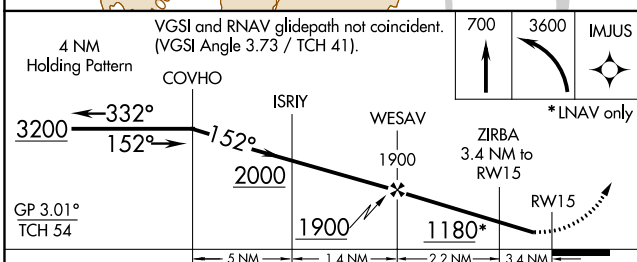
MISSED APPROACH: Climb to 700 then climbing left turn to 3600 direct IMJUS and hold.

| | | | |
|------------------------|---|---------------------------|-------------------------------|
| ASOS 135.875 | PORTLAND APP CON 124.35 299.2 | CLNC DEL 121.65 | UNICOM 122.8 (CTAF) |
|------------------------|---|---------------------------|-------------------------------|



NW-1, 01 MAR 2018 to 29 MAR 2018

NW-1, 01 MAR 2018 to 29 MAR 2018



| CATEGORY | A | B | C | D |
|--------------|-------|-------------|--------------|--------------|
| LPV DA | | 350-1 | 292 (300-1) | |
| LNAV/VNAV DA | | 580-1¾ | 522 (600-1¾) | |
| LNAV MDA | 640-1 | 582 (600-1) | 640-1¾ | 582 (600-1¾) |
| CIRCLING | 640-1 | 582 (600-1) | 640-1¾ | 640-2 |
| | | | 582 (600-1¾) | 582 (600-2) |