

WAAS CH 77602 W24A	APP CRS 242°	Rwy ldg TDZE Apt Elev	5280 2684 2684
----------------------------------------	------------------------	-----------------------------	-------------------------------------------

RNAV (GPS) RWY 24

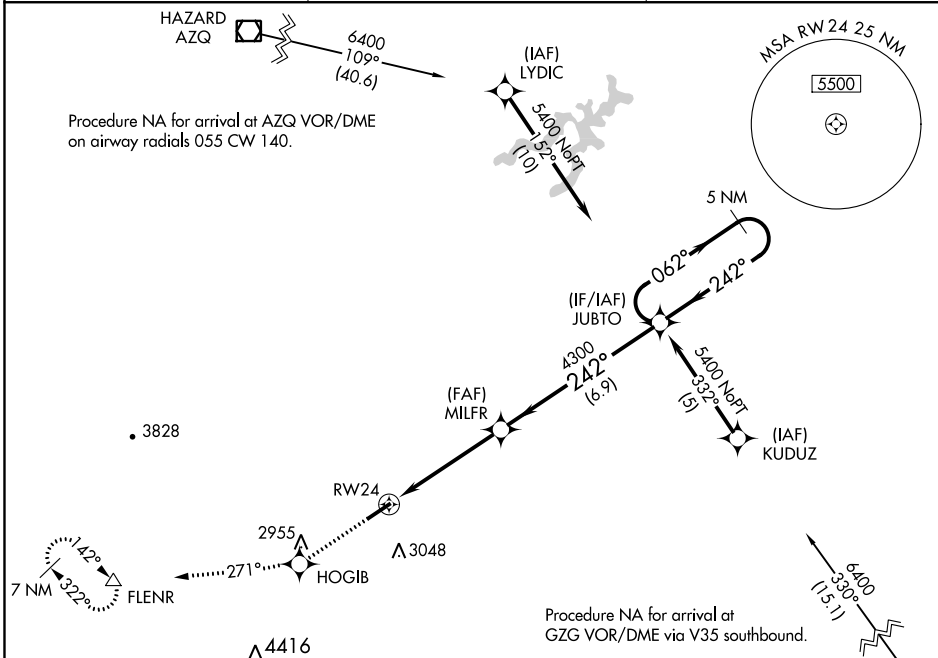
LONESOME PINE (LNP)

⚠ Inoperative table does not apply. For uncompensated Baro-VNAV systems, LNAV/VNAV NA below -20°C (-4°F) or above 43°C (110°F).
⚠ DME/DME RNP-0.3 NA. Visibility reduction by helicopters NA.

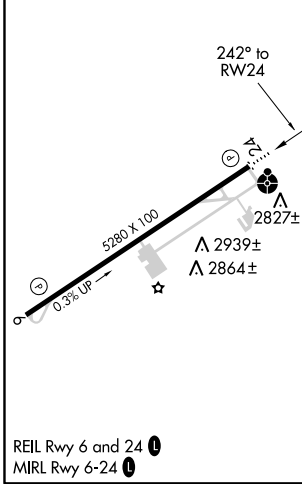
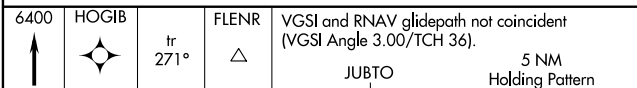


MISSED APPROACH: Climb to 6400 direct HOGIB and via 271° track to FLENR and hold, continue climb-in-hold to 6400.

AWOS-3 118.6	INDIANAPOLIS CENTER 126.575 253.5	UNICOM 123.0 (CTAF) 0
------------------------	---------------------------------------------	----------------------------------------



ELEV 2684	TDZE 2684
-----------	-----------



CATEGORY	A	B	C	D
LPV DA	3021 - 1¼ 337 (400-1¼)			
LNAV/VNAV DA	3126 - 1½ 442 (500-1½)			
LNAV MDA	3400 - 1	716 (800-1)	3400 - 2	3400 - 2¼ 716 (800-2¼)
CIRCLING	3440 - 1½	756 (800-1½)	3460 - 2¼ 776 (800-2¼)	3560 - 2¾ 876 (900-2¾)

NE-3, 01 MAR 2018 to 29 MAR 2018

NE-3, 01 MAR 2018 to 29 MAR 2018