

WAAS CH 48832 W36A	APP CRS 356°	Rwy Idg TDZE Apt Elev	6500 425 425
--	------------------------	-----------------------------	---

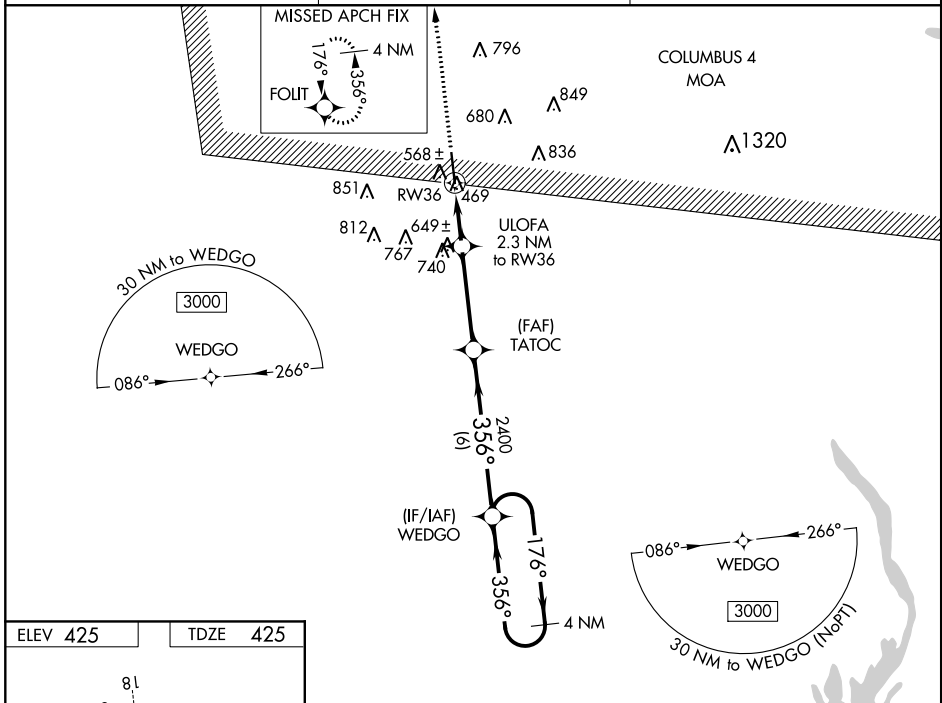
RNAV (GPS) RWY 36

ROSCOE TURNER (CRX)

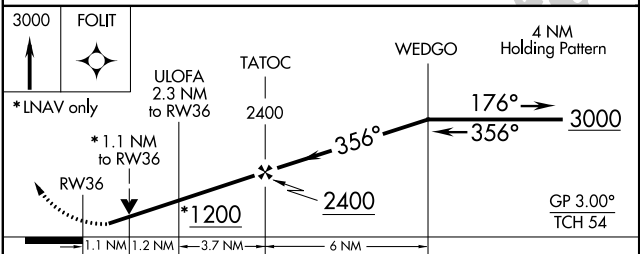
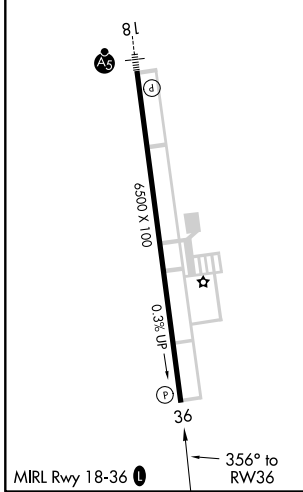
▼ For uncompensated Baro-VNAV systems, LNAV/VNAV NA below -15°C (5°F) or above 54°C (130°F). DME/DME RNP-0.3 NA. When local altimeter setting not received, use Tupelo altimeter setting and increase all DA 103 feet, and all MDA 120 feet, increase LPV, LNAV/VNAV all Cats visibility 3/8 mile, and LNAV Cats C/D and Circling Cat D visibility 1/4 mile. Baro-VNAV and VDP NA when using Tupelo altimeter setting. Rwy 36 helicopter visibility reduction below 3/4 SM NA.

MISSED APPROACH:
Climb to 3000 direct FOLIT and hold.

AWOS-3 118,675	MEMPHIS CENTER 135.9 273.55	UNICOM 122.8 (CTAF) 0
--------------------------	---------------------------------------	---------------------------------



ELEV 425	TDZE 425
----------	----------



CATEGORY	A	B	C	D
LPV DA		696-7/8	271 (300-7/8)	
LNAV/VNAV DA		729-1	304 (400-1)	
LNAV MDA	820-1	395 (400-1)	820-1 1/8	395 (400-1 1/8)
CIRCLING	900-1	475 (500-1)	900-1 1/2 475 (500-1 1/2)	980-2 555 (600-2)

SC-4, 01 MAR 2018 to 29 MAR 2018

SC-4, 01 MAR 2018 to 29 MAR 2018