

|  |                        |                             |   |
|--|------------------------|-----------------------------|---|
| WAAS<br>CH <b>42912</b><br><b>W19A</b> | APP CRS<br><b>189°</b> | Rwy Idg<br>TDZE<br>Apt Elev | <b>5000</b><br><b>467</b><br><b>473</b> |
|--|------------------------|-----------------------------|---|

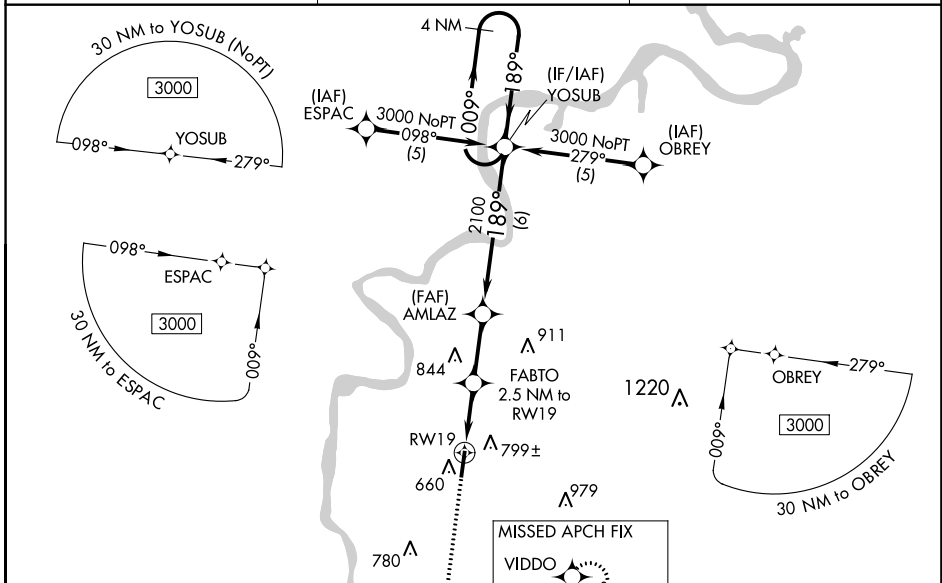
# RNAV (GPS) RWY 19

SAVANNAH-HARDIN COUNTY (SNH)

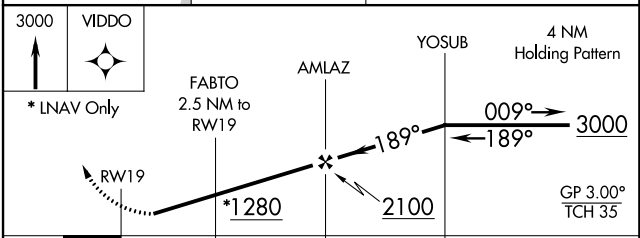
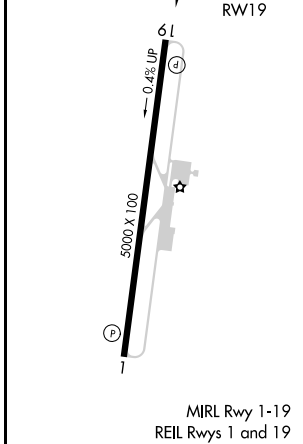
**⚠** Baro-VNAV NA when using Muscle Shoals altimeter setting. For uncompensated Baro-VNAV systems, LNAV/VNAV NA below -15° C (5° F) or above 54° C (130° F). DME/DME RNP-0.3 NA. Visibility reduction by helicopters NA. When local altimeter setting not received use Muscle Shoals, AL altimeter setting and increase all DA 102 feet and all MDA 120 feet and increase LPV visibility all Cats ½ mile, LNAV/VNAV visibility all Cats ¼ mile, LNAV Cat. C visibility ½ mile, Circling Cat. B visibility ¼ mile and Circling Cat. C visibility ½ mile.

**MISSED APPROACH:**  
Climb to 3000 direct VIDDO and hold.

|                          |                                       |                               |
|--------------------------|---------------------------------------|-------------------------------|
| AWOS-3<br><b>133.925</b> | MEMPHIS CENTER<br><b>124.35 239.3</b> | UNICOM<br><b>122.8 (CTAF)</b> |
|--------------------------|---------------------------------------|-------------------------------|



|          |          |
|----------|----------|
| ELEV 473 | TDZE 467 |
|----------|----------|



| CATEGORY     | A      | B           | C | D            |              |    |
|--------------|--------|-------------|---|--------------|--------------|----|
| LPV DA       | 873-1½ |             |   | 406 (400-1½) | NA           |    |
| LNAV/VNAV DA | 999-2  |             |   | 532 (600-2)  | NA           |    |
| LNAV MDA     | 1060-1 | 593 (600-1) |   | 1060-1½      | 593 (600-1½) | NA |
| CIRCLING     | 1100-1 | 627 (700-1) |   | 1100-1¾      | 627 (700-1¾) | NA |

SE-1, 01 MAR 2018 to 29 MAR 2018

SE-1, 01 MAR 2018 to 29 MAR 2018