

VORTAC VHP 116.3 Chan 110	APP CRS 201°	Rwy Idg 5500 TDZE 922 Apt Elev 922
---	------------------------	---

VOR RWY 18

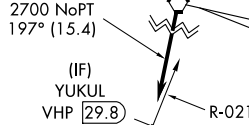
INDIANAPOLIS EXECUTIVE (TYQ)

▼ Rwy 18 helicopter visibility reduction below 3/4 SM NA. DME required. When local altimeter setting not received, use Indianapolis Intl altimeter setting and increase all MDA 80 feet and S-18 Cats C/D visibilities 1/4 mile. VDP NA when using Indianapolis Intl altimeter setting.

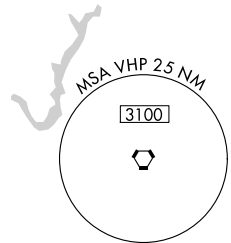
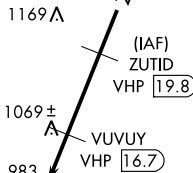
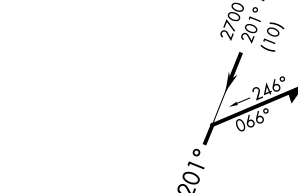
MISSED APPROACH: Climb to 2700 direct VHP VORTAC and hold.

AWOS-3PT 120.725	INDIANAPOLIS APP CON 124.65 127.15 317.8	GCO 121.725	UNICOM 123.05 (CTAF)
----------------------------	--	-----------------------	--------------------------------

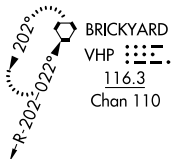
Procedure NA for arrivals at OKK VORTAC on V305 northbound.



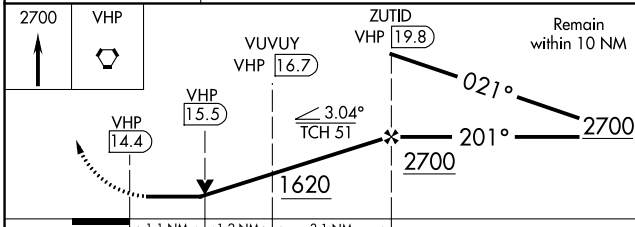
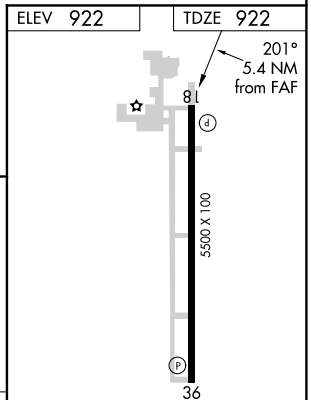
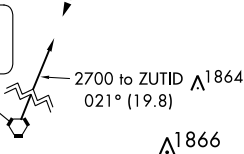
IAF
KOKOMO
113.5 OKK
Chan 82



MISSED APCH FIX



BRICKYARD
116.3 VHP
Chan 110



CATEGORY	A	B	C	D
S-18	1320-1 398 (400-1)		1320-1 1/8 398 (400-1 1/8)	
CIRCLING	1360-1 438 (500-1)	1380-1 458 (500-1)	1400-1 1/2 478 (500-1 1/2)	1480-2 558 (600-2)

HIRL Rwy 18-36
REIL Rwys 18 and 36