

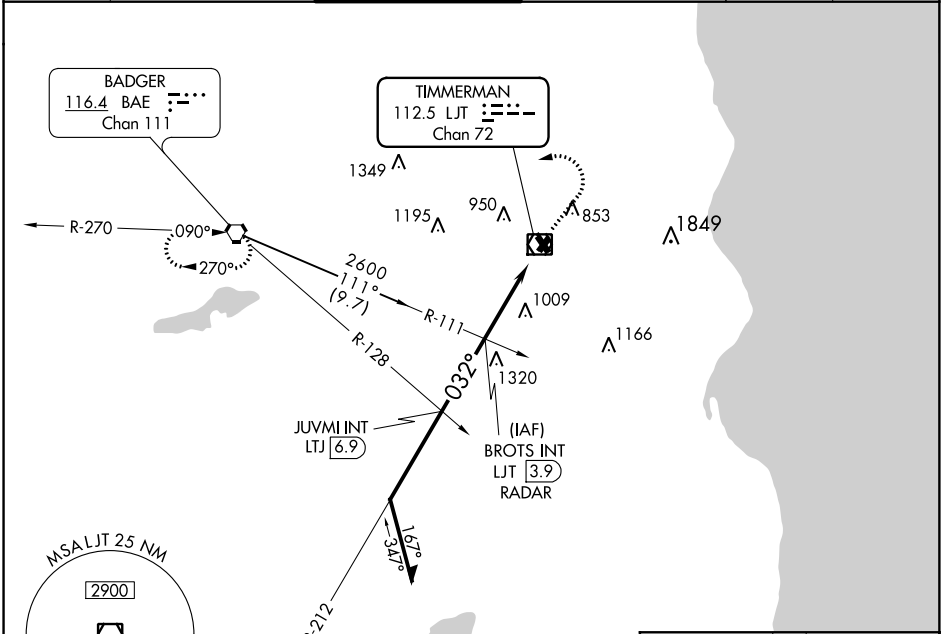
VOR/DME LJT 112.5 Chan 72	APP CRS 032°	Rwy Idg TDZE Apt Elev	3201 738 745
---	------------------------	-----------------------------	---

VOR RWY 4L
LAWRENCE J TIMMERMAN (MWC)

⚠ Circling to Rwy 4R, 15R, 22L, 33L NA at night. When VGSI inoperative, procedure NA at night. When local altimeter setting not received, use General Mitchell Intl altimeter setting and increase all MDA 40 feet and S-4L Cat C and D visibility 1/8 mile, and Circling Cat C visibility 1/8 mile. Visibility reduction by helicopters NA.

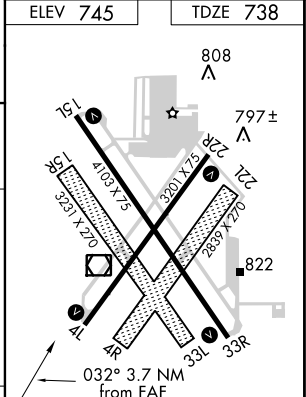
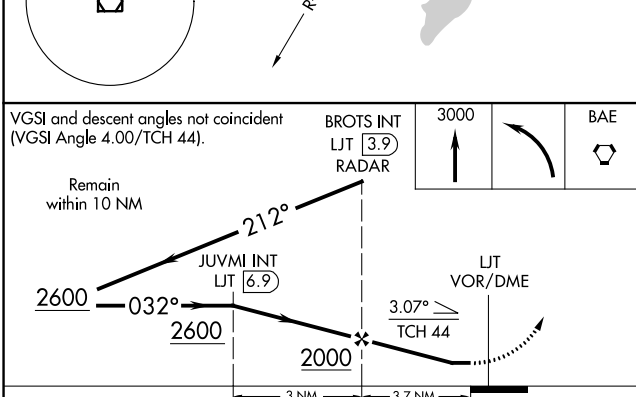
MISSED APPROACH: Climb to 3000 then left turn direct BAE VORTAC and hold.

ATIS 128.3	MILWAUKEE APP CON 125.35 307.0	TIMMERMAN TOWER ★ 120.5 (CTAF) 0	MILWAUKEE CLNC DEL 121.7 (when tower closed)	GND CON 121.7	UNICOM 122.95
----------------------	--	--	---	-------------------------	-------------------------



EC-3, 01 MAR 2018 to 29 MAR 2018

EC-3, 01 MAR 2018 to 29 MAR 2018



CATEGORY	A	B	C	D
S-4L	1300-1	562 (600-1)	1300-1 1/8	562 (600-1 1/8)
CIRCLING	1300-1 555 (600-1)	1340-1 595 (600-1)	1340-1 1/8 595 (600-1 1/8)	1340-2 595 (600-2)

MIRL Rwy 4L-22R and 15L-33R	1
REIL Rwy 4L, 22R, 15L and 33R	1
FAF to MAP 3.7 NM	
Knots	60 90 120 150 180
Min:Sec	3:42 2:28 1:51 1:29 1:14