

WAAS CH 69524 W22A	APP CRS 218°	Rwy Idg TDZE Apt Elev	3201 739 745
--	------------------------	-----------------------------	---

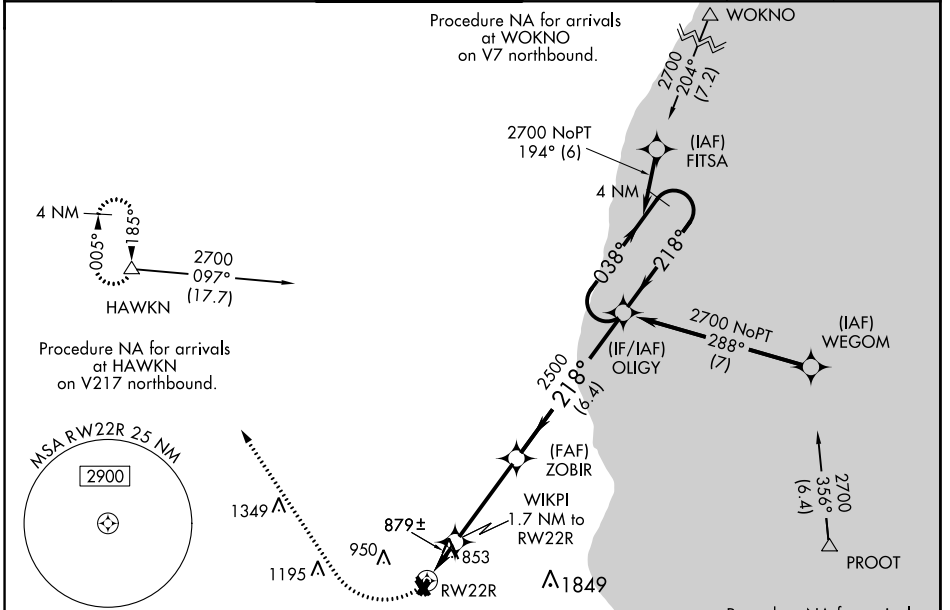
RNAV (GPS) RWY 22R

LAWRENCE J TIMMERMAN (MWC)

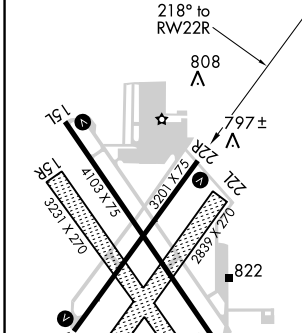
⚠ Circling to Rwy 4R, 15R, 22L, 33L NA at night. DME/DME RNP-0.3 NA. Visibility reduction by helicopters NA. When VGSI inoperative, procedure NA at night. When local altimeter setting not received use General Mitchell Intl altimeter setting: increase all MDA 40 feet, increase LP and LNAV visibility Cats C and D 1/8 mile; increase Circling visibility Cat C 1/4 mile.

⚠ MISSED APPROACH: Climbing right turn to 3000 direct HAWKN and hold.

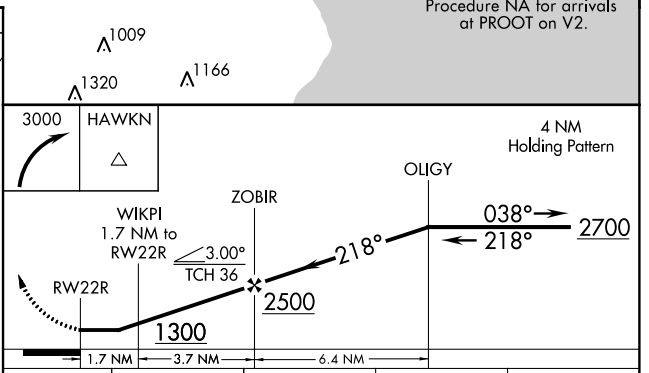
ATIS 128.3	MILWAUKEE APP CON 125.35 307.0	TIMMERMAN TOWER ★ 120.5 (CTAF) 0	MILWAUKEE CLNC DEL 121.7 (when tower closed)	GND CON 121.7	UNICOM 122.95
----------------------	--	--	---	-------------------------	-------------------------



ELEV 745	TDZE 739
----------	----------



REIL Rwy 4L, 22R, 15L and 33R	0
MIRL Rwy 4L-22R and 15L-33R	0



CATEGORY	A	B	C	D
LP MDA	1160-1	421 (500-1)	1160-1¼	421 (500-1¼)
LNAV MDA	1160-1	421 (500-1)	1160-1¼	421 (500-1¼)
CIRCLING	1220-1 475 (500-1)	1340-1 595 (600-1)	1340-1½ 595 (600-1½)	1340-2 595 (600-2)

EC-3, 01 MAR 2018 to 29 MAR 2018

EC-3, 01 MAR 2018 to 29 MAR 2018