

# LOC RWY 15L

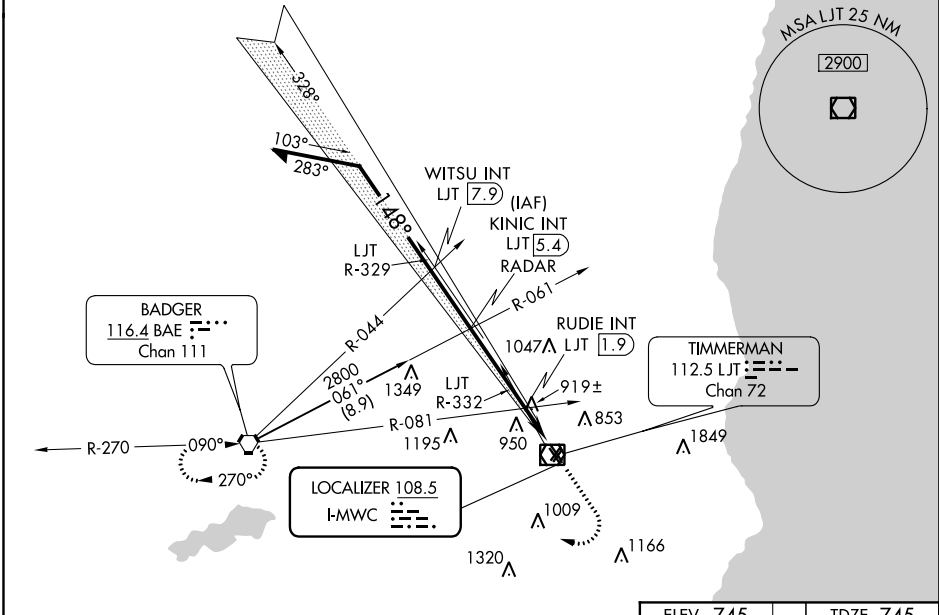
LAWRENCE J TIMMERMAN (MWC)

LOC I-MWC <b>108.5</b>	APP CRS <b>148°</b>	Rwy Idg TDZE Apt Elev	<b>4103</b> <b>745</b> <b>745</b>
---------------------------	------------------------	-----------------------------	---

**⚠** Helicopter visibility reduction below 1 SM NA. Night landing: Rwy 4L/R, 15L, 22L/R, 33L/R NA. When local altimeter setting not received, use General Mitchell Intl altimeter setting and increase all MDA 40 feet; increase S-LOC 15L Cat C and D visibility 1/8 mile and Circling Cat C 1/4 mile, increase RUDIE FIX minimums S-LOC 15L Cat C and D visibility 1/8 mile and Circling Cat C 1/4 mile. # DME from LJT VOR/DME.

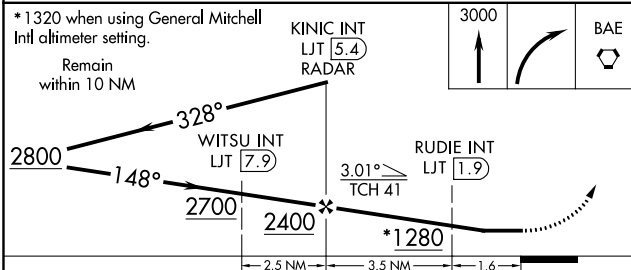
**MISSED APPROACH:**  
Climb to 3000 then right turn direct BAE VORTAC and hold.

ATIS <b>128.3</b>	MILWAUKEE APP CON <b>125.35 307.0</b>	TIMMERMAN TOWER ★ <b>120.5 (CTAF) 0</b>	MILWAUKEE CLNC DEL <b>121.7</b> (when tower closed)	GND CON <b>121.7</b>	UNICOM <b>122.95</b>
----------------------	--	--	---	-------------------------	-------------------------

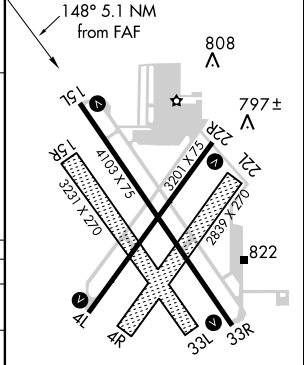


EC-3, 01 MAR 2018 to 29 MAR 2018

EC-3, 01 MAR 2018 to 29 MAR 2018



ELEV 745	TDZE 745
----------	----------



CATEGORY	A	B	C	D
S-LOC 15L	1280-1	535 (600-1)	1280-1½	535 (600-1½)
CIRCLING	1280-1 535 (600-1)	1340-1 595 (600-1)	1340-1½ 595 (600-1½)	1340-2 595 (600-2)
RUDIE FIX MINIMUMS (DUAL VOR RECEIVERS OR DME REQUIRED #)				
S-LOC 15L	1180-1	435 (500-1)	1180-1¼	435 (500-1¼)
CIRCLING	1220-1 475 (500-1)	1340-1 595 (600-1)	1340-1½ 595 (600-1½)	1340-2 595 (600-2)

REIL Rws 4L, 15L, 22R and 33R					
MIRL Rws 4L-22R and 15L-33R					
FAF to MAP 5.1 NM					
Knots	60	90	120	150	180
Min:Sec	5:06	3:24	2:33	2:02	1:42

# LOC RWY 15L