

WAAS CH <b>53302</b> <b>W04A</b>	APP CRS <b>042°</b>	Rwy Idg <b>5997</b> TDZE <b>3374</b> Apt Elev <b>3374</b>
--	------------------------	---

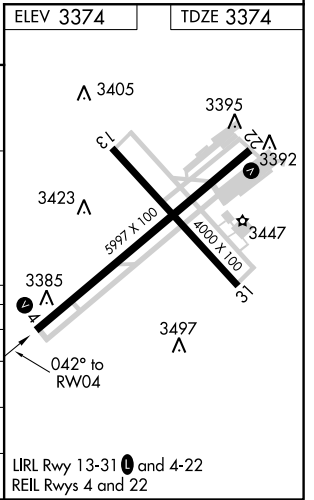
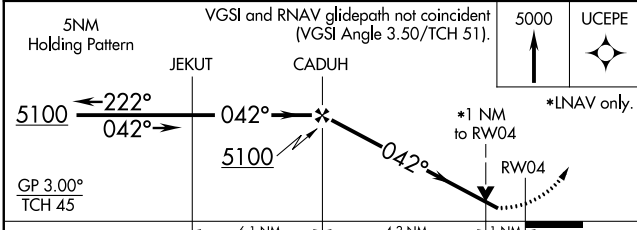
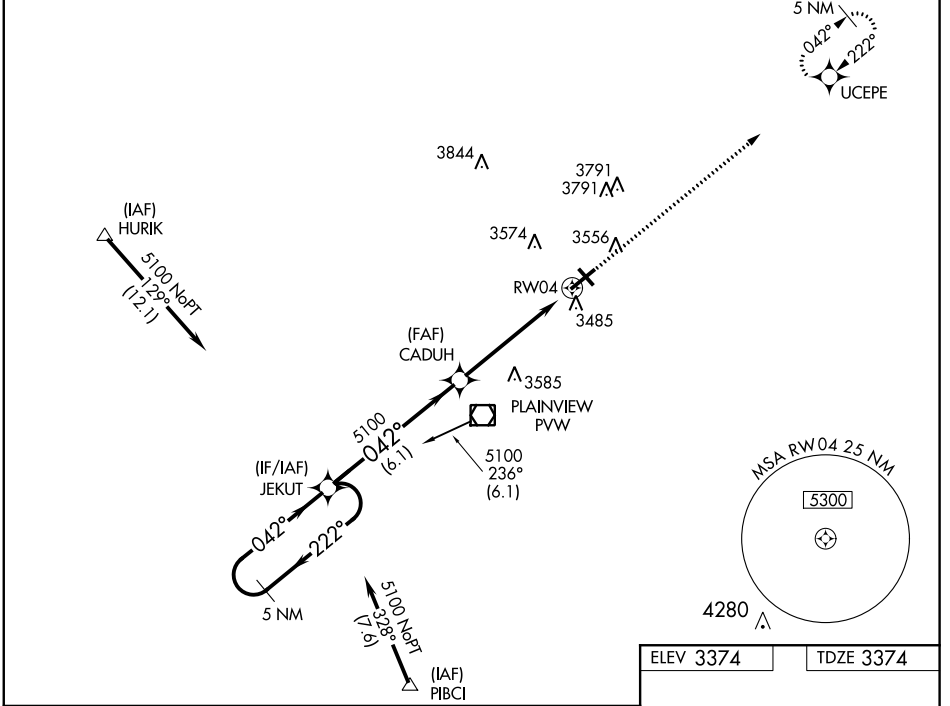
# RNAV (GPS) RWY 4

HALE COUNTY (P<sub>VW</sub>)

**⚠** DME/DME RNP-0.3 NA. For uncompensated Baro-VNAV systems, LNAV/VNAV NA below -21°C (-5°F) or above 42°C (108°F). If local altimeter setting not received, use Lubbock altimeter setting and increase all DAs/MDAs 100 feet. VDP and Baro-VNAV NA when using Lubbock altimeter setting. Helicopter visibility reduction below ¾ SM NA. When local altimeter setting is not received, use Lubbock altimeter setting; increase all DA 83 feet and increase all LPV and LNAV/VNAV visibility ¼ mile, increase all MDA 100 feet and LNAV Cat C/D and Circling Cat C visibility ¼ mile.

**⚠** MISSED APPROACH: Climb to 5000, direct UCEPE and hold.

ASOS <b>119.675</b>	LUBBOCK APP CON <b>119.2 351.8</b>	CLNC DEL <b>121.7</b>	UNICOM <b>123.0 (CTAF) 0</b>
------------------------	---------------------------------------	--------------------------	---------------------------------



CATEGORY	A	B	C	D
LPV DA		3624-1	250 (300-1)	
LNAV/ VNAV DA		3730-1¼	356 (400-1¼)	
LNAV MDA	3800-1	426 (500-1)	3800-1¼	426 (500-1¼)
CIRCLING	3920-1¼ 546 (600-1¼)	3940-1¼ 566 (600-1¼)	3940-1½ 566 (600-1½)	3940-2 566 (600-2)

SC-2. 01 MAR 2018 to 29 MAR 2018

SC-2. 01 MAR 2018 to 29 MAR 2018

LIRL Rwy 13-31 0 and 4-22  
 REIL Rws 4 and 22