

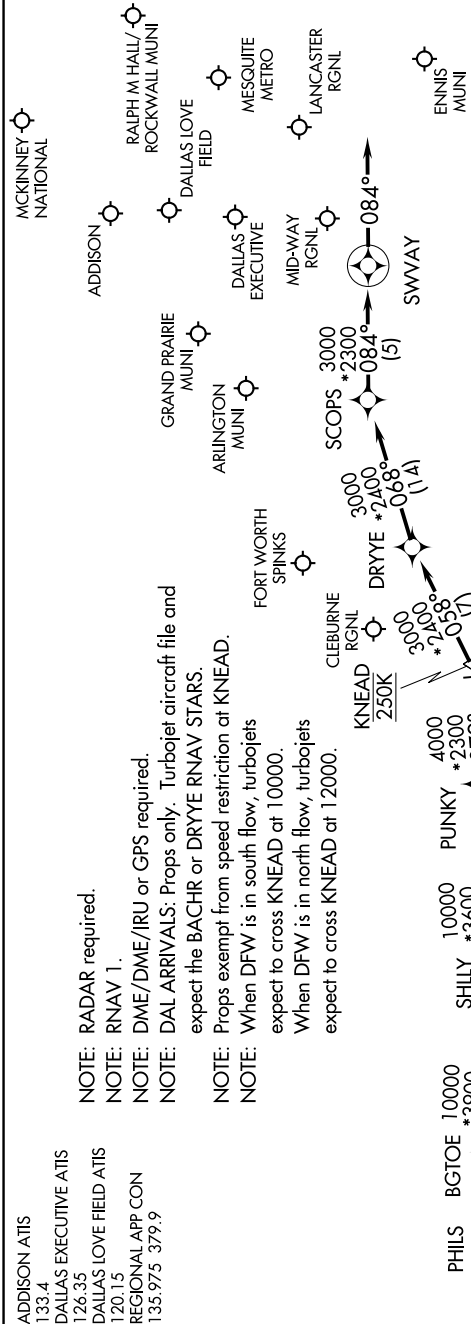
SWVAY FOUR ARRIVAL (RNAV)

DALLAS, TEXAS

SC-2. 01 MAR 2018 to 29 MAR 2018

- ADDITION ATIS 133.4
- DALLAS EXECUTIVE ATIS 126.35
- DALLAS LOVE FIELD ATIS 120.15
- REGIONAL APP CON 135.975 379.9

- NOTE: RADAR required.
- NOTE: RNAV 1.
- NOTE: DME/DME/IRU or GPS required.
- NOTE: DAL ARRIVALS: Props only. Turboprop aircraft file and expect the BACHR or DRYEY RNAV STARS.
- NOTE: Props exempt from speed restriction at KNEAD.
- NOTE: When DFW is in south flow, turboprops expect to cross KNEAD at 10000.
- NOTE: When DFW is in north flow, turboprops expect to cross KNEAD at 12000.



ARRIVAL ROUTE DESCRIPTION

- BGTOE TRANSITION (BGTOE.SWVAY4)
- DITSY TRANSITION (DITSY.SWVAY4)
- FRSTI TRANSITION (FRSTI.SWVAY4): (For ACT and GRK Terminal Area departures only)
- SHILLY TRANSITION (SHILLY.SWVAY4): (For ABI Terminal Area departures only).

From KNEAD on track 058° to DRYEY, then on track 068° to SCOPES, then on track 084° to SWVAY, then on track 084°. Expect RADAR vectors to final approach course.

SC-2. 01 MAR 2018 to 29 MAR 2018

SWVAY FOUR ARRIVAL (RNAV)

DALLAS, TEXAS

NOTE: Chart not to scale.