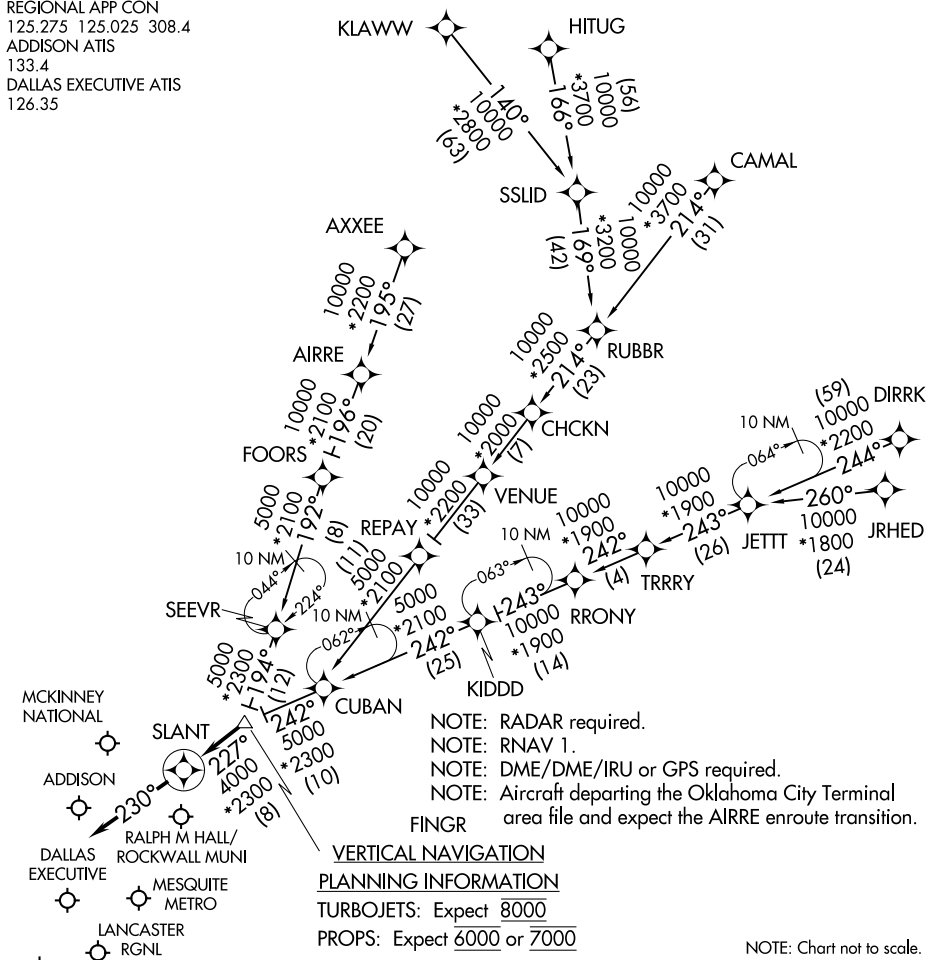


SLANT THREE ARRIVAL (RNAV)

DALLAS, TEXAS

REGIONAL APP CON
 125.275 125.025 308.4
 ADDISON ATIS
 133.4
 DALLAS EXECUTIVE ATIS
 126.35



ARRIVAL ROUTE DESCRIPTION

AIRRE TRANSITION (AIRRE.SLANT3): (For traffic filing FL190 and below.)
AXXEE TRANSITION (AXXEE.SLANT3): (For aircraft filing FL230 and below.)
CAMAL TRANSITION (CAMAL.SLANT3)
DIRRK TRANSITION (DIRRK.SLANT3)
HITUG TRANSITION (HITUG.SLANT3)
JRHED TRANSITION (JRHED.SLANT3): (ATC assigned only.)
KLAWW TRANSITION (KLAWW.SLANT3)
RRONY TRANSITION (RRONY.SLANT3): (For aircraft filing FL230 and below.)

From FINGR on track 227° to SLANT, then on track 230°.
 Expect RADAR vectors to final approach course.

SLANT THREE ARRIVAL (RNAV)

DALLAS, TEXAS

SC-2, 01 MAR 2018 to 29 MAR 2018

SC-2, 01 MAR 2018 to 29 MAR 2018