

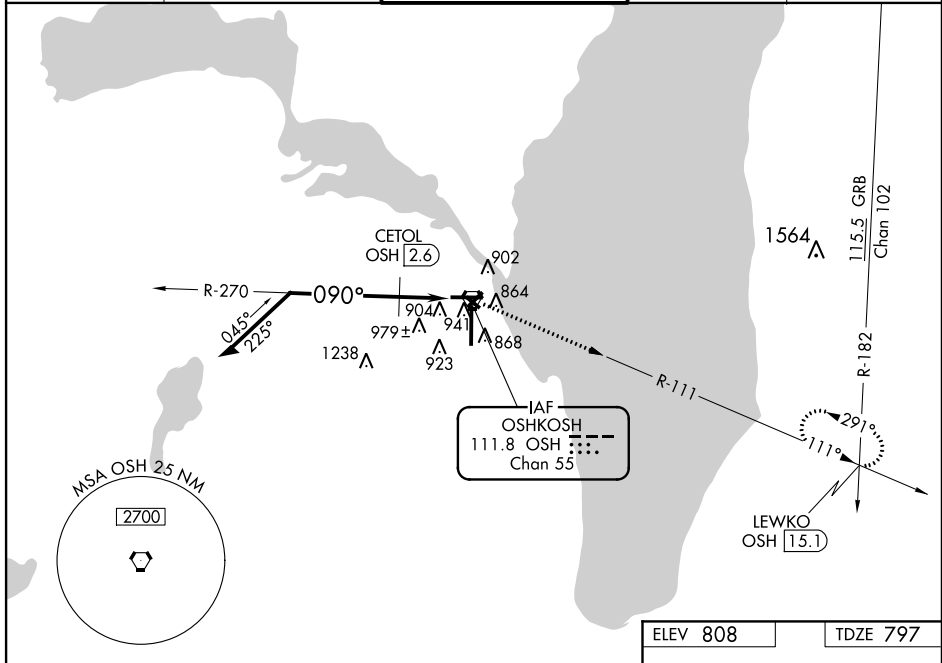
VORTAC OSH <b>111.8</b> Chan <b>55</b>	APP CRS <b>090°</b>	Rwy Idg <b>5648</b> TDZE <b>797</b> Apt Elev <b>808</b>
--	------------------------	---

**VOR RWY 9**  
WITTMAN RGNL (OSH)

**⚠** Circling to Rwy 5, 23, and 31 NA at night. When local altimeter setting not received, use Fond Du Lac altimeter setting and increase all MDA 40 feet and increase S-9 Cats C and D visibility and Circling Cat C visibility  $\frac{1}{8}$  mile and Circling Cat D visibility  $\frac{1}{4}$  mile, increase CETOL fix minimums Circling Cat D visibility  $\frac{1}{4}$  mile. VDP NA with Fond Du Lac altimeter setting. Helicopter visibility reduction below  $\frac{3}{4}$  SM NA.

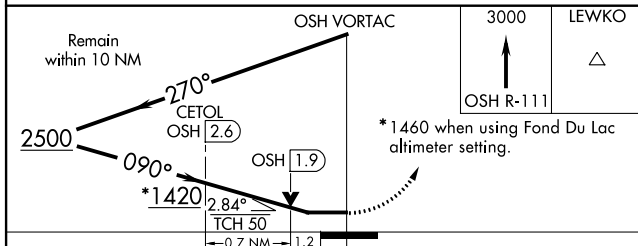
**MISSED APPROACH:** Climb to 3000 on OSH VORTAC R-111 to LEWKO INT/OSH 15.1 DME and hold.

ATIS <b>125.9</b>	MILWAUKEE APP CON <b>127.0 263.075</b>	<b>OSHKOSH TOWER ★</b> <b>118.5 (CTAF) 290.9</b>	GND CON <b>121.9</b>	UNICOM <b>122.95</b>
----------------------	---	---	-------------------------	-------------------------



EC-3, 01 MAR 2018 to 29 MAR 2018

EC-3, 01 MAR 2018 to 29 MAR 2018



CATEGORY	A	B	C	D
S-9	1420-1	623 (700-1)	1420-1 $\frac{3}{4}$	623 (700-1 $\frac{3}{4}$ )
<b>C</b> CIRCLING	1420-1	612 (700-1)	1420-1 $\frac{3}{4}$	1440-2 632 (700-2)
<b>CETOL FIX MINIMUMS</b>				
S-9	1240-1	443 (500-1)	1240-1 $\frac{3}{8}$	443 (500-1 $\frac{3}{8}$ )
<b>C</b> CIRCLING	1280-1 472 (500-1)	1300-1 492 (500-1)	1360-1 $\frac{1}{2}$ 552 (600-1 $\frac{1}{2}$ )	1440-2 632 (700-2)

