

WAAS CH 86734 W09A	APP CRS 093°	Rwy Idg TDZE 797 Apt Elev 808	5648 797 808
--	------------------------	---	---

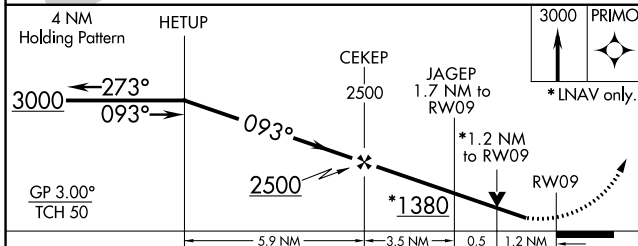
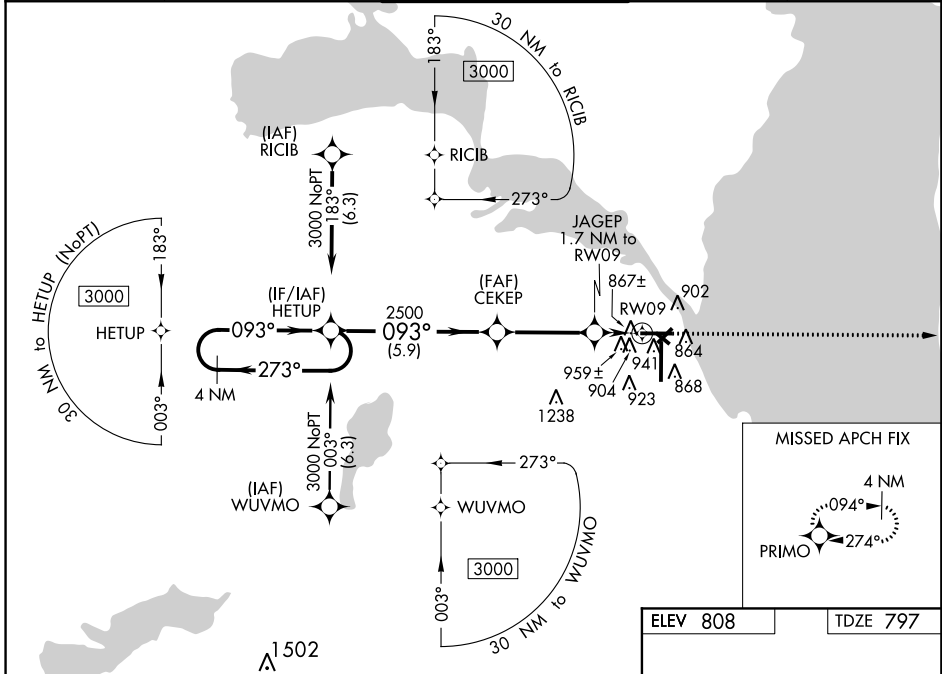
RNAV (GPS) RWY 9

WITTMAN RGNL (OSH)

⚠ Circling to Rwy 5, 23, 31 NA at night. For uncompensated Baro-VNAV systems, LNAV/VNAV NA below -20°C (-4°F) or above 54°C (130°F). DME/DME RNP-0.3 NA. VDP and Baro-VNAV NA with using Fond Du Lac County altimeter setting. When local altimeter setting not received, use Fond Du Lac altimeter setting and increase all DA 31 feet and all MDA 40 feet; increase LPV and LNAV/VNAV all Cats visibility and LNAV Cats C/D visibility 1/8 mile, increase Circling Cat D visibility 1/4 mile. Helicopter visibility reduction below 3/4 SM NA.

MISSED APPROACH:
Climb to 3000 direct PRIMO and hold.

ATIS 125.9	MILWAUKEE APP CON 127.0 263.075	OSHKOSH TOWER ★ 118.5(CTAF) 290.9	GND CON 121.9	UNICOM 122.95
----------------------	---	---	-------------------------	-------------------------



ELEV 808	TDZE 797
----------	----------

Runway Details: 6179 X 150, 0.4% UP, 0.8% DOWN, 36 ft width.

Navigation Aids: PRIMO (3000), TWR (941), RWY 9 (808).

Other: REIL Rwy 18 and 27, HIRL Rwy 9-27, and 18-36.

CATEGORY	A	B	C	D
LPV DA		1055-3/4	258 (300-3/4)	
LNAV/VNAV DA		1140-1 1/8	343 (400-1 1/8)	
LNAV MDA	1220-1	423 (500-1)	1220-1 1/4	423 (500-1 1/4)
C CIRCLING	1280-1 472 (500-1)	1300-1 492 (500-1)	1360-1 1/2 552 (600-1 1/2)	1440-2 632 (700-2)

EC-3, 01 MAR 2018 to 29 MAR 2018

EC-3, 01 MAR 2018 to 29 MAR 2018