

|  |                        |                 |
|--|------------------------|-----------------|
| WAAS<br>CH <b>65602</b><br><b>W36A</b> | APP CRS<br><b>004°</b> | Rwy Idg<br>8002 |
|  |                        | TDZE<br>808     |
|  |                        | Apt Elev<br>808 |

# RNAV (GPS) RWY 36

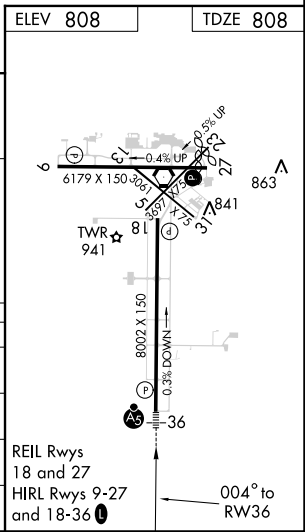
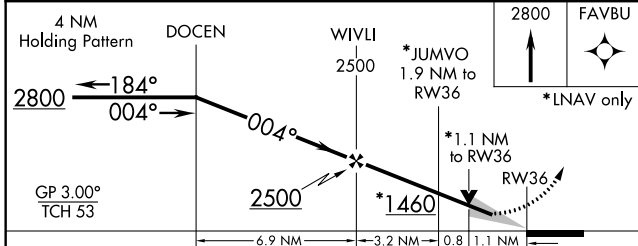
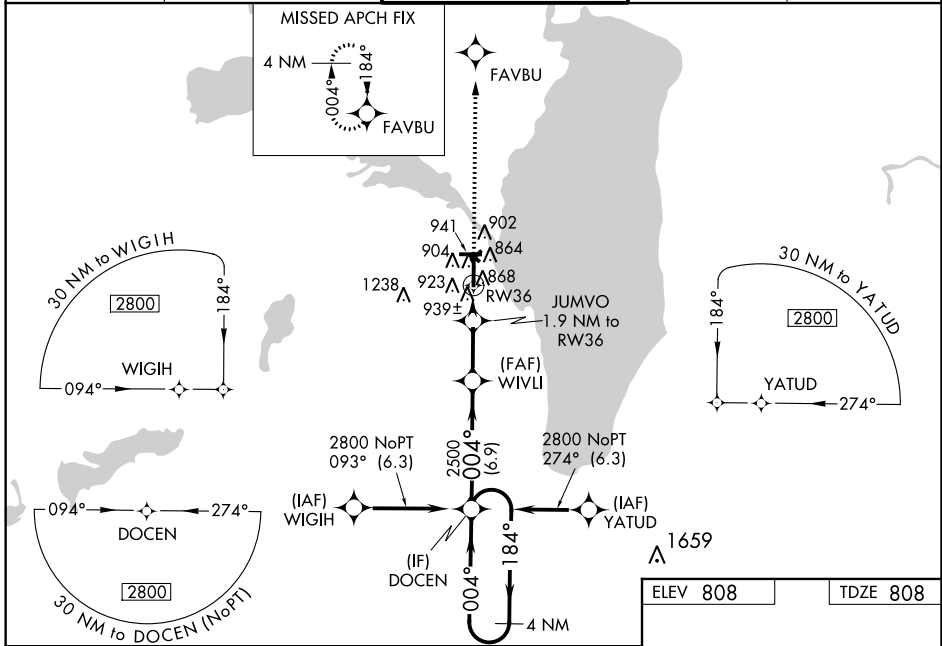
WITTMAN RGNL (OSH)

**⚠** For uncompensated Baro-VNAV systems, LNAV/VNAV NA below -20°C (-4°F) or above 54°C (130°F). DME/DME RNP-0.3 NA. When local altimeter setting not received, use Fond Du Lac altimeter setting and increase all DA 31 feet and all MDA 40 feet; increase LNAV/VNAV all Cats visibility to RVR 5600, increase LNAV Cat C/D visibility to RVR 4000, increase Circling Cat D visibility ¼ mile. For inop MALSRS when using Fond Du Lac altimeter setting, increase LNAV/VNAV all Cats visibility to 1½ mile and LNAV Cats C/D to RVR 6000. Baro-VNAV and VDP NA when using Fond Du Lac altimeter setting. Circling to Rwy 5, 23 and 31 NA at night. \*\*RVR 1800 authorized with use of FD or AP or HUD to DA.

**MALSRS**

**MISSED APPROACH:**  
Climb to 2800 direct FAVBU and hold.

|                      |   |  |                         |                         |
|----------------------|---|--|-------------------------|-------------------------|
| ATIS<br><b>125.9</b> | MILWAUKEE APP CON<br><b>127.0 263.075</b> | OSHKOSH TOWER ★<br><b>118.5 (CTAF) 290.9</b> | GND CON<br><b>121.9</b> | UNICOM<br><b>122.95</b> |
|----------------------|---|--|-------------------------|-------------------------|



| CATEGORY     | A                     | B                     | C                      | D                     |
|--------------|-----------------------|-----------------------|------------------------|-----------------------|
| LPV DA**     | 1008/24 200 (200-½)   |                       |                        |                       |
| LNAV/VNAV DA | 1247/50 439 (500-1)   |                       |                        |                       |
| LNAV MDA     | 1200/24               | 392 (400-½)           | 1200/35                | 392 (400-¾)           |
| CIRCLING     | 1280-1<br>472 (500-1) | 1300-1<br>492 (500-1) | 1360-1½<br>552 (600-½) | 1440-2<br>632 (700-2) |

EC-3, 01 MAR 2018 to 29 MAR 2018

EC-3, 01 MAR 2018 to 29 MAR 2018