

VOR SSF 108.4	APP CRS 337°	Rwy Idg 3756 TDZE 571 Apt Elev 577
-------------------------	------------------------	---

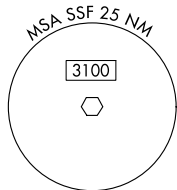
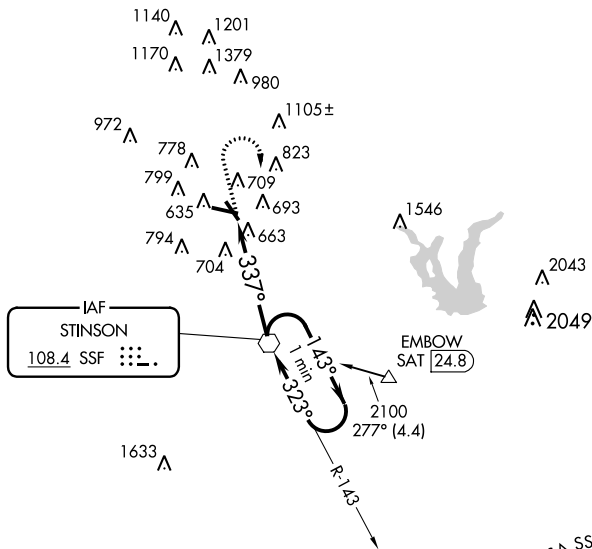
VOR RWY 32

STINSON MUNI (SSF)

⚠ When local altimeter setting not received, use San Antonio Intl altimeter setting and increase all MDAs 60 feet, and S-32 Cat C visibility ¼ mile. Night landing: 9, 14, 32 NA. Helicopter visibility reduction below 1 SM NA.

⚠ MISSED APPROACH: Climb to 1400 then climbing right turn to 2500 direct SSF VOR and hold.

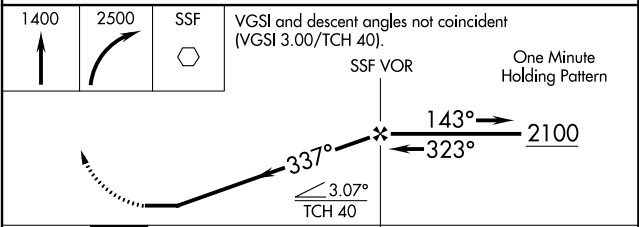
ATIS 128.8	SAN ANTONIO APP CON 125.7 290,225	STINSON TOWER* 118.2 (CTAF) 0 379.9	GND CON 121.7 379.9	CLNC DEL 121.7	UNICOM 122.95
----------------------	---	---	-------------------------------	--------------------------	-------------------------



ELEV 577	TDZE 571
----------	----------

REIL Rwy 9, 14, 27 and 32
MIRL Rwy 9-27 and 14-32
FAF to MAP 4.6 NM

Knots	60	90	120	150	180
Min:Sec	4:36	3:04	2:18	1:50	1:32



CATEGORY	A	B	C	D
S-32	1020-1 449 (500-1)		1020-1¼ 449 (500-1¼)	NA
CIRCLING	1040-1 463 (500-1)	1100-1 523 (600-1)	1100-1½ 523 (600-1½)	NA