

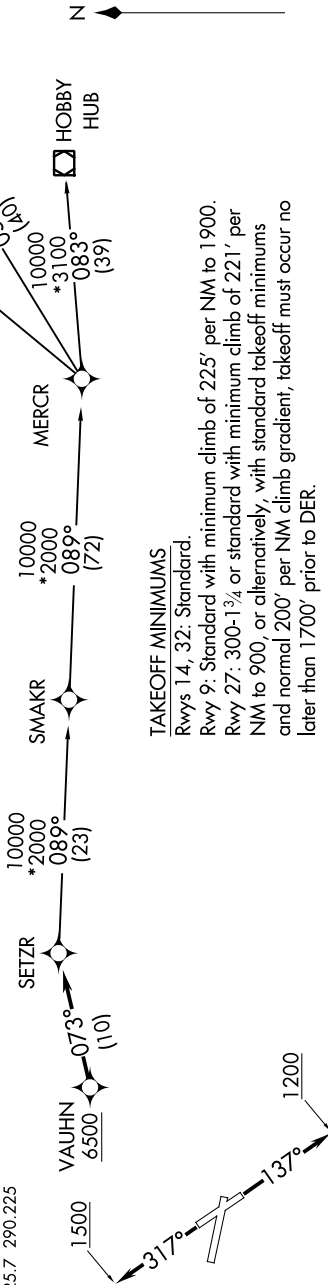
SETZR TWO DEPARTURE (RNAV)

SAN ANTONIO, TEXAS

SC-3, 01 MAR 2018 to 29 MAR 2018

ATIS 128.8
 CLINC DEL 121.7
 GND CON 121.7 379.9
 STINSON TOWER * 118.2 379.9
 REGIONAL DEP CON 125.7 290.225

NOTE: RADAR required.
 NOTE: DME/DME/IRU or GPS required.
 NOTE: For use by turbojet and turboprop aircraft only.
 NOTE: RNAV 1.



TAKEOFF MINIMUMS

Rwys 14, 32: Standard.
 Rwy 9: Standard with minimum climb of 225' per NM to 1900.
 Rwy 27: 300-1¾ or standard with minimum climb of 221' per NM to 900, or alternatively, with standard takeoff minimums and normal 200' per NM climb gradient, takeoff must occur no later than 1700' prior to DER.

NOTE: Chart not to scale

DEPARTURE ROUTE DESCRIPTION

TAKEOFF RWY 9: Climb on assigned heading for RADAR vectors to VAUHN, thence. . . .
 TAKEOFF RWY 14: Climb heading 137° to 1200, then on assigned heading for RADAR vectors to VAUHN, thence. . . .
 TAKEOFF RWY 27: Climb on assigned heading for RADAR vectors to VAUHN, thence. . . .
 TAKEOFF RWY 32: Climb heading 317° to 1500, then on assigned heading for RADAR vectors to VAUHN, thence. . . .

. . . on track 073° to SETZR, then on (transition) maintain 6500 or as assigned by ATC. Expect filed altitude 10 minutes after departure.

- HOBBO TRANSITION (SETZR2.HUB)
- HUMBLE TRANSITION (SETZR2.IAH)
- SMAKR TRANSITION (SETZR2.SMAKR)
- WYLSN TRANSITION (SETZR2.WYLSN)

SETZR TWO DEPARTURE (RNAV)

(SETZR2.SETZR) 02MAR17

SAN ANTONIO, TEXAS
STINSON MUNI (SSF)

SC-3, 01 MAR 2018 to 29 MAR 2018