

RNAV (GPS) RWY 32

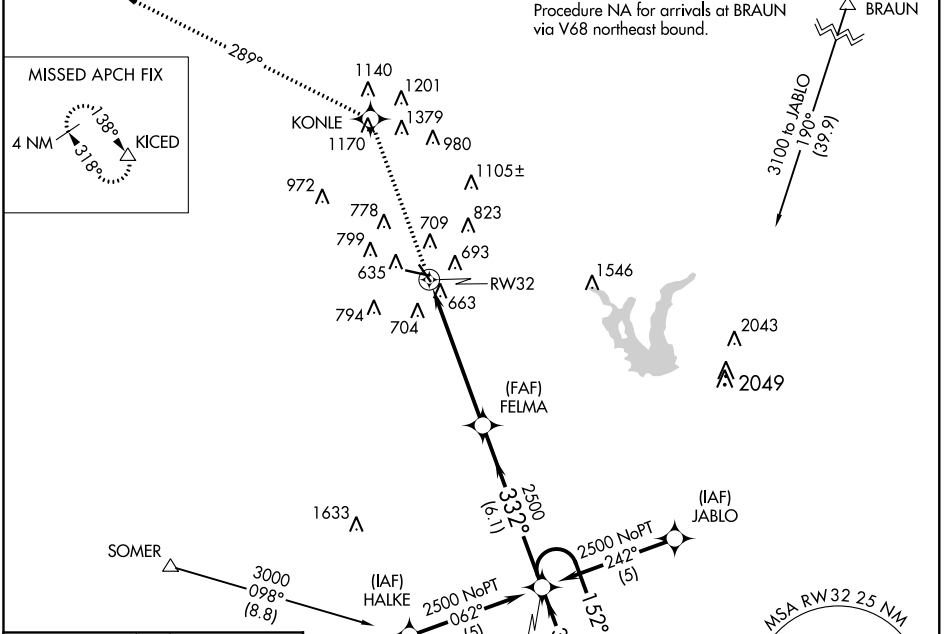
STINSON MUNI (SSF)

APP CRS 332°	Rwy Idg TDZE Apt Elev	3756 571 577
------------------------	-----------------------------	---

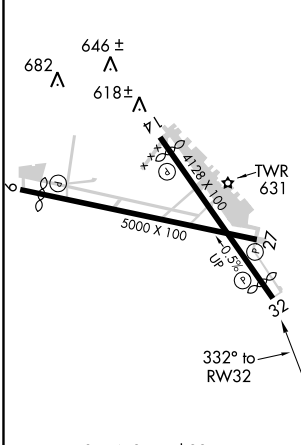
▼ When local altimeter setting not received, use San Antonio Intl altimeter setting and increase all MDAs 60 feet, and LNAV Cat C visibility ¼ mile.
▲ Helicopter visibility reduction below 1 SM NA. DME/DME RNP-0.3 NA.
 Night landing: Rwy 9, 14, 32 NA.

MISSED APPROACH: Climb to 4100 direct KONLE and via 289° track to KICED and hold.

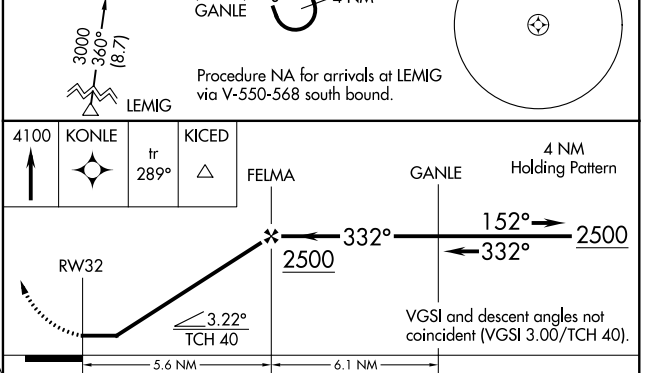
ATIS 128.8	SAN ANTONIO APP CON 125.7 290.225	STINSON TOWER ★ 118.2 (CTAF) 0 379.9	GND CON 121.7 379.9	CLNC DEL 121.7	UNICOM 122.95
----------------------	---	--	-------------------------------	--------------------------	-------------------------



ELEV 577	TDZE 571
----------	----------



REIL Rwy 9, 14, 27 and 32
 MIRL Rwy 9-27 and 14-32



CATEGORY	A	B	C	D
LNAV MDA	1020-1 449 (500-1)		1020-1¼ 449 (500-1¼)	NA
CIRCLING	1040-1 463 (500-1)	1100-1 523 (600-1)	1100-1½ 523 (600-1½)	NA

SC-3, 01 MAR 2018 to 29 MAR 2018

SC-3, 01 MAR 2018 to 29 MAR 2018