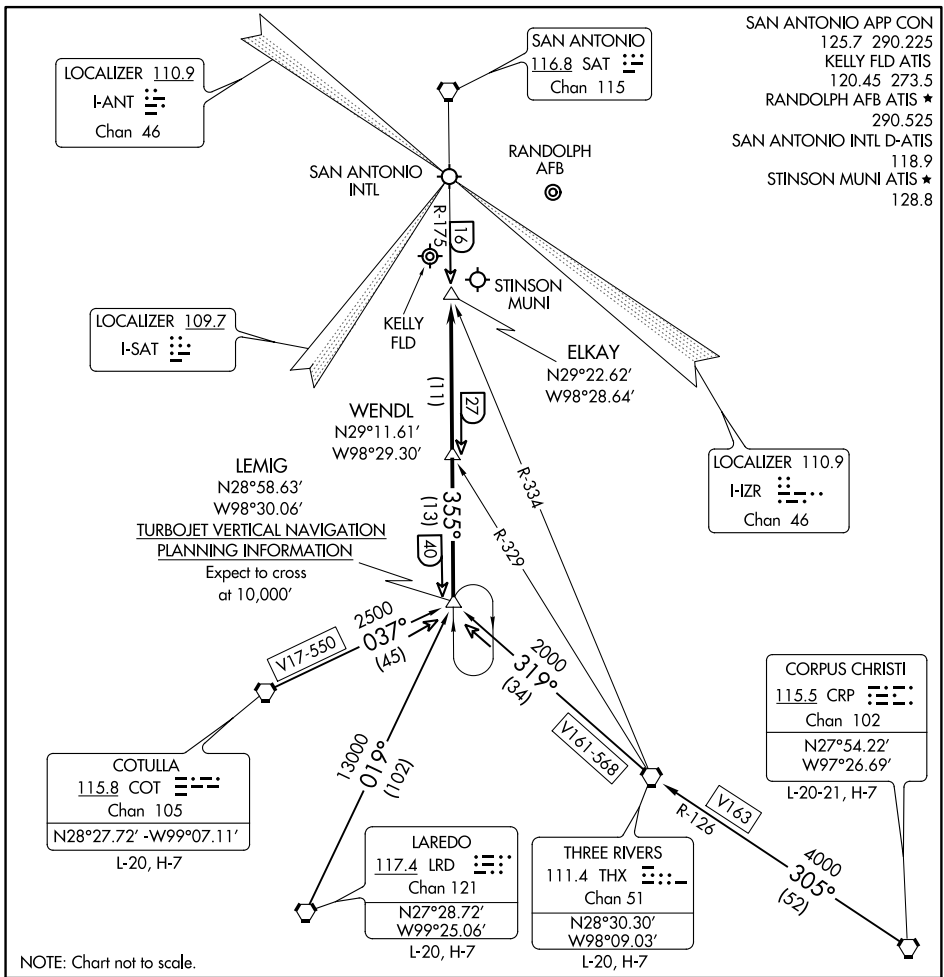


# LEMIG ONE ARRIVAL

SAN ANTONIO, TEXAS



SC-3, 01 MAR 2018 to 29 MAR 2018

SC-3, 01 MAR 2018 to 29 MAR 2018

## ARRIVAL ROUTE DESCRIPTION

**CORPUS CHRISTI TRANSITION (CRP.LEMIG1):** From over CRP VORTAC via CRP R-305 and THX R-126 to THX VORTAC, then via THX R-319 to LEMIG INT. Thence . . .

**COTULLA TRANSITION (COT.LEMIG1):** From over COT VORTAC via COT R-037 to LEMIG INT. Thence . . .

**LAREDO TRANSITION (LRD.LEMIG1):** From over LRD VORTAC via LRD R-019 to LEMIG INT. Thence . . .

**THREE RIVERS TRANSITION (THX.LEMIG1):** From over THX VORTAC via THX R-319 to LEMIG INT. Thence . . .

. . . **ALL AIRPORTS:** From over LEMIG INT via SAT R-175 to ELKAY INT. Expect radar vectors to final approach course.

# LEMIG ONE ARRIVAL

SAN ANTONIO, TEXAS