

APP CRS 111°	Rwy Idg 3212
	TDZE 280
	Apt Elev 280

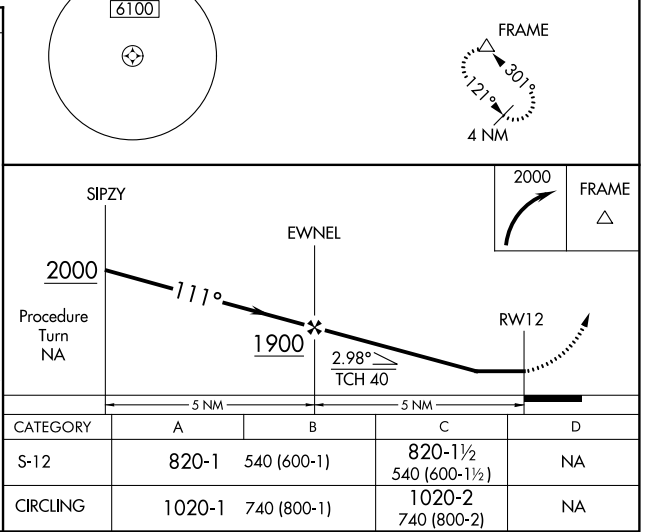
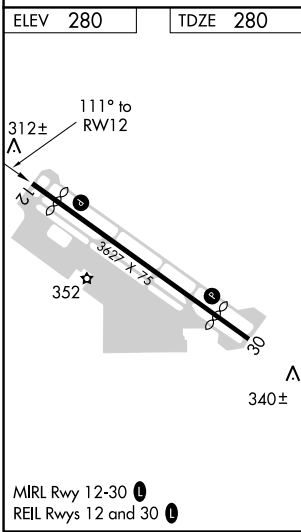
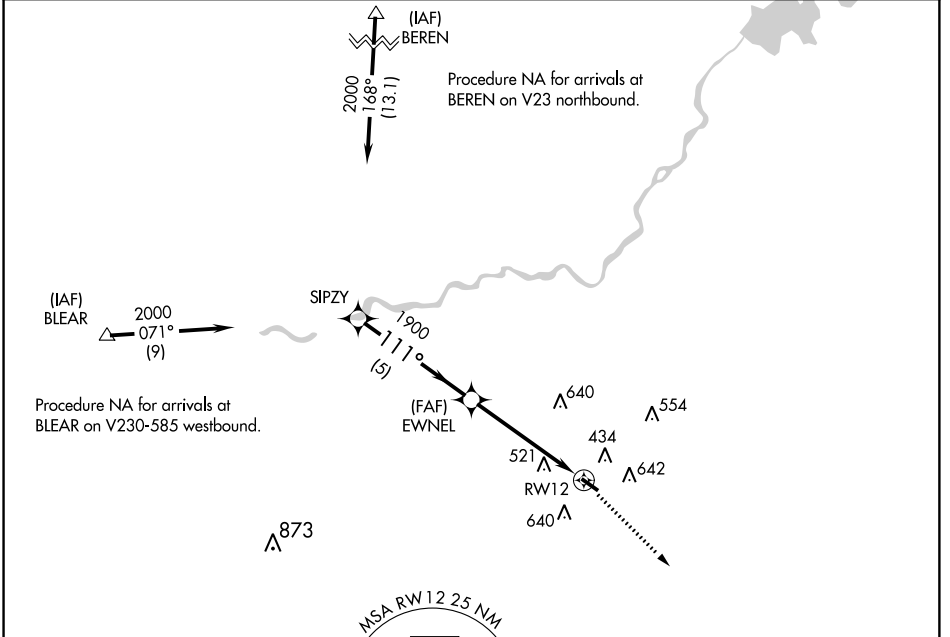
GPS RWY 12

FRESNO CHANDLER EXECUTIVE (FCH)

NA If local altimeter setting not received, use Fresno Yosemite Init altimeter setting and increase all MDAs 20 feet. Helicopter visibility reduction below 3/4 SM NA.

MISSED APPROACH: Climbing right turn to 2000 direct FRAME WP and hold.

AWOS-3 135.225	FRESNO APP CON 119.0 323.25	UNICOM 123.0 (CTAF) 0
--------------------------	---------------------------------------	---------------------------------



SW-2, 01 MAR 2018 to 29 MAR 2018

SW-2, 01 MAR 2018 to 29 MAR 2018