

VORTAC GNV <b>116.2</b> Chan <b>109</b>	APP CRS <b>211°</b>	Rwy Idg <b>6669</b> TDZE <b>71</b> Apt Elev <b>76</b>
---	------------------------	---

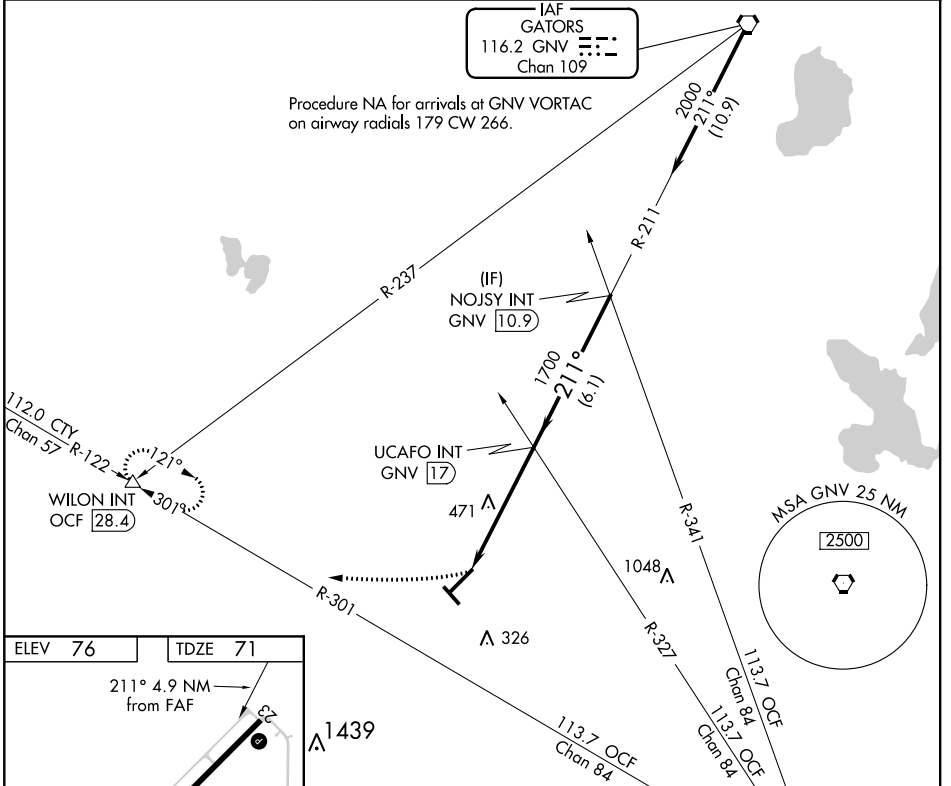
# VOR RWY 23

WILLISTON MUNI (X60)

**NA** When local altimeter setting not received, use Ocala altimeter setting and increase all MDA 60 feet, increase S-23 Cat C and Circling Cat C visibility ¼ mile. Night Landing: Rwy 5, 14, 23 NA. Helicopter visibility reduction below 1 SM NA.

**MISSED APPROACH:** Climbing right turn to 3000 via heading 270° and OCF VORTAC R-301 to WILON Int/OCF 28.4 DME and hold.

AWOS-3T <b>118.425</b>	JACKSONVILLE APP CON <b>118.6 251.15</b>	UNICOM <b>122.975</b> (CTAF) <b>0</b>
---------------------------	---	--

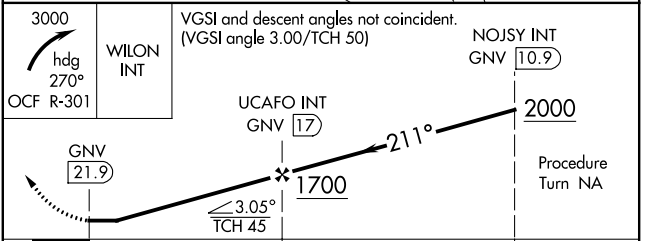


ELEV 76	TDZE 71
---------	---------

MIRL Rwy 14-32 **0**  
REIL Rwys 5 and 23 **0**  
REIL Rwy 14 and 32 **0**  
HIRL Rwy 5-23 **0**

FAF to MAP 4.9 NM

Knots	60	90	120	150	180
Min:Sec	4:54	3:16	2:27	1:58	1:38



CATEGORY	A	B	C	D
S-23	780-1 709 (800-1)	780-1¼ 709 (800-1¼)	780-2 709 (800-2)	NA
CIRCLING	780-1 704 (800-1)	780-1¼ 704 (800-1¼)	780-2 704 (800-2)	NA

SE-3: 01 FEB 2018 to 01 MAR 2018

SE-3: 01 FEB 2018 to 01 MAR 2018