

APP CRS	Rwy Idg	<b>6669</b>
<b>229°</b>	TDZE	<b>71</b>
	Apt Elev	<b>76</b>

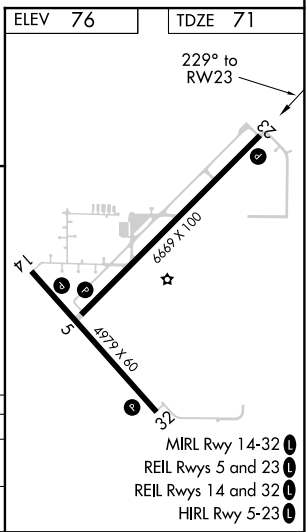
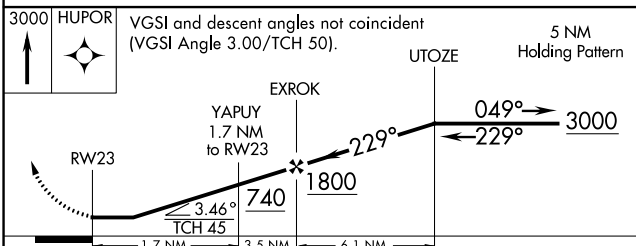
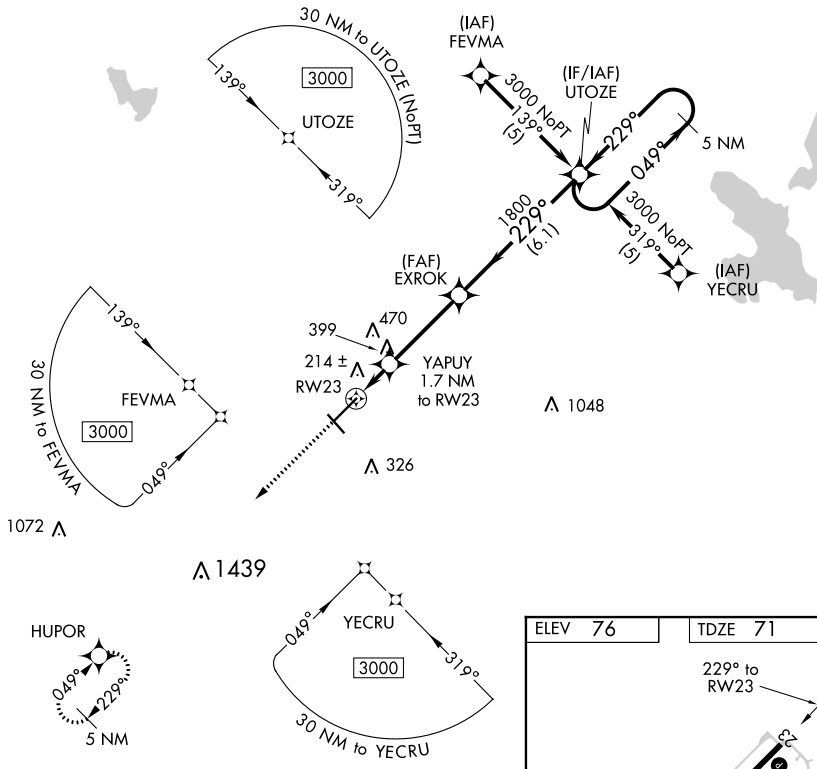
# RNAV (GPS) RWY 23

WILLISTON MUNI (X60)

**⚠** When local altimeter setting not received, use Ocala altimeter setting and increase all MDA 60 feet. DME/DME RNP-0.3 NA. Helicopter visibility reduction below 1 SM NA. Night Landing: Rwy 5, 14, 23 NA.

**⚠ NA** MISSED APPROACH: Climb to 3000 direct HUPOR and hold.

AWOS-3T <b>118.425</b>	JACKSONVILLE APP CON <b>118.6 251.15</b>	UNICOM <b>122.975 (CTAF) 0</b>
---------------------------	---	-----------------------------------



CATEGORY	A	B	C	D
LNNAV MDA	480-1	409 (500-1)	480-1¼ 409 (500-1¼)	NA
CIRCLING	520-1 444 (500-1)	540-1 464 (500-1)	540-1½ 464 (500-1½)	NA

SE-3: 01 FEB 2018 to 01 MAR 2018

SE-3: 01 FEB 2018 to 01 MAR 2018

- MIRL Rwy 14-32 1
- REIL Rwys 5 and 23 1
- REIL Rwys 14 and 32 1
- HIRL Rwy 5-23 1