

VOR/DME CIP 112.9 Chan 76	APP CRS 120°	Rwy Idg TDZE Apt Elev N/A N/A 1439
---	------------------------	--

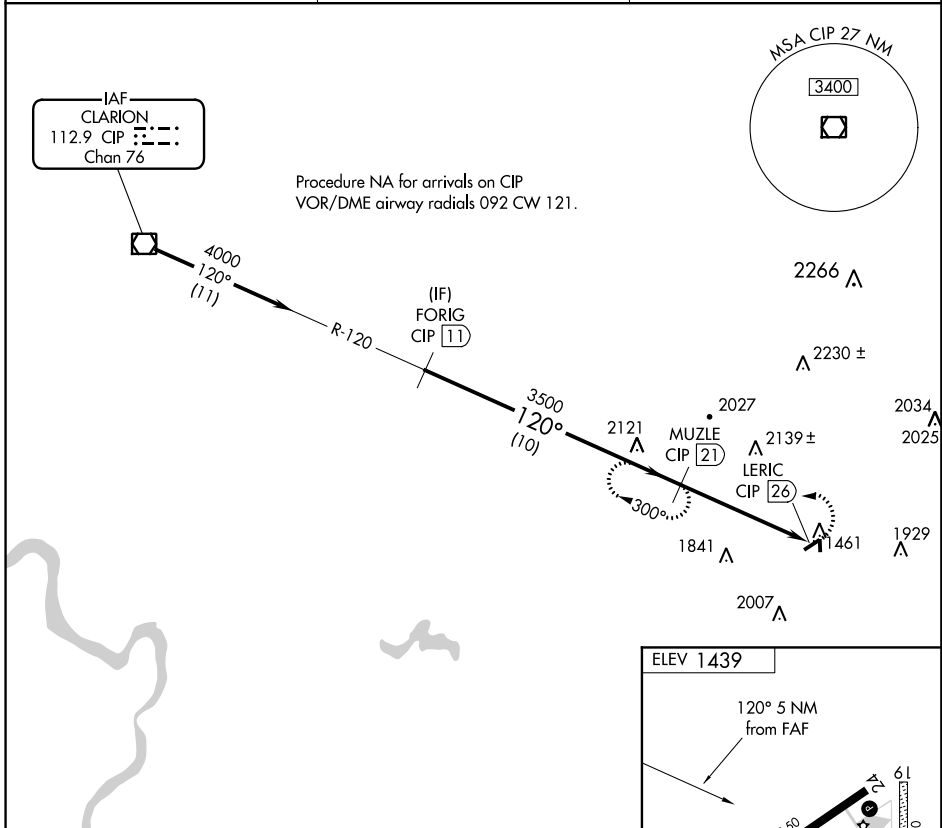
VOR/DME-A

PUNXSUTAWNEY MUNI (N35)

NA Use Indiana Co-Jimmy Stewart Fld altimeter setting.
Helicopter visibility reduction below 3/4 SM NA.

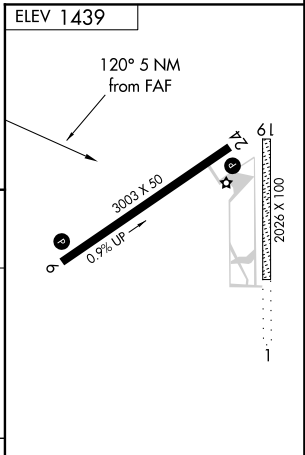
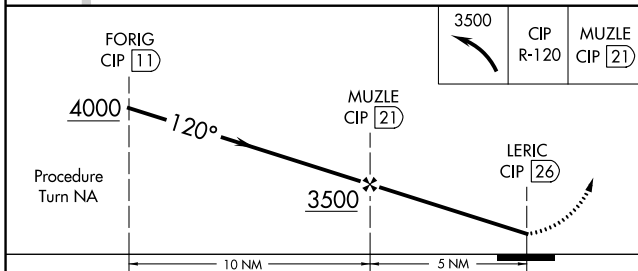
MISSED APPROACH: Climbing left turn to 3500 via CIP R-120 to MUZLE/21 DME and hold.

JIMMY STEWART FIELD AWOS-3 126.625	CLEVELAND CENTER 126.72 291.65	UNICOM 123.0 (CTAF) 0
---	--	---------------------------------



NE-4, 01 FEB 2018 to 01 MAR 2018

NE-4, 01 FEB 2018 to 01 MAR 2018



CATEGORY	A	B	C	D
CIRCLING	2460-1 1/4 1021 (1100-1 1/4)	2460-1 1/2 1021 (1100-1 1/2)	NA	

REIL Rwy 1, 6, 19, and 24 0

MIRL Rwy 1-19 and 6-24 0