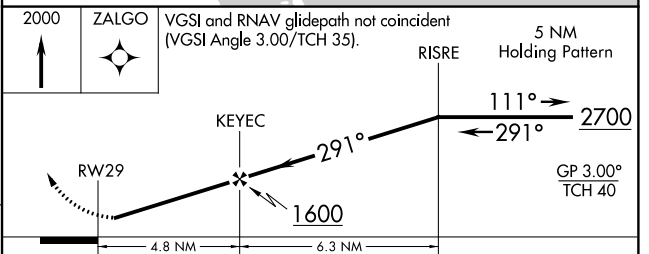
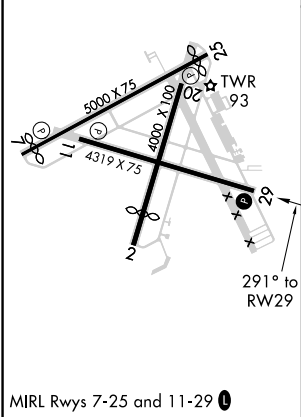
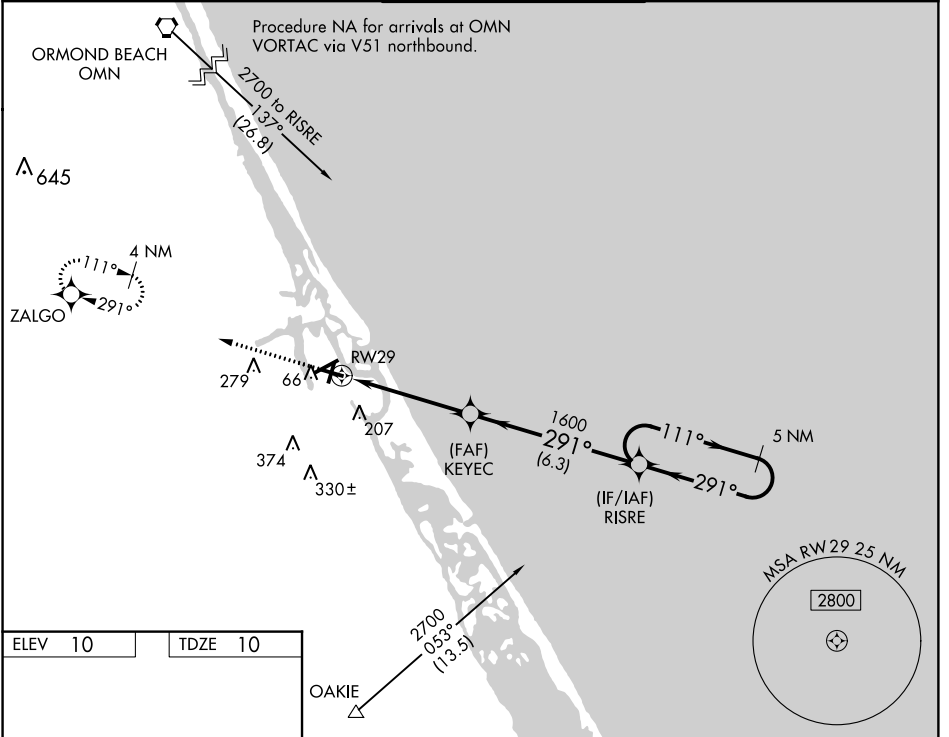


WAAS CH 97700 W29A	APP CRS 291°	Rwy Idg TDZE Apt Elev	4319 10 10
--	------------------------	-----------------------------	---------------------------------------

RNAV (GPS) RWY 29

NEW SMYRNA BEACH MUNI (EVB)

<p>NA ASR</p> <p>Use Daytona Beach Intl altimeter setting; if not received, use Orlando Sanford Intl altimeter setting and increase DA to 342 feet and all MDAs 40 feet. DME/DME RNP-0.3 NA. Night landing: Rwy 29 Cats C and D, 7, 11, 25 NA.</p>	<p>MISSED APPROACH: Climb to 2000 direct ZALGO and hold.</p>			
	<p>ATIS 124.625</p>	<p>DAYTONA APP CON 125.35 322.3</p>	<p>NEW SMYRNA TOWER★ 119.675 (CTAF) 0</p>	<p>GND CON 121.325</p>



CATEGORY	A	B	C	D
LPV DA	308-1 298 (300-1)			
LNAV MDA	380-1 370 (400-1)		380-1¼ 370 (400-1¼)	
CIRCLING	440-1 430 (500-1)	460-1 450 (500-1)	580-1½ 570 (600-1½)	620-2 610 (700-2)

SE-3: 01 FEB 2018 to 01 MAR 2018

SE-3: 01 FEB 2018 to 01 MAR 2018