

WAAS CH 45900 W02A	APP CRS 021°	Rwy Idg TDZE Apt Elev	3215 9 10
--	------------------------	-----------------------------	--------------------------------------

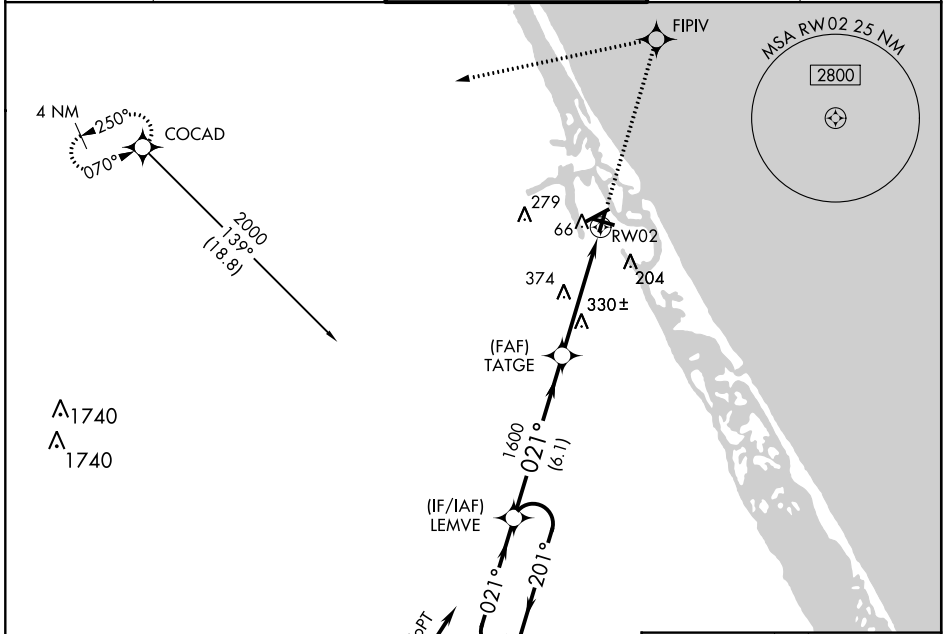
RNAV (GPS) RWY 2

NEW SMYRNA BEACH MUNI (EVB)

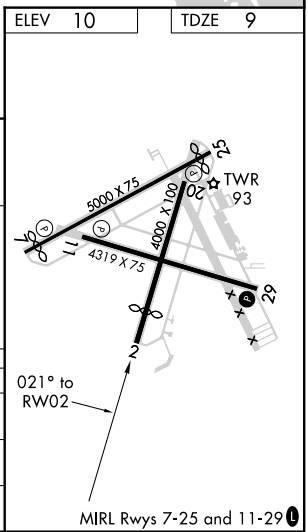
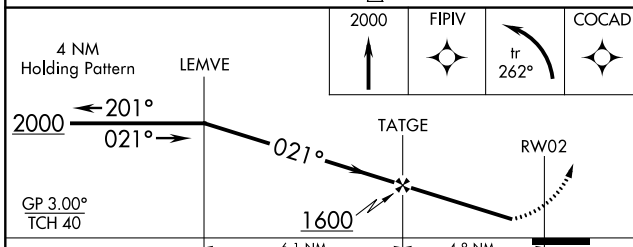
NA Use Daytona Beach Intl altimeter setting; if not received, use Orlando Sanford Intl altimeter setting and increase DA to 370 feet and all MDAs 40 feet. Night landing: Rwy 2 Cats C and D, 7, 11, 25 NA. DME/DME RNP-0.3 NA.

MISSED APPROACH: Climb to 2000 direct FIPIV and left turn via 262° track to COCAD and hold.

ATIS 124.625	DAYTONA APP CON 125.35 322.3	NEW SMYRNA TOWER ★ 119.675 (CTAF) 0	GND CON 121.325	UNICOM 122.8
------------------------	--	--	---------------------------	------------------------



Procedure NA for arrivals at OVIDO via V51 southbound and V533 southwest bound.



CATEGORY	A	B	C	D
LPV DA		336-1¼	327 (400-1¼)	
LNAV MDA	700-1	691 (700-1)	700-2 691 (700-2)	700-2¼ 691 (700-2¼)
CIRCLING	700-1¼	690 (700-1¼)	700-2 690 (700-2)	700-2¼ 690 (700-2¼)

SE-3: 01 FEB 2018 to 01 MAR 2018

SE-3: 01 FEB 2018 to 01 MAR 2018