

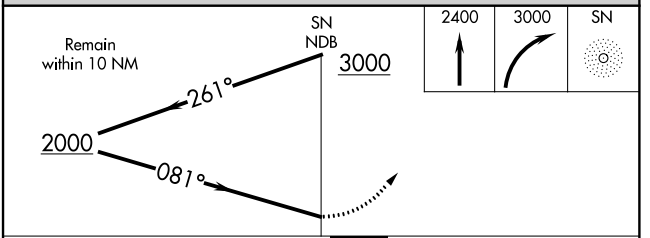
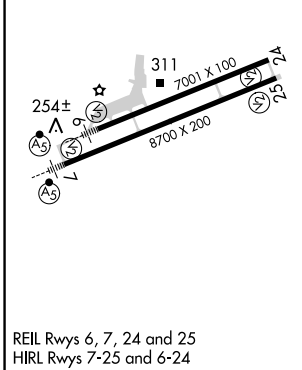
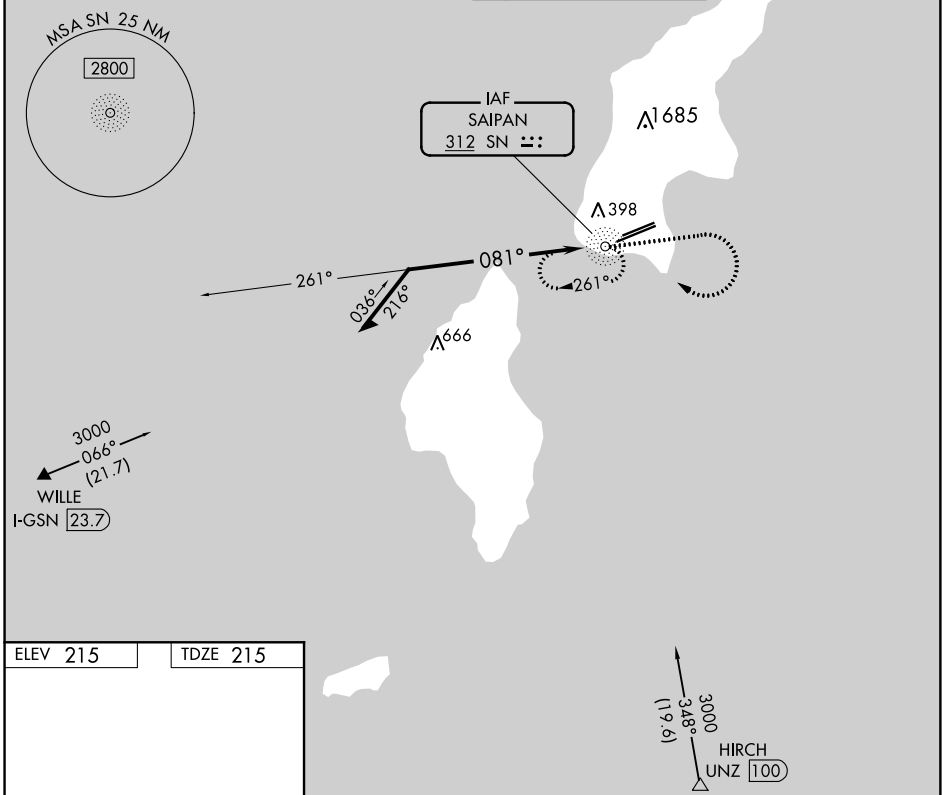
NDB SN	APP CRS	Rwy Idg	<b>8700</b>
<b>312</b>	<b>081°</b>	TDZE	<b>215</b>
		Apt Elev	<b>215</b>

# NDB Y RWY 7

FRANCISCO C ADA/SAIPAN INTL (GSN)(PGSN)

	Circling NA north of Rwy 6-24.	MALSR 	MISSED APPROACH: Climb to 2400 then climbing right turn to 3000 direct SN NDB and hold.

ATIS <b>127.2</b>	GUAM APP CON <b>118.4 290.5</b>	SAIPAN TOWER <b>125.7 256.9</b>	GND CON <b>121.8</b>
----------------------	------------------------------------	------------------------------------	-------------------------



CATEGORY	A	B	C	D
S-7	900-3/4	685 (700-3/4)	900-1 1/2	685 (700-1 1/2)
<input checked="" type="checkbox"/> CIRCLING	900-1	685 (700-1)	900-2 685 (700-2)	900-2 1/4 685 (700-2 1/4)

PAC, 01 FEB 2018 to 29 MAR 2018

PAC, 01 FEB 2018 to 29 MAR 2018