

NDB SN 312	APP CRS 246°	Rwy ldg TDZE Apt Elev	8700 210 215
----------------------	------------------------	-----------------------------	---

NDB RWY 25

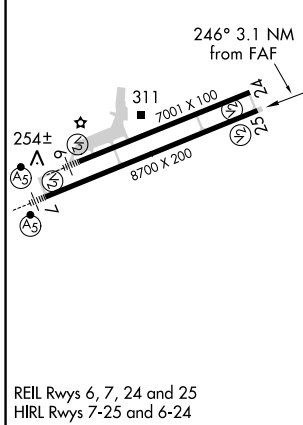
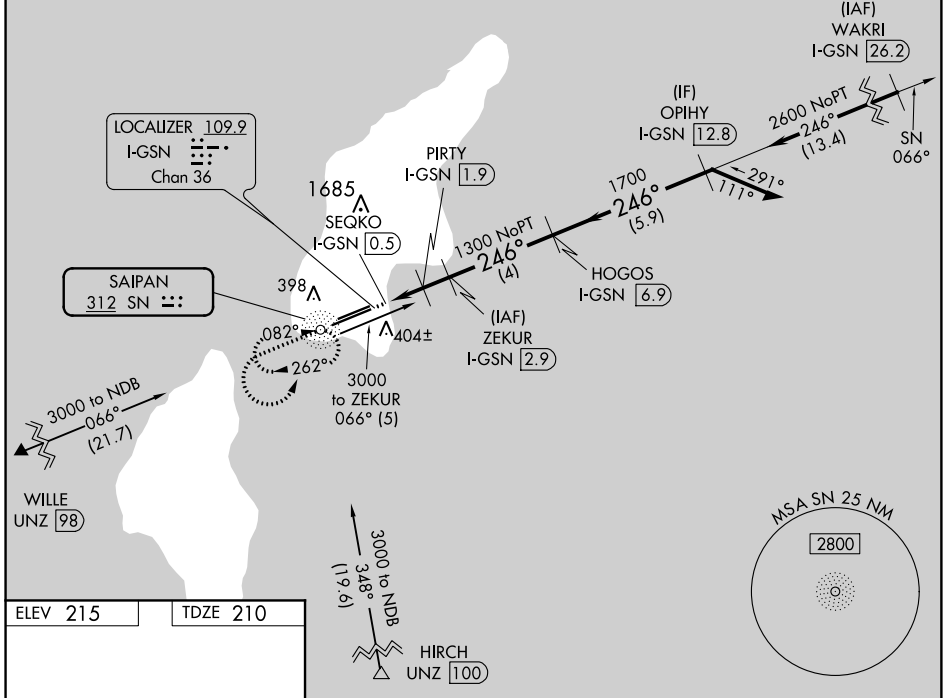
FRANCISCO C ADA/SAIPAN INTL (GSN)(PGSN)

▼ Circling NA north of Rwy 6-24.
Rwy 25 helicopter visibility reduction below 3/4 SM NA.
DME required.

MISSED APPROACH: Climb to 2000 then climbing left turn to 2800 direct SN NDB and hold.

ATIS 127.2	GUAM APP CON 118.4 290.5	SAIPAN TOWER 125.7 256.9	GND CON 121.8
----------------------	------------------------------------	------------------------------------	-------------------------

DME REQUIRED



ELEV 215	TDZE 210				
2000	2800	SN	ZEKUR I-GSN 2.9	3000	Remain within 10 NM
SEQKO I-GSN 0.5	PIRTY I-GSN 1.9	HOGOS I-GSN 6.9	OPIHY I-GSN 12.8	066°	246° - 2600
980	1300	1700	2600	246°	2600
0.6	1.4 NM	1 NM	4 NM	5.9 NM	
CATEGORY	A	B	C	D	
S-25	720-1	510 (600-1)	720-1 3/8	510 (600-1 3/8)	
☐ CIRCLING	720-1	505 (600-1)	720-1 1/2	505 (600-1 1/2)	780-2 565 (600-2)