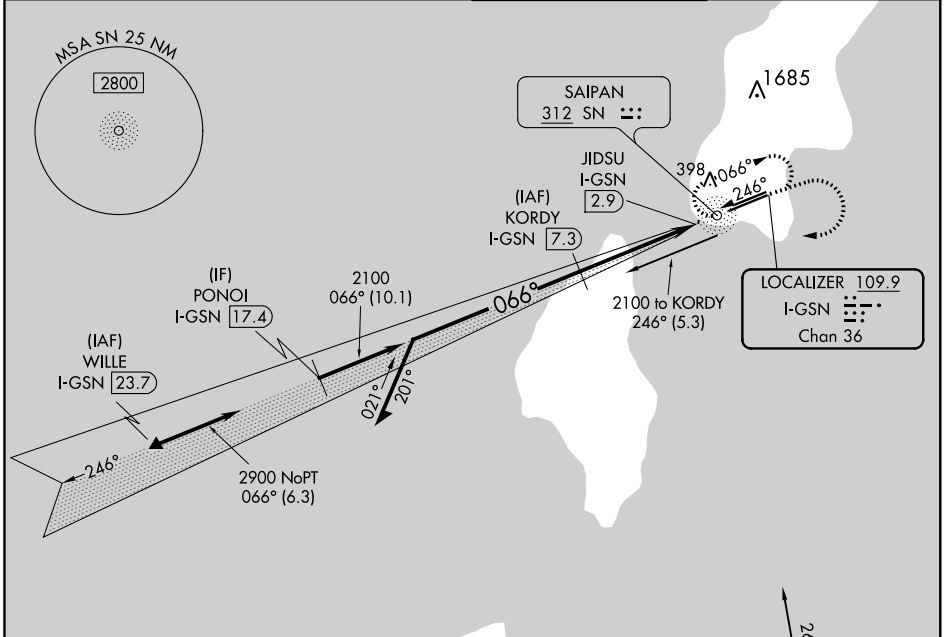


LOC/DME I-GSN 109.9 Chan 36	APP CRS 066°	Rwy Idg 8700 TDZE 215 Apt Elev 215
---	------------------------	---

ILS or LOC RWY 7
FRANCISCO C ADA/SAIPAN INTL (GSN)(PGSN)

NA Circling NA north of Rwy 6-24. ADF and DME required.	MALS 	MISSED APPROACH: Climb to 1600 then climbing right turn to 2800 direct SN NDB and hold.

ATIS 127.2	GUAM APP CON 118.4 290.5	SAIPAN TOWER 125.7 256.9	GND CON 121.8
----------------------	------------------------------------	------------------------------------	-------------------------

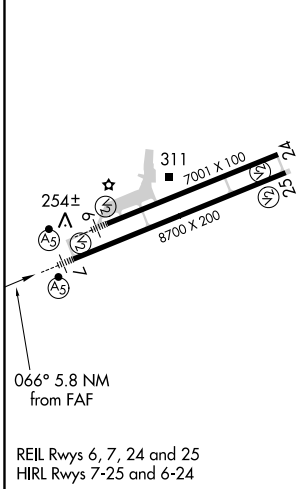


PAC, 01 FEB 2018 to 29 MAR 2018

PAC, 01 FEB 2018 to 29 MAR 2018

ELEV 215	TDZE 215
----------	----------

DME REQUIRED



Remain within 10 NM KORDY I-GSN [7.3] 2100 2100 2100 GS 3.00° TCH 55	246° 066° 2100 2100 4.5 NM 0.6 0.7	1600 ↑	2800 ↘	SN
		JIDSU I-GSN [2.9]	* I-GSN [1.6]	* I-GSN [2.3]
CATEGORY	A	B	C	D
S-ILS 7	415-1/2 200 (200-1/2)			
S-LOC 7	480-1/2 265 (300-1/2)			
CIRCLING	720-1 505 (600-1)	720-1 1/2 505 (600-1 1/2)	780-2	565 (600-2)