

SHERIDAN, INDIANA

AL-6252 (FAA)

17229

VORTAC OKK 113.5 Chan 82	APP CRS 204°	Rwy Idg TDZE Apt Elev	N/A N/A 936
--	------------------------	-----------------------------	--

VOR-A
SHERIDAN (5I4)

NA Procedure NA at night except by prior arrangement for runway lights. DME required. Use Indianapolis Intl altimeter setting.

MISSED APPROACH: Climbing right turn to 2500 on OKK VORTAC R-204 to SOUSE/17 DME and hold.

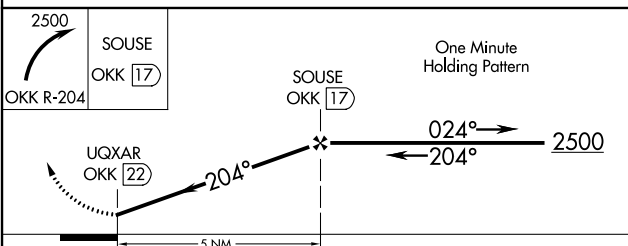
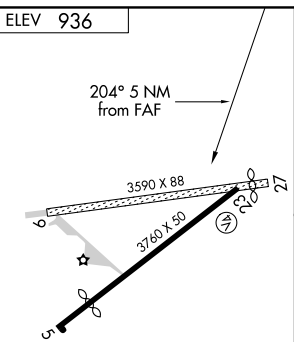
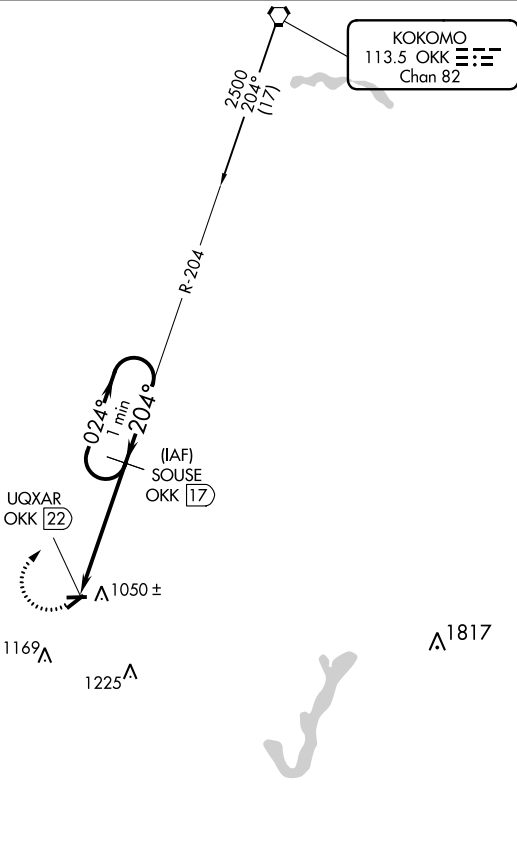
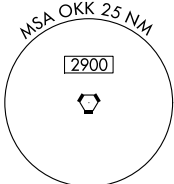
INDIANAPOLIS ASOS
134.25

INDIANAPOLIS APP CON
124.65 317.8

UNICOM
123.075 (CTAF)

DME REQUIRED

KOKOMO
113.5 OKK
Chan 82



CATEGORY	A	B	C	D
	1460-1 524 (600-1)	1480-1 544 (600-1)	1480-1½ 544 (600-1½)	NA

SHERIDAN, INDIANA
Amdt 6A 17AUG17

40°11'N-86°13'W

SHERIDAN (5I4)
VOR-A

EC-2: 01 FEB 2018 to 01 MAR 2018

EC-2: 01 FEB 2018 to 01 MAR 2018