

WAAS CH 48905 W29A	APP CRS 291°	Rwy Idg TDZE Apt Elev	4000 1004 1004
--	------------------------	-----------------------------	---

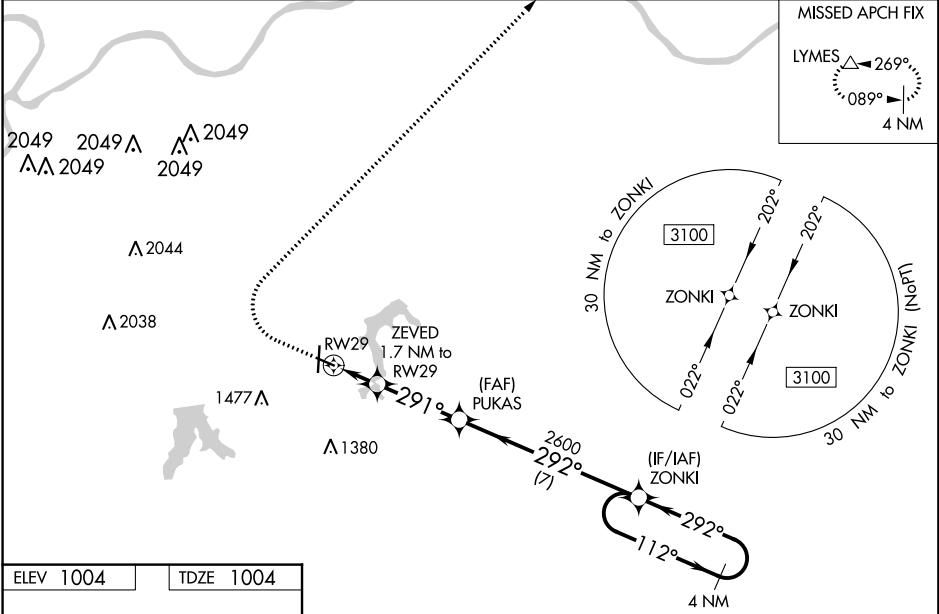
RNAV (GPS) RWY 29

LEE'S SUMMIT MUNI (LXT)

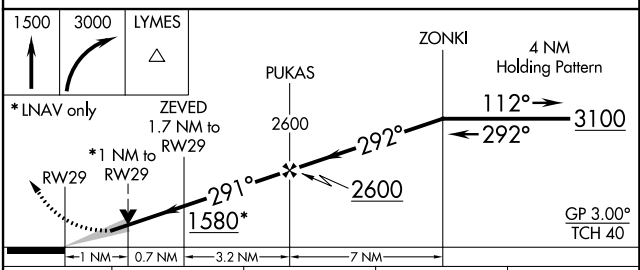
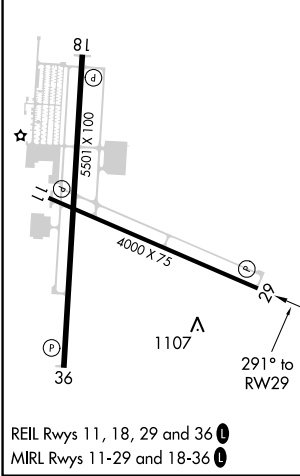
⚠ For uncompensated Baro-VNAV systems, LNAV/VNAV NA below -17°C (2°F) or above 54°C (130°F). DME/DME RNP-0.3 NA. VDP and Baro-VNAV NA when using Charles B. Wheeler Downtown altimeter setting. When local altimeter setting not received, use Charles B. Wheeler Downtown altimeter setting: increase LPV DA to 1322 feet and all visibilities $\frac{1}{8}$ SM; increase LNAV/VNAV DA to 1359 feet and all visibilities $\frac{1}{8}$ SM; increase all MDA 80 feet and visibility Cats C and D $\frac{1}{4}$ SM.

MISSED APPROACH: Climb to 1500 then climbing right turn to 3000 direct LYMES and hold.

ASOS 124,175	KANSAS CITY APP CON 118.4 294.7	CLNC DEL 118.45	UNICOM 122.8 (CTAF) 0
------------------------	---	---------------------------	--



ELEV 1004	TDZE 1004
-----------	-----------



CATEGORY	A	B	C	D
LPV DA		1254- $\frac{3}{4}$	250 (300- $\frac{3}{4}$)	
LNAV/VNAV DA		1291- $\frac{7}{8}$	287 (300- $\frac{7}{8}$)	
LNAV MDA		1360-1	356 (400-1)	
CIRCLING	1440-1 436 (500-1)	1540-1 536 (600-1)	1780-2 $\frac{1}{4}$ 776 (800-2 $\frac{1}{4}$)	1780-2 $\frac{1}{2}$ 776 (800-2 $\frac{1}{2}$)

NC-3, 01 FEB 2018 to 01 MAR 2018

NC-3, 01 FEB 2018 to 01 MAR 2018