

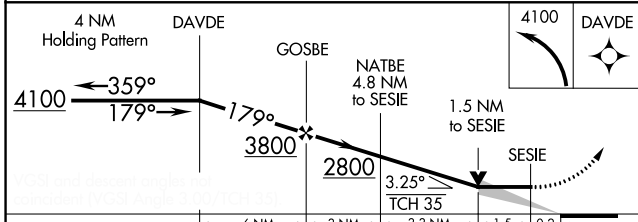
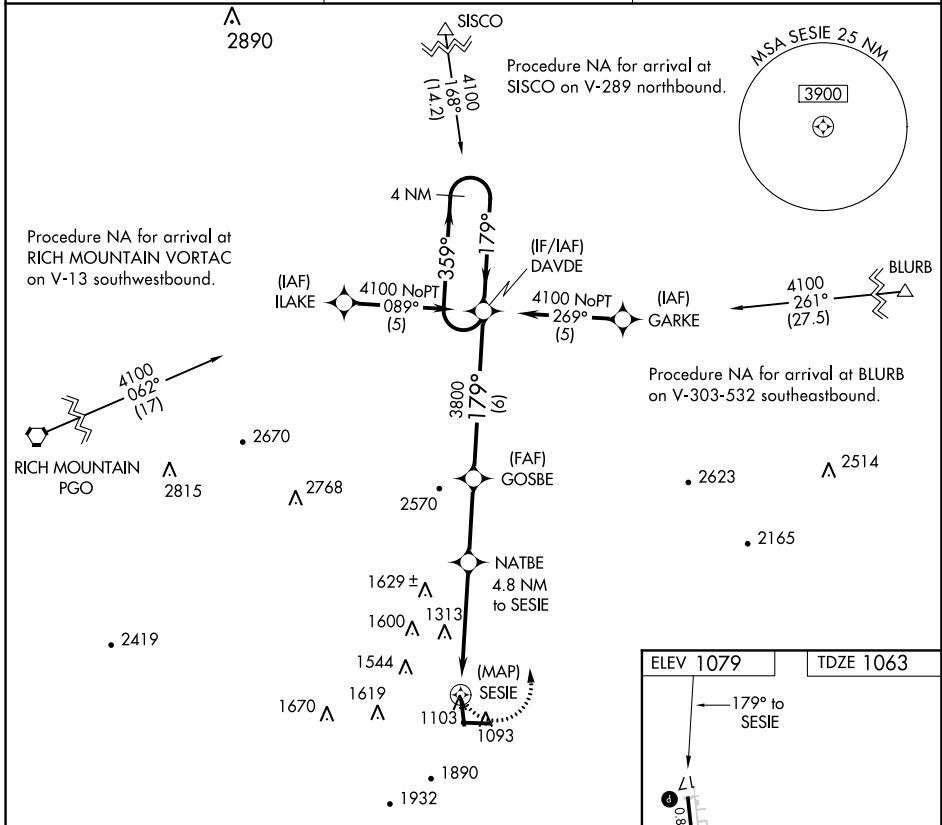
# RNAV (GPS) RWY 17

MENA INTERMOUNTAIN MUNI (ME/Z)

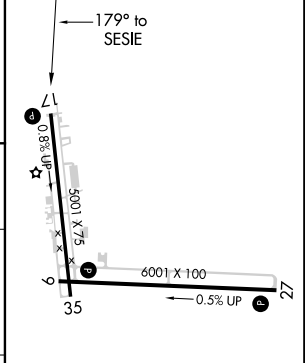
APP CRS <b>179°</b>	Rwy Idg <b>5001</b>
	TDZE <b>1063</b>
	Apt Elev <b>1079</b>

GPS or RNP-0.3 Required. DME/DME RNP-0.3 NA.	MISSED APPROACH: Climbing left turn to 4100 direct DAVDE WP and hold.	
---	---	--

AWOS-3 <b>118.025</b>	MEMPHIS CENTER <b>126.1 269.0</b>	UNICOM <b>122.8 (CTAF)</b>
--------------------------	--------------------------------------	-------------------------------



ELEV 1079	TDZE 1063
-----------	-----------



CATEGORY	A	B	C	D
RNAV MDA	1640-1	577 (600-1)	1640-1½ 577 (600-1½)	NA
CIRCLING	1840-1 761 (800-1)	1880-1¼ 801 (900-1¼)	2000-2¾ 921 (1000-2¾)	NA

MIRL Rwy 9-27 and 17-35

REIL Rwy 9, 27 and 35

# RNAV (GPS) RWY 17

SC-1, 01 FEB 2018 to 01 MAR 2018

SC-1, 01 FEB 2018 to 01 MAR 2018