

WAAS CH 58236 W10A	APP CRS 102°	Rwy Idg 5350 TDZE 28 Apt Elev 28
--	------------------------	---

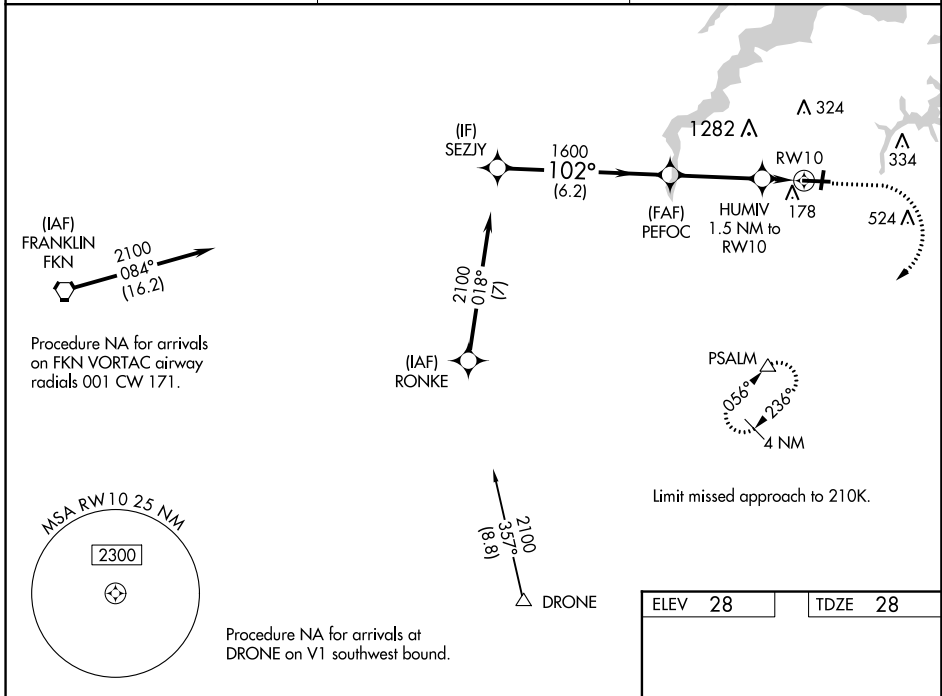
RNAV (GPS) RWY 10

HAMPTON ROADS EXECUTIVE (PVG)

⚠ Baro-VNAV NA when using Norfolk Intl altimeter setting. For uncompensated Baro-VNAV systems, LNAV/VNAV NA below -15°C (5°F) or above 54°C (130°F).
⚠ DME/DME RNP-0.3 NA. When local altimeter setting not received, use Norfolk Intl altimeter setting and increase all DA 33 feet and all MDA 40 feet; increase LNAV/VNAV all Cats visibility and LNAV Cat C visibility 1/8 mile. Circling NA for Cat C N of Rwy 10-28. Circling NA to Rwy 2 and 20. Helicopter visibility reduction below 1 SM NA.

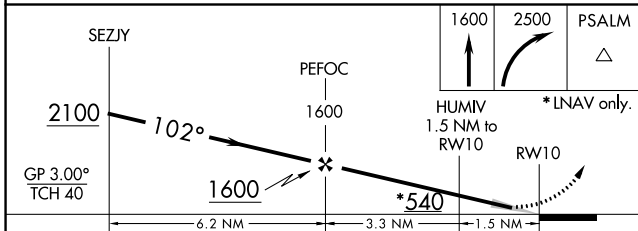
MISSED APPROACH: Climb to 1600 then climbing right turn to 2500 direct PSALM and hold.

AWOS-3PT 118.375	NORFOLK APP CON 118.9 353.7	UNICOM 122.725 (CTAF) 0
----------------------------	---------------------------------------	-----------------------------------

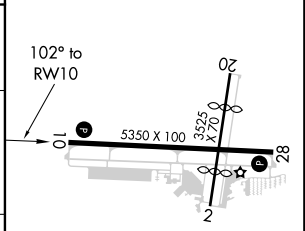


NE-3, 01 FEB 2018 to 01 MAR 2018

NE-3, 01 FEB 2018 to 01 MAR 2018



ELEV 28	TDZE 28
----------------	----------------



CATEGORY	A	B	C	D
LPV DA	228-1	200 (200-1)		NA
LNAV/VNAV DA	432-1 ³ / ₈	404 (500-1 ³ / ₈)		NA
LNAV MDA	420-1	392 (400-1)	420-1 ¹ / ₈ 392 (400-1 ¹ / ₈)	NA
CIRCLING	500-1	472 (500-1)	780-2 ¹ / ₄ 752 (800-2 ¹ / ₄)	NA

HIRL Rwy 10-28 **0**
 REIL Rwy 10 and 28 **0**
 MIRL Rwy 2-20 **0**