

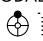
WAAS CH <b>61234</b> <b>W23A</b>	APP CRS <b>232°</b>	Rwy Idg TDZE <b>1523</b> Apt Elev <b>1545</b>	<b>5506</b>
--	------------------------	---	-------------

# RNAV (GPS) RWY 23

SCOTT MUNI (SCX)

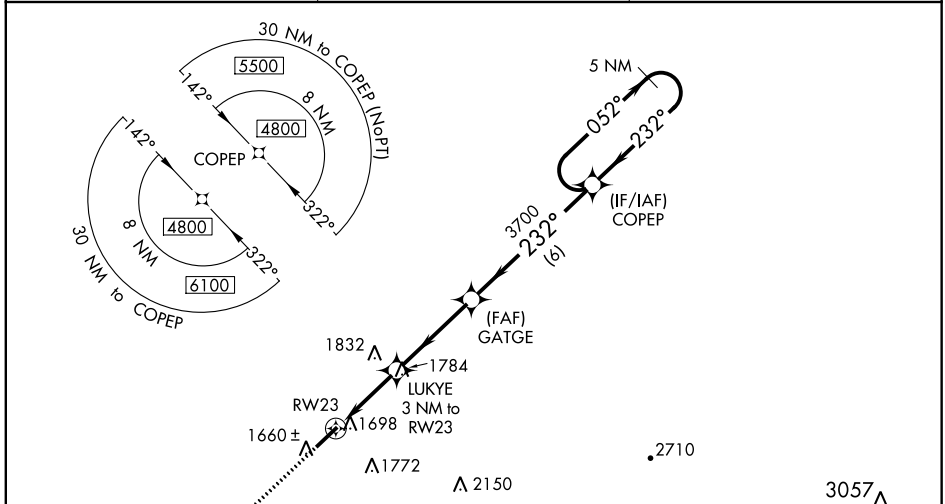
**▼**  
**▲NA**

Night landing: Rwy 5 NA. For uncompensated Baro-VNAV systems, LNAV/VNAV NA below -18°C (0°F) or above 54°C (130°F). DME/DME RNP-0.3 NA. When local altimeter setting not received, use Monticello altimeter setting: increase LPV all Cats DA to 2005 feet, LNAV/VNAV all Cats DA to 2153 feet, LPV visibility ½ mile, LNAV/VNAV ⅝ mile; increase all MDA 240 feet and LNAV Cat C/D visibility ⅝ mile, Circling Cat B ¼ mile, Circling Cat C 1 mile and Circling Cat D ¾ mile. Inop table does not apply to LPV and LNAV all Cats. For inop ODALS, increase LNAV/VNAV Cat D visibility to 1⅜ mile. For inop ODALS when using Monticello altimeter setting, increase LPV all Cats visibility to 1⅝ mile, LNAV/VNAV all Cats to 2½ mile. When using Monticello altimeter setting, inop table does not apply to LNAV Cats A/C/D. VDP and Baro-VNAV NA when using Monticello altimeter setting.

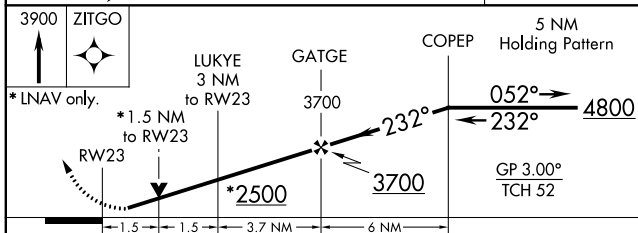
**ODALS** 

**MISSED APPROACH:**  
Climb to 3900 direct ZITGO and hold.

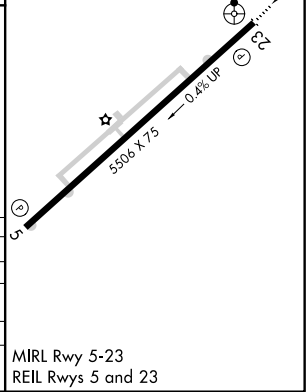
AWOS-3 <b>135.025</b>	INDIANAPOLIS CENTER <b>124.625 371.925</b>	UNICOM <b>122.8 (CTAF)</b>
--------------------------	---	-------------------------------



<b>3900</b>	<b>ZITGO</b>	<b>ELEV 1545</b>	<b>TDZE 1523</b>
-------------	--------------	------------------	------------------



CATEGORY	A	B	C	D
LPV DA	1773-1		250 (300-1)	
LNAV/DA VNAV	1921-1½		398 (400-1½)	
LNAV MDA	2040-1	517 (500-1)	2040-1⅜	517 (500-1½)
<b>CIRCLING</b>	2040-1	495 (500-1)	2200-1¾	2260-2¼
			655 (700-1¾)	715 (800-2¼)



SE-1, 01 FEB 2018 to 01 MAR 2018

SE-1, 01 FEB 2018 to 01 MAR 2018