

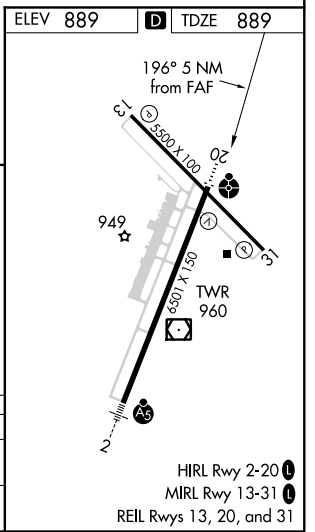
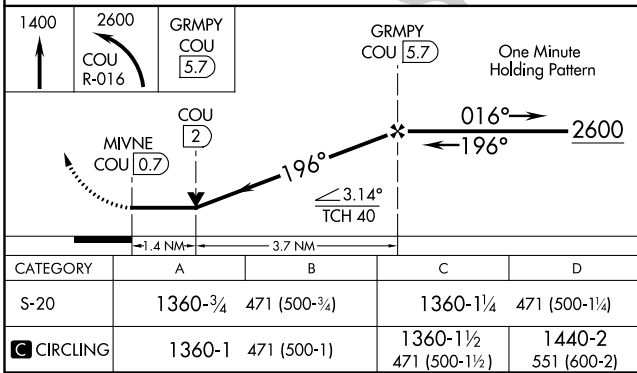
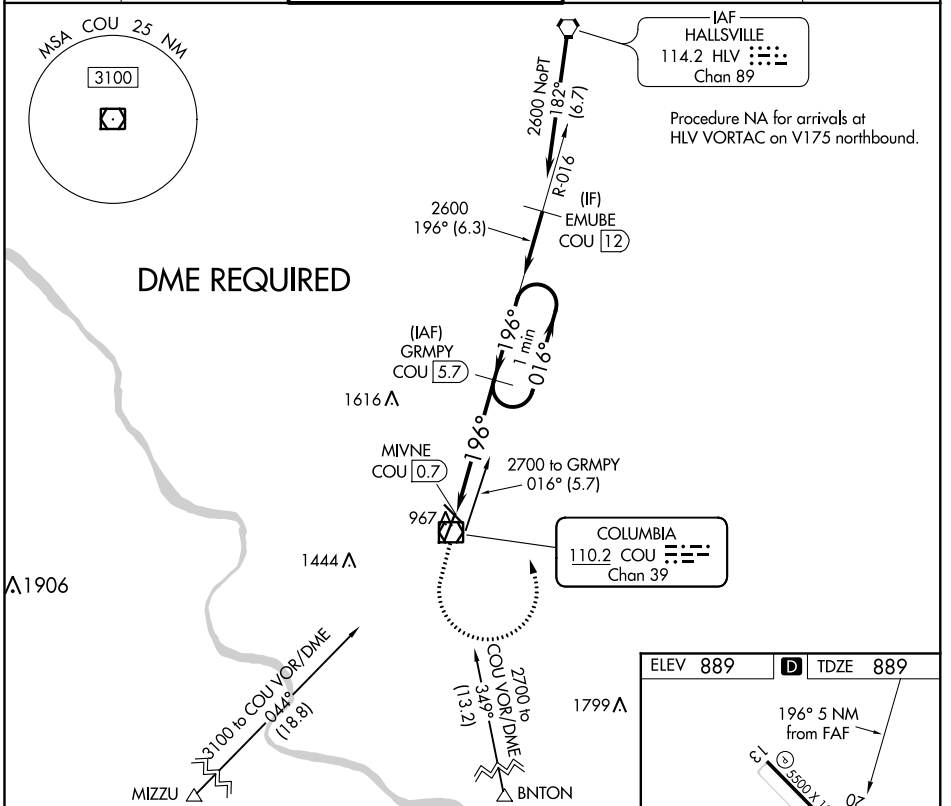
VOR/DME COU 110.2 Chan 39	APP CRS 196°	Rwy Idg TDZE 889 Apt Elev 889
---	------------------------	---

VOR Y RWY 20

COLUMBIA RGNL (COU)

Circling NA for Cat D west of Rwy 2 and 13. DME required.	ODALS ⋮ ⊕	MISSED APPROACH: Climb to 1400 then climbing left turn to 2600 on COU VOR/DME R-016 to GRMPY/COU 5.7 DME and hold.
--	-----------------	--

ATIS 128.45	MIZZU APP CON 124.375 353.7	COLUMBIA TOWER* 119.3 (CTAF) 0 363.25	COLUMBIA RADIO 121.5 243.0 255.4	GND CON 121.6
-----------------------	---------------------------------------	---	--	-------------------------



NC-3: 01 FEB 2018 to 01 MAR 2018

NC-3: 01 FEB 2018 to 01 MAR 2018

HIRL Rwy 2-20
MIRL Rwy 13-31
REIL Rwy 13, 20, and 31