

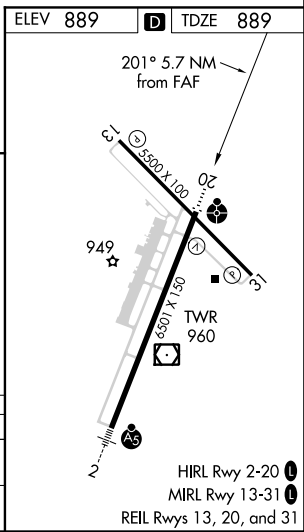
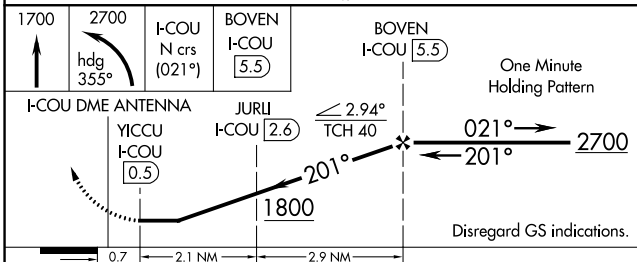
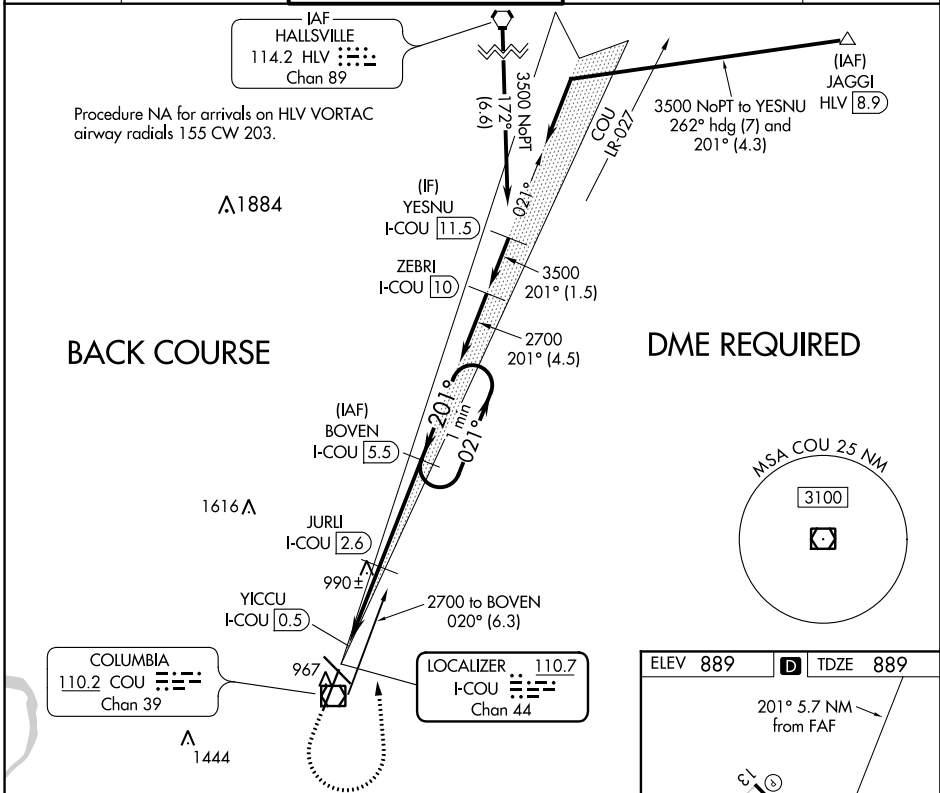
LOC/DME I-COU 110.7 Chan 44	APP CRS 201°	Rwy Idg TDZE Apt Elev	6501 889 889
--	------------------------	-----------------------------	---

LOC BC RWY 20

COLUMBIA RGNL (COU)

<p>⚠ Circling NA for Cat D west of Rwy 2 and 13. DME required.</p>	<p>ODALS ⚠</p>	<p>MISSED APPROACH: Climb to 1700 then climbing left turn to 2700 on heading 355° and I-COU localizer north course (021°) to BOVEN/I-COU 5.5 DME and hold.</p>
---	--------------------	--

ATIS 128.45	MIZZU APP CON 124.375 353.7	COLUMBIA TOWER★ 119.3 (CTAF) 363.25	COLUMBIA RADIO 121.5 243.0 255.4	GND CON 121.6
-----------------------	---------------------------------------	---	--	-------------------------



CATEGORY	A	B	C	D
S-LOC 20	1240-3/4 351 (400-3/4)		1240-7/8 351 (400-7/8)	
CIRCLING	1300-1 411 (500-1)	1340-1 451 (500-1)	1340-1 1/2 451 (500-1 1/2)	1440-2 551 (600-2)

NC-3, 01 FEB 2018 to 01 MAR 2018

NC-3, 01 FEB 2018 to 01 MAR 2018