

WAAS CH <b>53599</b> <b>W36A</b>	APP CRS <b>002°</b>	Rwy Idg <b>5500</b> TDZE <b>922</b> Apt Elev <b>922</b>
----------------------------------------	------------------------	---------------------------------------------------------------

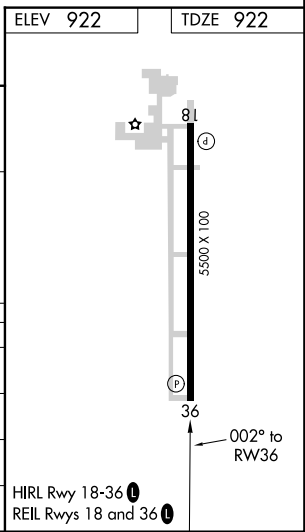
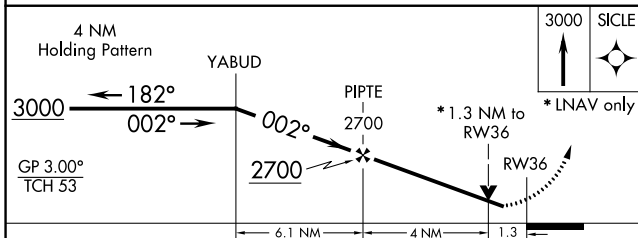
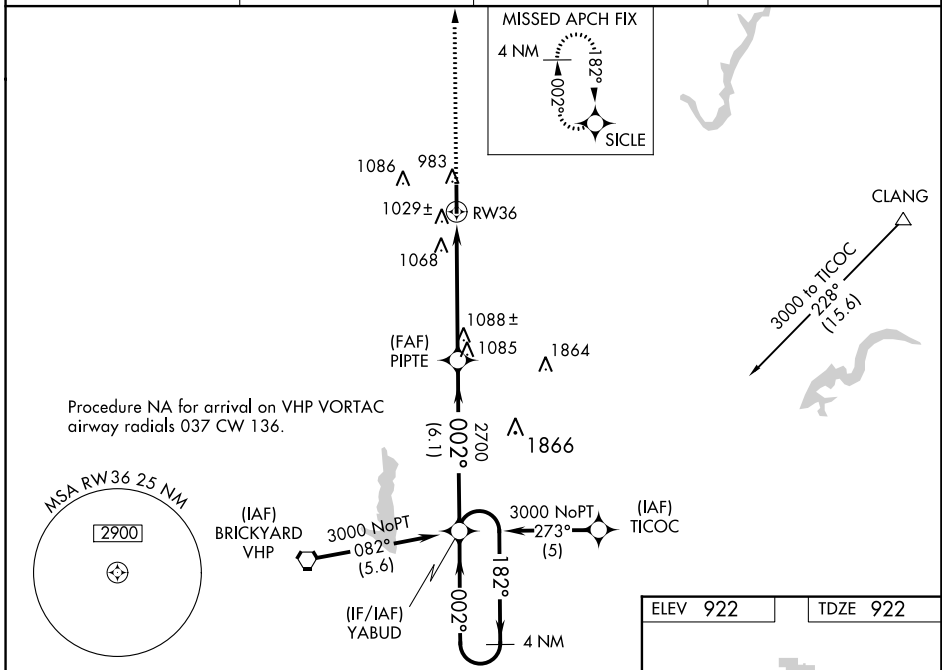
# RNAV (GPS) RWY 36

INDIANAPOLIS EXECUTIVE (TYQ)

**NA** Baro-VNAV NA when using Indianapolis Intl altimeter setting. For uncompensated Baro-VNAV systems, LNAV/VNAV NA below -16°C (4°F) or above 47°C (116°F). DME/DME RNP-0.3 NA. Rwy 36 helicopter visibility reduction below ¾ SM NA. VDP NA with Indianapolis Intl altimeter setting. When local altimeter setting not received, use Indianapolis Intl altimeter setting and increase all DA 62 feet and all visibilities ¼ mile; increase all MDA 80 feet, and LNAV Cats C/D and Circling Cat C visibility ¼ mile.

**MISSED APPROACH:**  
Climb to 3000 direct SICLE and hold.

AWOS-3PT <b>120.725</b>	INDIANAPOLIS APP CON <b>124.65 127.15 317.8</b>	GCO <b>121.725</b>	UNICOM <b>123.05 (CTAF)</b>
----------------------------	----------------------------------------------------	-----------------------	--------------------------------



CATEGORY	A	B	C	D
LPV DA	1240-1		318 (400-1)	
LNAV/VNAV DA	1299-1¼		377 (400-1¼)	
LNAV MDA	1400-1	478 (500-1)	1400-1¼ 478 (500-1¼)	1400-1½ 478 (500-1½)
CIRCLING	1400-1	478 (500-1)	1400-1½ 478 (500-1½)	1480-2 558 (600-2)

EC-2: 01 FEB 2018 to 01 MAR 2018

EC-2: 01 FEB 2018 to 01 MAR 2018