

WAAS CH 45710 W28A	APP CRS 281°	Rwy Idg TDZE Apt Elev	3401 423 427
--	------------------------	-----------------------------	---

RNAV (GPS) RWY 28R

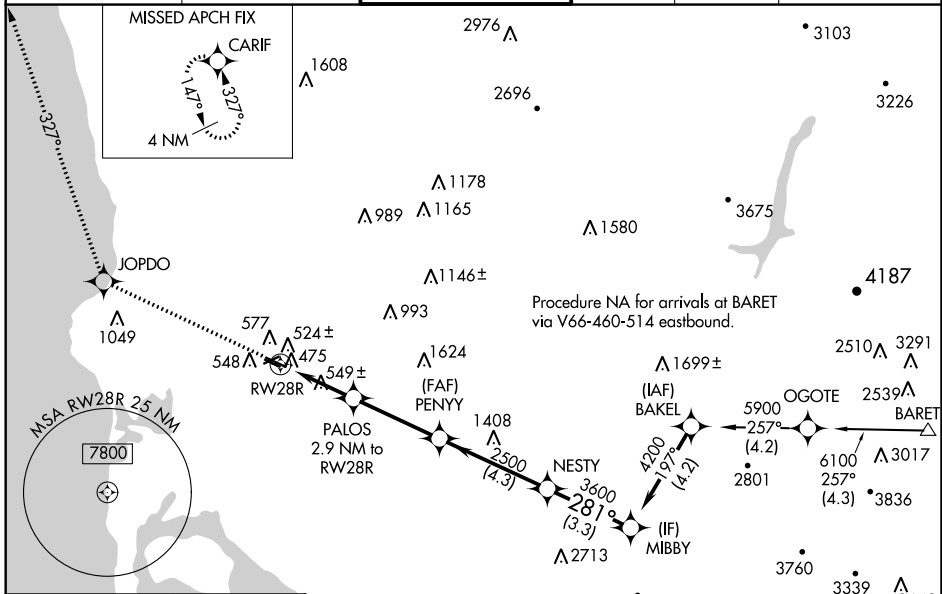
MONTGOMERY-GIBBS EXECUTIVE (MYF)

⚠ For uncompensated Baro-VNAV systems, LNAV/VNAV NA below -15°C (5°F) or above 54°C (130°F). DME/DME RNP-0.3 NA. VDP NA with San Diego Intl altimeter setting. Baro-VNAV NA when using San Diego Intl altimeter setting. When local altimeter setting not received, use San Diego Intl altimeter setting and increase all DA 71 feet and all MDA 80 feet and increase LNAV/VNAV all Cats visibility ¼ mile. For inoperative MALSR when using San Diego Intl altimeter setting increase LPV all Cats visibility to 1 mile.



MISSED APPROACH:
Climb to 3000 direct JOPDO and on track 327° to CARIF and hold.

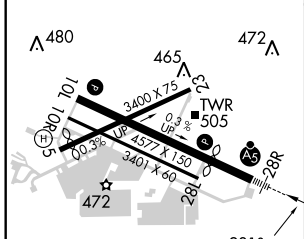
ATIS 126.9	SOCAL APP CON 124.35 279.625	MONTGOMERY TOWER * 119.2 (CTAF) 0 269.4	GND CON 118.225	CLNC DEL 123.725	SAN DIEGO RADIO 122.4
----------------------	--	---	---------------------------	----------------------------	---------------------------------



SW-3, 01 FEB 2018 to 01 MAR 2018

SW-3, 01 FEB 2018 to 01 MAR 2018

ELEV 427	TDZE 423
-----------------	-----------------



REIL Rwy 28L MIRL Rwy 10L-28R

3000	JOPDO	tr 327°	CARIF				
*LNAV only			PALOS 2.9 NM to RW28R	PENNY 2500	NESTY 3600	MIBBY 4200	GP 3.00° TCH 41
			1.2 NM to RW28R	1380*	2500	281°	4200
			-1.2 NM	-1.7 NM	-3.4 NM	-4.3 NM	-3.3 NM

CATEGORY	A	B	C	D
LPV DA	623-½	200 (200-½)		NA
LNAV/VNAV DA	750-¾	327 (400-¾)		NA
LNAV MDA	840-½	417 (500-½)		NA
CIRCLING	880-1	453 (500-1)		NA