

LOC/DME I-MYF 111.95 Chan 56(Y)	APP CRS 281°	Rwy Idg 3401 TDZE 423 Apt Elev 427
----------------------------------------------	------------------------	---------------------------------------------------------------

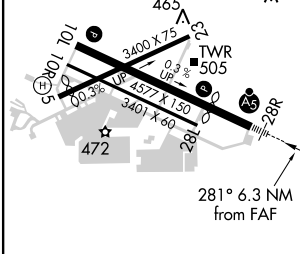
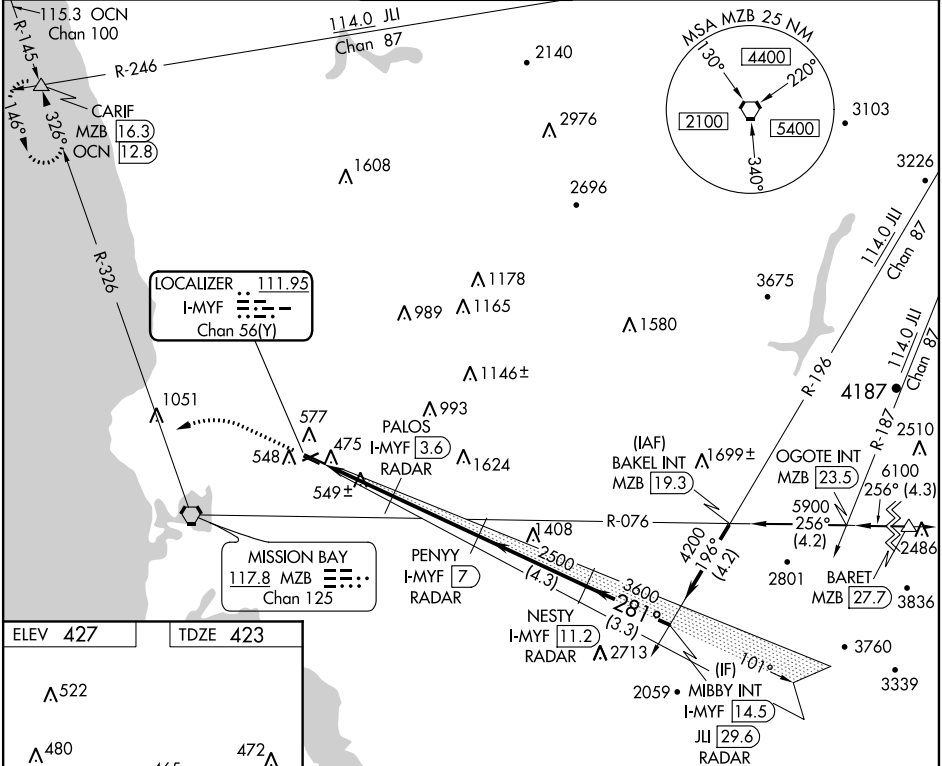
ILS or LOC RWY 28R

MONTGOMERY-GIBBS EXECUTIVE (MYF)

▼ DME or RADAR required. VDP NA with San Diego Intl altimeter setting.
▲ When local altimeter setting not received, use San Diego Intl altimeter setting and increase all DA 71 feet and all MDA 80 feet.
 For inoperative MALSR when using San Diego Intl altimeter setting, increase S-ILS 28R all Cats visibility to 1 mile.

MALSR MISSED APPROACH: Climb to 1100 then climbing left turn to 3000 via heading 270° and MZB VORTAC R-326 to CARIF INT/MZB 16.3 DME and hold.

ATIS 126.9	SOCAL APP CON 124.35 279.625	MONTGOMERY TOWER* 119.2 (CTAF) 0 269.4	GND CON 118.225	CLNC DEL 123.725	SAN DIEGO RADIO 122.4
----------------------	----------------------------------------	--------------------------------------------------	---------------------------	----------------------------	---------------------------------



ELEV 427	TDZE 423	1100	3000	MZB R-326	CARIF	2500	281°	3600	4200
		↑ hdg 270°				PENNY I-MYF (7) RADAR		NESTY I-MYF (11.2) RADAR	
		*LOC only		PALOS I-MYF (3.6) RADAR		MIBBY INT I-MYF (14.5) RADAR		Procedure Turn NA	
		I-MYF (0.7)		*I-MYF (1.7)		2500		4200	
		1.1 NM		1.9 NM		3.4 NM		4.3 NM	
		GS 3.00°		TCH 41					

REIL Rwy 28L	MIRL Rwy 10L-28R	FAF to MAP 6.3 NM			
Knots	60	90	120	150	180
Min:Sec	6:18	4:12	3:09	2:31	2:06

CATEGORY	A	B	C	D
S-ILS 28R	623-½	200 (200-½)		NA
S-LOC 28R	800-½	377 (400-½)		NA
CIRCLING	880-1	453 (500-1)		NA

SW-3, 01 FEB 2018 to 01 MAR 2018

SW-3, 01 FEB 2018 to 01 MAR 2018