

18032
AIRPORT DIAGRAM

MONTGOMERY-GIBBS EXECUTIVE (MYF)
 AL-5401 (FAA) SAN DIEGO, CALIFORNIA

ATIS
 126.9
 MONTGOMERY TOWER ★
 119.2 269.4
 GND CON
 118.225
 CLNC DEL
 123.725

576
 ▲

32°49.5'N

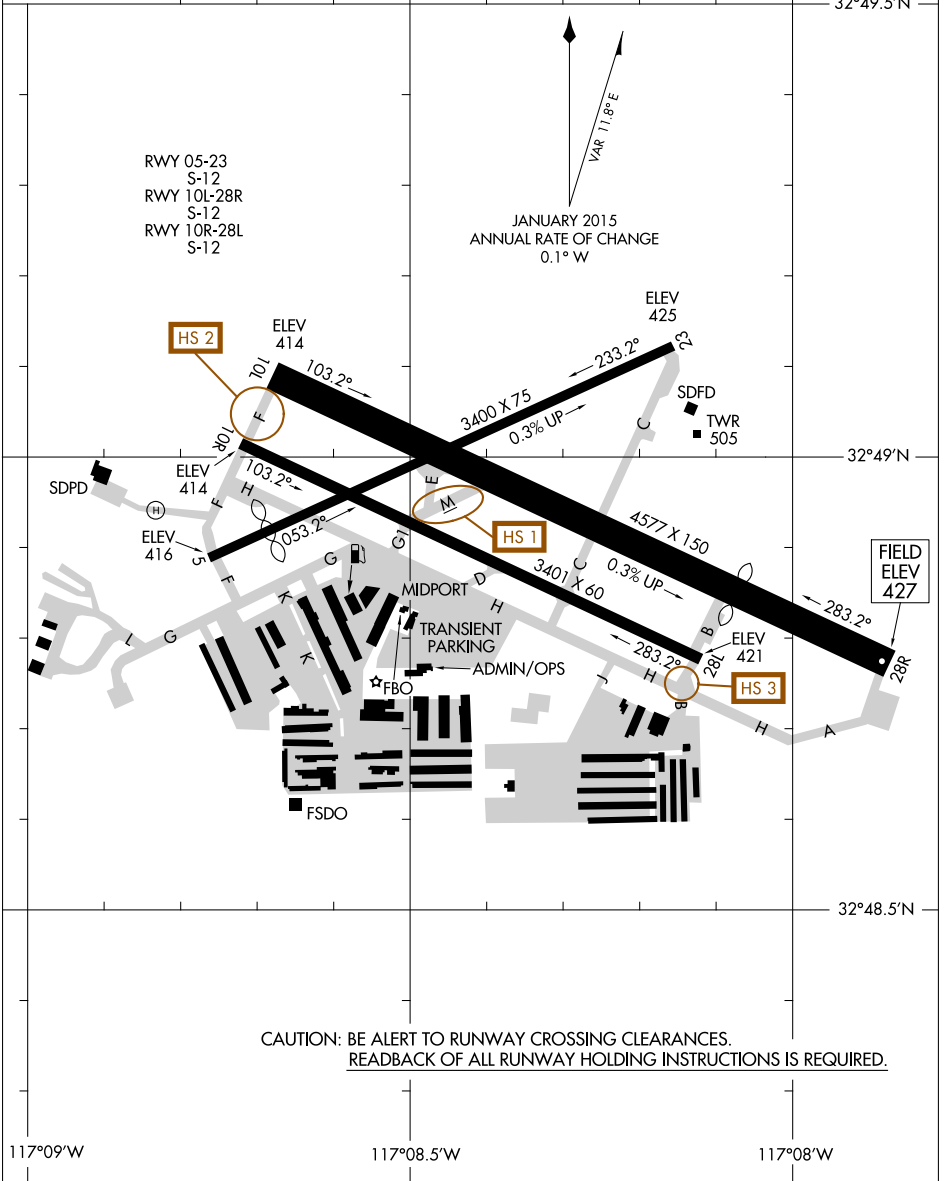
RWY 05-23
 S-12
 RWY 10L-28R
 S-12
 RWY 10R-28L
 S-12

JANUARY 2015
 ANNUAL RATE OF CHANGE
 0.1° W



SW-3, 01 FEB 2018 to 01 MAR 2018

SW-3, 01 FEB 2018 to 01 MAR 2018



CAUTION: BE ALERT TO RUNWAY CROSSING CLEARANCES.
READBACK OF ALL RUNWAY HOLDING INSTRUCTIONS IS REQUIRED.

117°09'W

117°08.5'W

117°08'W

AIRPORT DIAGRAM
 18032

SAN DIEGO, CALIFORNIA
MONTGOMERY-GIBBS EXECUTIVE (MYF)