

WAAS CH <b>48910</b> <b>W05A</b>	APP CRS <b>051°</b>	Rwy Idg <b>5722</b> TDZE <b>470</b> Apt Elev <b>480</b>
--	------------------------	---

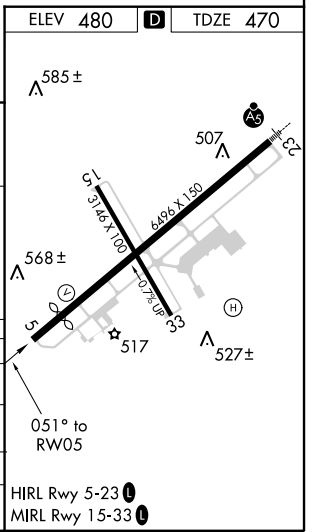
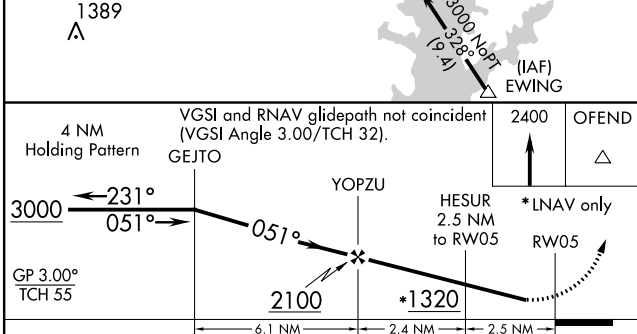
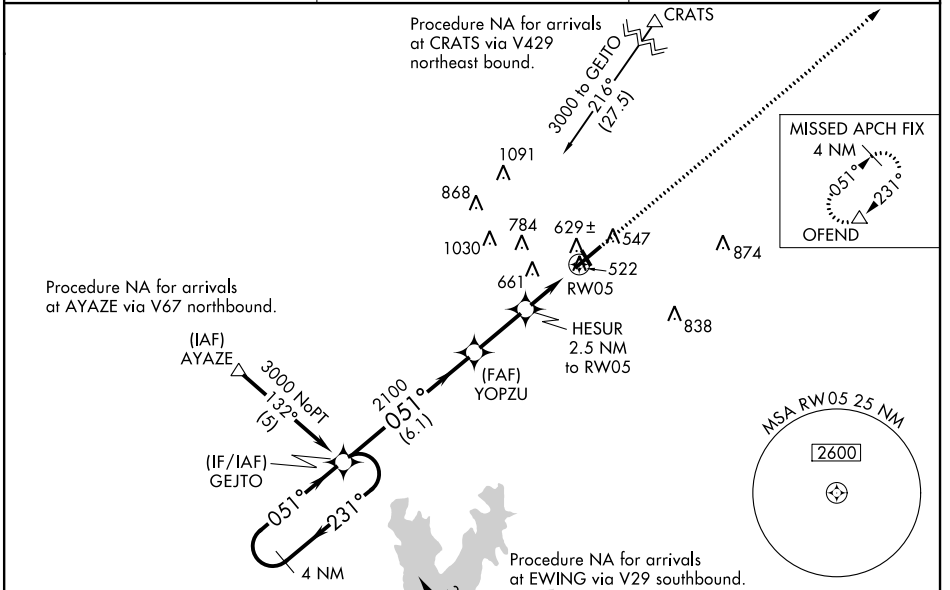
# RNAV (GPS) RWY 5

MOUNT VERNON (MVN)

**⚠** For uncompensated Baro-VNAV systems, LNAV/VNAV NA below -15° C (5°F) or above 48° C (118° F). DME/DME RNP-0.3 NA. Visibility reduction by helicopters NA. When local altimeter setting not received, use Centralia altimeter setting and increase all DA 45 feet, all MDA 60 feet, and increase LNAV/VNAV all Cats visibility ¼ mile, LNAV and Circling Cat D visibility ¼ mile. Baro-VNAV NA when using Centralia altimeter setting. Circling to Rwy 15/33 NA at night.

**MISSED APPROACH:**  
Climb to 2400 direct OFEND and hold.

AWOS-3PT <b>113.8</b>	KANSAS CITY CENTER <b>127.7 351.825</b>	UNICOM <b>123.0(CTAF) 0</b>
--------------------------	--	--------------------------------



CATEGORY	A	B	C	D
LPV DA		802-1¼	332 (400-1¼)	
LNAV/VNAV DA		838-1¼	368 (400-1¼)	
LNAV MDA	880-1	410 (400-1)	880-1¼	410 (400-1¼)
CIRCLING	1000-1	520 (600-1)	1000-1½	1140-2 660 (700-2)

EC-3, 01 FEB 2018 to 01 MAR 2018

EC-3, 01 FEB 2018 to 01 MAR 2018