

LOC I-MVN 111.7	APP CRS 231°	Rwy ldg 5572
		TDZE 471
		Apt Elev 480

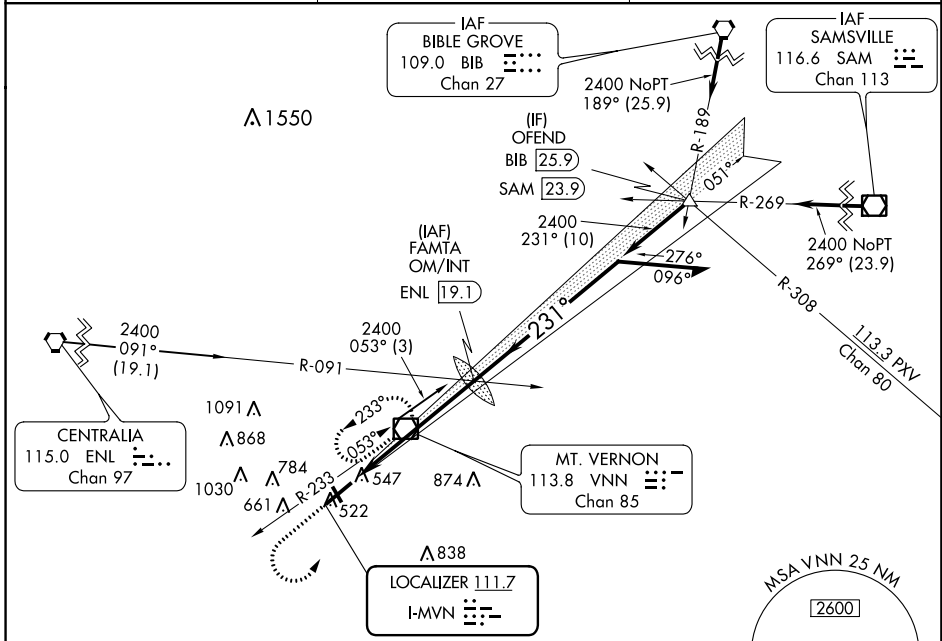
ILS or LOC RWY 23

MOUNT VERNON (MVN)

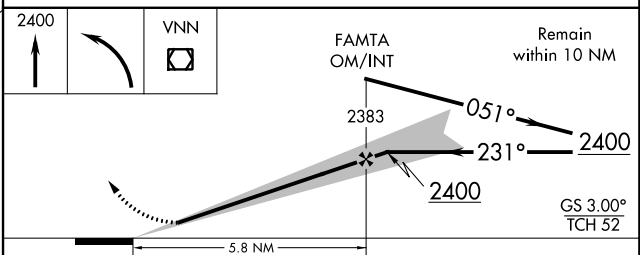
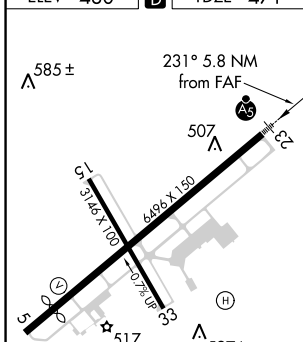
⚠ Circling to Rwy 15/33 NA at night. When local altimeter setting not received, use Centralia altimeter setting and increase all DA 45 feet and all MDA 60 feet, and increase S-LOC 23 Cat C/D and Circling Cat C visibility ¼ mile.

MALSRS MISSED APPROACH: Climb to 2400 then left turn direct VNN VOR/DME and hold.

AWOS-3PT 113.8	KANSAS CITY CENTER 127.7 351.825	UNICOM 123.0(CTAF) 0
--------------------------	--	--------------------------------



ELEV 480	D	TDZE 471
----------	----------	----------



CATEGORY	A	B	C	D
S-ILS 23	671-½ 200 (200-½)			
S-LOC 23	1020-½ 549 (600-½)	1020-1⅛ 549 (600-1⅛)		
C CIRCLING	1020-1 540 (600-1)	1140-1¾ 660 (700-1¾)	1380-3 900 (1000-3)	

FAF to MAP 5.8 NM					
Knots	60	90	120	150	180
Min:Sec	5:48	3:52	2:54	2:19	1:56

EC-3, 01 FEB 2018 to 01 MAR 2018

EC-3, 01 FEB 2018 to 01 MAR 2018