

WAAS CH 45505 W26A	APP CRS 264°	Rwy Idg TDZE Apt Elev	5500 671 672
--	------------------------	-----------------------------	---

RNAV (GPS) RWY 26

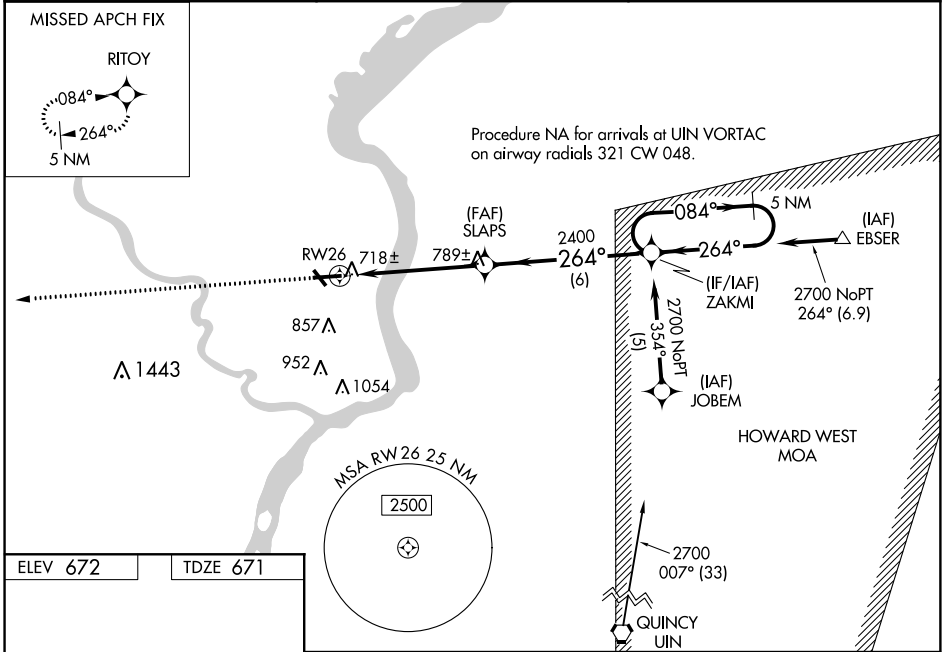
KEOKUK MUNI (EOK)

⚠ DME/DME RNP -0.3 NA. For uncompensated Baro-VNAV systems, LNAV/VNAV NA below -1.6°C (4°F) or above 54°C (130°F). When local altimeter setting not received, use Burlington altimeter setting and increase all DA 59 feet and all MDA 60 feet, increase Circling Cat C visibility ½ mile. For inoperative MALSRL, increase LNAV/VNAV and LNAV Cat A/B/C visibility to 1 mile. For inoperative MALSRL when using Burlington altimeter, setting, increase LNAV Cat A/B visibility to 1 mile. VDP and Baro-VNAV NA when using Burlington altimeter setting. For inoperative MALSRL, increase LPV, LNAV/VNAV and LNAV all Cats visibility to 1 mile. Circling to Rwy 32 NA at night.

MALSRL

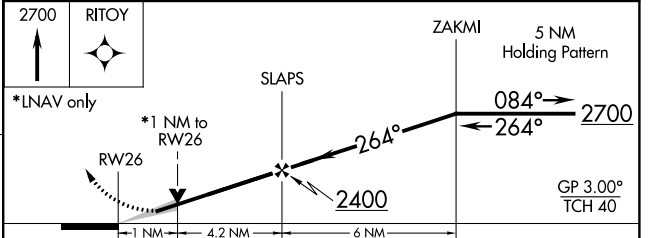
MISSED APPROACH:
Climb to 2700 direct RITOY and hold.

AWOS-3 118.375	KANSAS CITY CENTER 126.225 317.775	UNICOM 122.8 (CTAF) ①
--------------------------	--	---------------------------------



ELEV 672 TDZE 671

REIL Rwy 8, 14 and 32 ①
MIRL Rwy 8-26 and 14-32 ①



CATEGORY	A	B	C	D
LPV DA	925-3/4	254 (300-3/4)		NA
LNAV/VNAV DA	979-3/4	308 (400-3/4)		NA
LNAV MDA	1040-3/4	369 (400-3/4)		NA
CIRCLING	1180-1	508 (600-1)	1220-1 1/2 548 (600-1 1/2)	NA

NC-3: 01 FEB 2018 to 01 MAR 2018

NC-3: 01 FEB 2018 to 01 MAR 2018