

WAAS CH <b>90104</b> <b>W14A</b>	APP CRS <b>140°</b>	Rwy Idg <b>3576</b> TDZE <b>671</b> Apt Elev <b>672</b>
--	------------------------	---

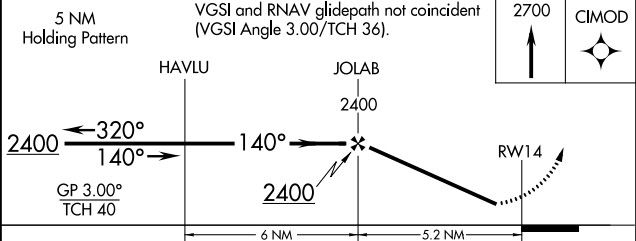
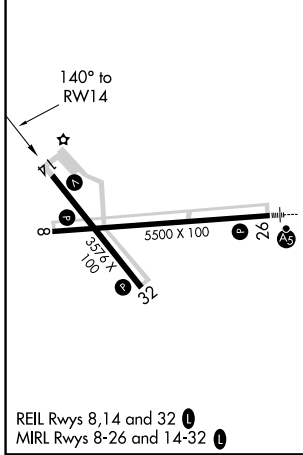
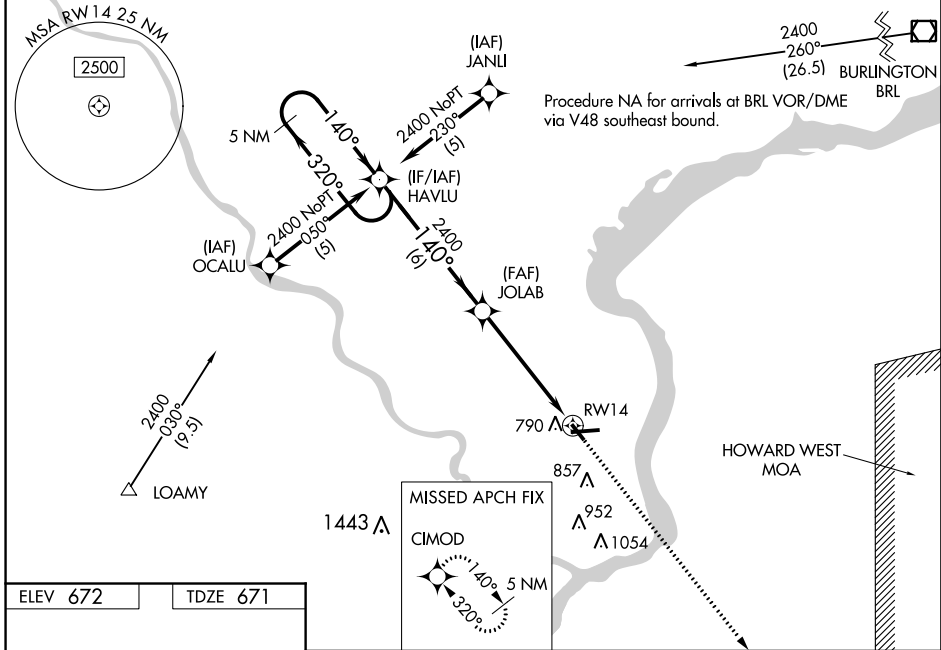
# RNAV (GPS) RWY 14

KEOKUK MUNI (EOK)

**⚠** Baro-VNAV NA when using Burlington altimeter setting. For uncompensated Baro-VNAV systems, LNAV/VNAV NA below -16°C (4°F) or above 54°C (130°F). DME/DME RNP -0.3 NA. Helicopter visibility reduction below 1 SM NA. When local altimeter setting not received, use Burlington altimeter setting and increase all DA 59 feet and all MDA 60 feet, increase LNAV and Circling Cat C visibility ¼ mile. Rwy 14 Straight-in and Circling and Circling to Rwy 32 NA at night.

**⚠** MISSED APPROACH: Climb to 2700 direct CIMOD and hold.

AWOS-3 <b>118.375</b>	KANSAS CITY CENTER <b>126.225 317.775</b>	UNICOM <b>122.8 (CTAF) 0</b>
--------------------------	--	---------------------------------



CATEGORY	A	B	C	D
LPV DA	949-1	278 (300-1)		NA
LNAV/VNAV DA	1040-1¼	369 (400-1¼)		NA
LNAV MDA	1040-1	369 (400-1)		NA
CIRCLING	1180-1	508 (600-1)	1220-1½ 548 (600-1½)	NA

NC-3: 01 FEB 2018 to 01 MAR 2018

NC-3: 01 FEB 2018 to 01 MAR 2018