

VOR/DME ATR	APP CRS	Rwy ldg	<b>5331</b>
<b>112.6</b>	<b>234°</b>	TDZE	<b>51</b>
Chan <b>73</b>		Apt Elev	<b>50</b>

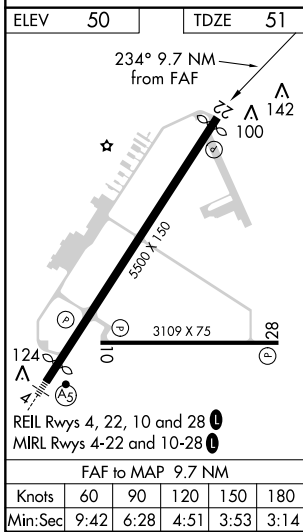
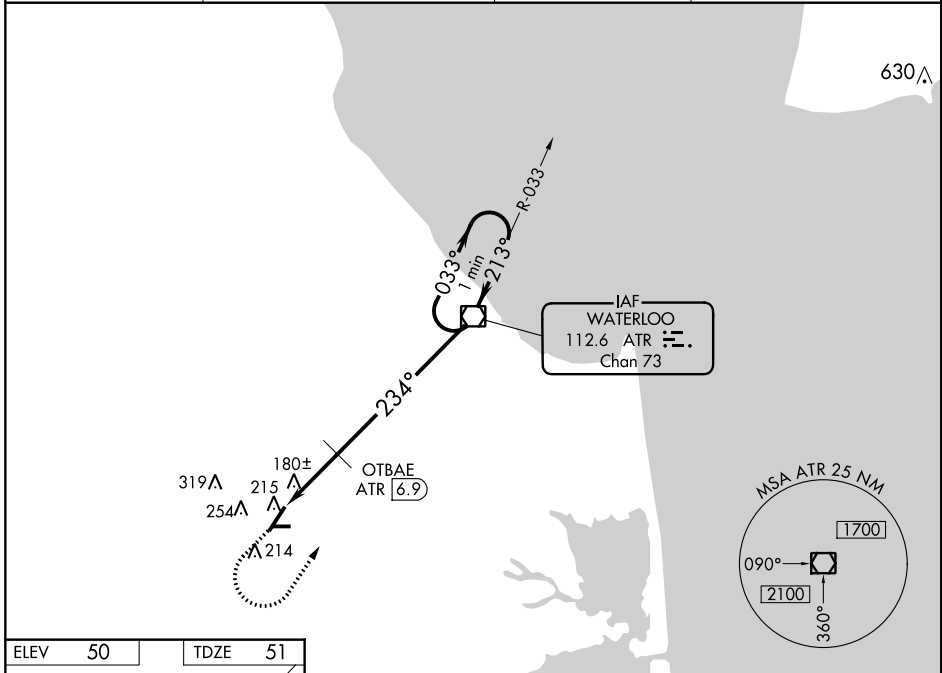
# VOR RWY 22

DELAWARE COASTAL (GED)

**▼** When local altimeter setting not received, use Salisbury altimeter setting and increase all MDA 60 feet; increase S-22 and Circling Cats C/D visibility ¼ mile;  
**▲** OTBAE fix minimums increase S-22 and Circling Cats C/D visibility ¼ mile. Circling Rwy 10, 28 NA at night.

**MISSED APPROACH:** Climb to 800 then climbing left turn to 3000 direct ATR VOR/DME and hold.

ASOS <b>118.375</b>	DOVER APP CON <b>132.425 257.875</b>	CLNC DEL <b>125.55</b>	UNICOM <b>123.0 (CTAF) 0</b>
------------------------	---	---------------------------	---------------------------------



CATEGORY	A		B		C		D	
	S-22	680-1	629 (700-1)	680-1¾	629 (700-1¾)	720-1¾	670 (700-1¾)	720-2
<b>C</b> CIRCLING	680-1	630 (700-1)	720-1¾	670 (700-1¾)	720-2	670 (700-2)		
OTBAE FIX MINIMUMS								
S-22	440-1	389 (400-1)	440-1½	389 (400-1½)				
<b>C</b> CIRCLING	560-1	510 (600-1)	580-1	530 (600-1)	720-1¾	670 (700-1¾)	720-2	670 (700-2)

NE-3, 01 FEB 2018 to 01 MAR 2018

NE-3, 01 FEB 2018 to 01 MAR 2018