


WAAS CH 90229 W35A	APP CRS 355°	Rwy Idg 12250 TDZE 496 Apt Elev 542
---------------------------------	------------------------	--

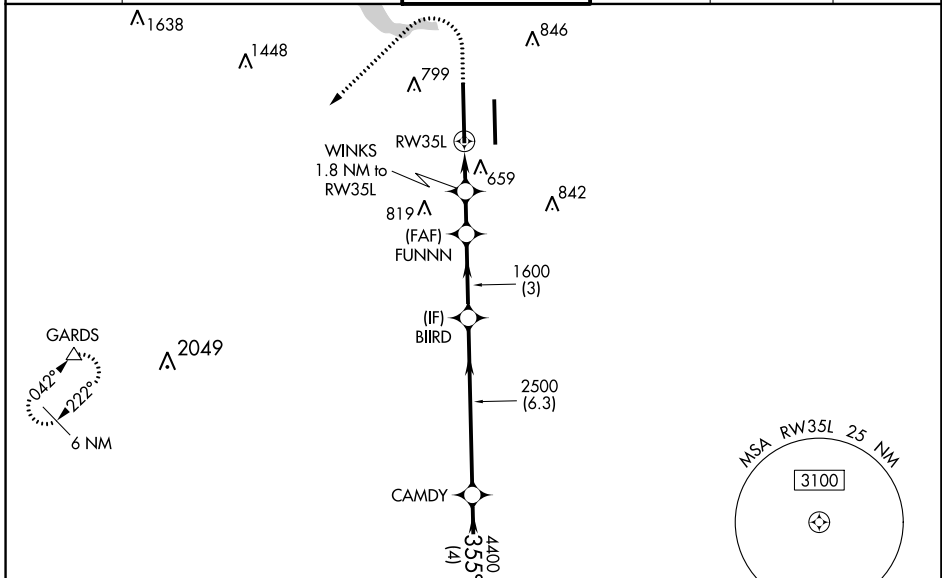
RNAV (GPS) Y RWY 35L

AUSTIN-BERGSTROM INTL (AUS)

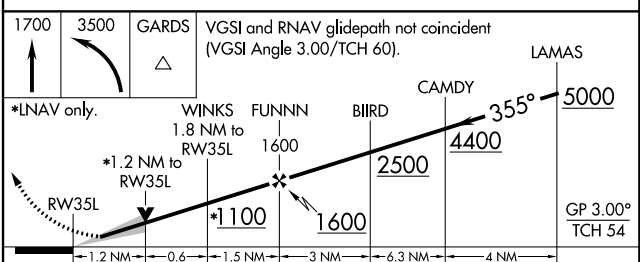
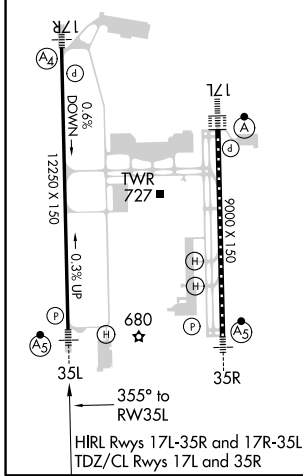
⚠ For uncompensated Baro-VNAV systems, LNAV/VNAV NA below -6°C (22°F) or above 54°C (130°F). Simultaneous approach authorized. LNAV procedure NA during simultaneous operations. Use of FD or AP providing RNAV track guidance required during simultaneous operations. DME/DME RNP-0.3 NA. For mop ALS increase LPV Cat E visibility to RVR 4000, LNAV/VNAV Cat E visibility to 1½ SM, and LNAV Cat E visibility to 1¼ SM. **RVR 1800 authorized with use of FD or AP or HUD to DA.

MALSR
 MISSED APPROACH: Climb to 1700 then climbing left turn to 3500 direct GARDS and hold.

D-ATIS 124.4	AUSTIN APP CON 127.225 317.65 (EAST) 120.875 270.25 (SOUTH) 119.0 370.85 (WEST)	AUSTIN TOWER 121.0 281.5	GND CON 121.9 348.6	CLNC DEL 125.5 263.0	CPDLC
------------------------	---	------------------------------------	-------------------------------	--------------------------------	-------



ELEV 542	D	TDZE 496
-----------------	----------	-----------------



CATEGORY	A	B	C	D	E
LPV DA **	696/24		200 (200-½)		
LNAV/VNAV DA	972/60		476 (500-1¼)		
LNAV MDA	920/24	424 (400-½)	920/40		424 (400-¾)
<input checked="" type="checkbox"/> CIRCLING	1040-1 498 (500-1)	1100-1 558 (600-1)	1200-1¾ 658 (700-1¾)	1200-2 658 (700-2)	1520-3 978 (1000-3)