

WAAS CH 62829 W17A	APP CRS 175°	Rwy Idg TDZE 492 Apt Elev 542	9000
--	------------------------	---	-------------

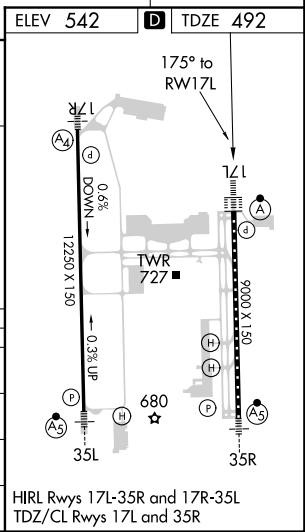
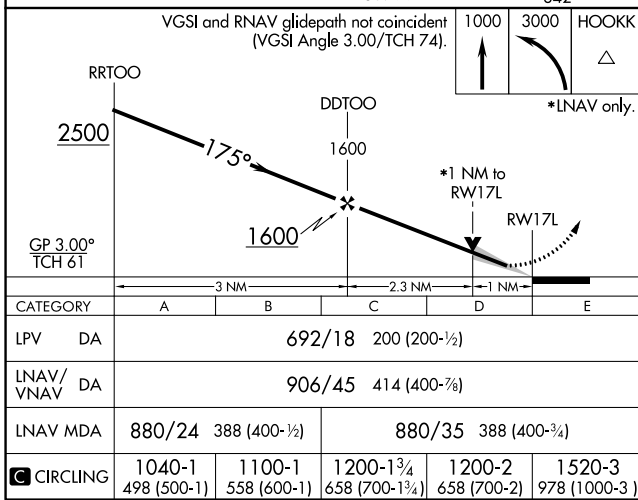
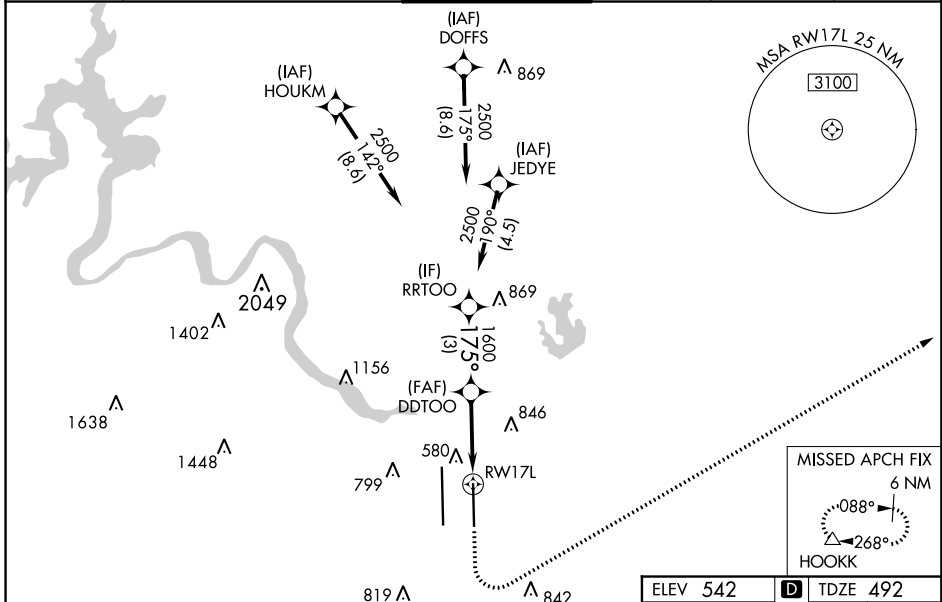
RNAV (GPS) Y RWY 17L

AUSTIN-BERGSTROM INTL (AUS)

For uncompensated Baro-VNAV systems, LNAV/VNAV NA below -6°C (22°F) or above 54°C (130°F). Simultaneous approach authorized. LNAV procedure NA during simultaneous operations. Use of FD or AP providing RNAV track guidance required during simultaneous operations. DME/DME RNP -0.3 NA. For inop ALS, increase LPV Cat E visibility to RVR 4000, increase LNAV/VNAV Cat E visibility to 1 3/8 SM and increase LNAV Cat E visibility to RVR 6000.

ALSF-2
MISSED APPROACH:
Climb to 1000 then climbing left turn to 3000 direct HOOKK and hold.

D-ATIS 124.4	AUSTIN APP CON 127.225 317.65 (EAST) 120.875 270.25 (SOUTH) 119.0 370.85 (WEST)	AUSTIN TOWER 121.0 281.5	GND CON 121.9 348.6	CLNC DEL 125.5 263.0	CPDLC
------------------------	---	------------------------------------	-------------------------------	--------------------------------	-------



SC-3, 01 FEB 2018 to 01 MAR 2018

SC-3, 01 FEB 2018 to 01 MAR 2018