

APP CRS 355°	Rwy Idg 12250 TDZE 496 Apt Elev 542
------------------------	----------------------------------------------------------------

RNAV (RNP) Z RWY 35L

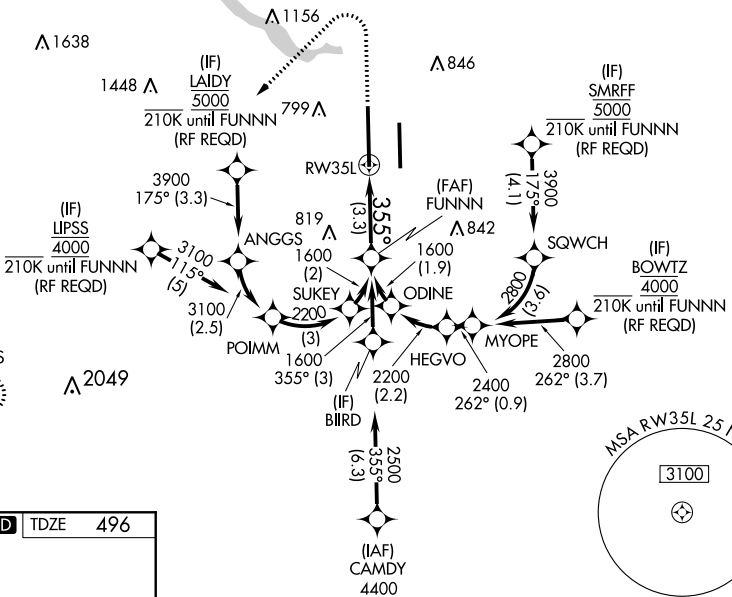
AUSTIN-BERGSTROM INTL (AUS)

▼ For uncompensated Baro-VNAV systems, procedure NA below -6°C (22°F) or above 54°C (130°F). Simultaneous approach authorized. GPS required. For inop ALS, increase RNP 0.11 all Cats visibility to RVR 4500 and RNP 0.30 all Cats visibility to 1½ SM.

MALSR MISSED APPROACH: Climb to 1700 then climbing left turn to 3500 direct GARDS and hold.

D-ATIS 124.4	AUSTIN APP CON 127.225 317.65 (EAST) 120.875 270.25 (SOUTH) 119.0 370.85 (WEST)	AUSTIN TOWER 121.0 281.5	GND CON 121.9 348.6	CLNC DEL 125.5 263.0	CPDLC
------------------------	---------------------------------------------------------------------------------------------------------------	------------------------------------	-------------------------------	--------------------------------	-------

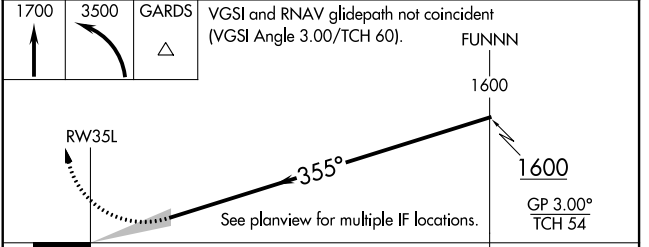
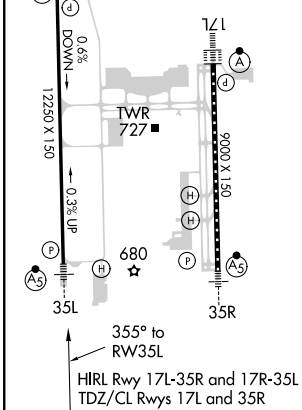
RADAR REQUIRED



SC-3, 01 FEB 2018 to 01 MAR 2018

SC-3, 01 FEB 2018 to 01 MAR 2018

ELEV 542	D	TDZE 496
-----------------	----------	-----------------



CATEGORY	A	B	C	D
RNP 0.11 DA		765/24	269 (300-½)	
RNP 0.30 DA		952/60	456 (500-1½)	

AUTHORIZATION REQUIRED