

LOC/DME I-HCE 110.5 Chan 42	APP CRS 355°	Rwy Idg 9000 TDZE 480 Apt Elev 542
---	------------------------	---

ILS or LOC RWY 35R

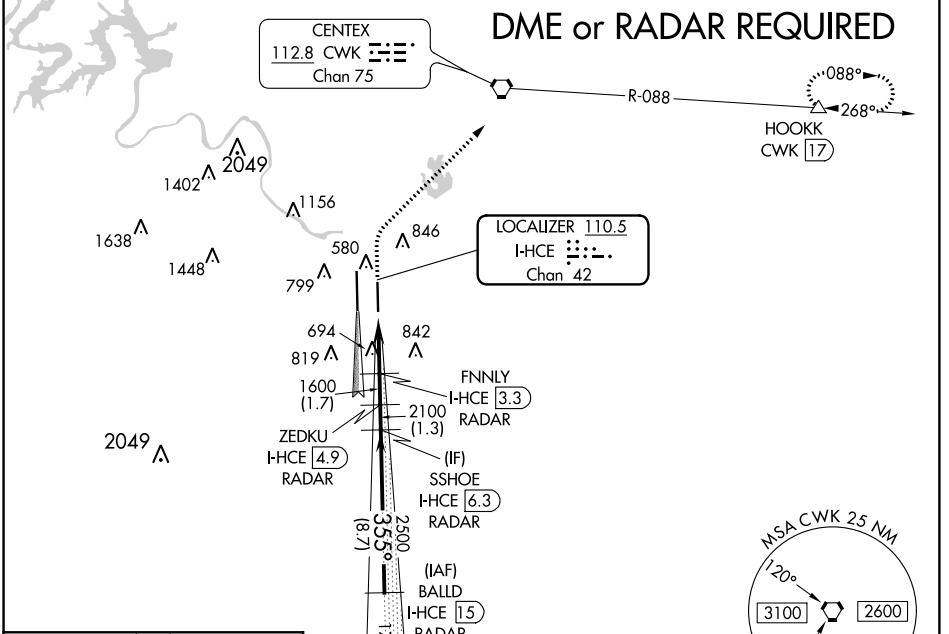
AUSTIN-BERGSTROM INTL (AUS)

Simultaneous approach authorized. DME required. For inop ALS, increase S-ILS 35R Cat E visibility to RVR 4000, S-LOC 35R Cats C/D/E visibility to 1/2 SM.

MALS R
AS

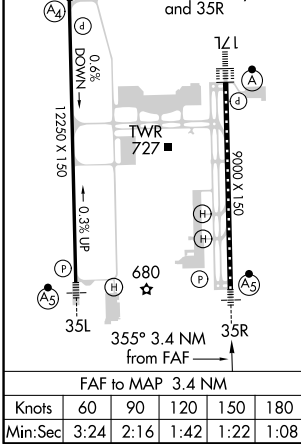
MISSED APPROACH: Climb to 1000 then climbing right turn to 3000 on heading 030° and CWK VORTAC R-088 to HOOKK/CWK 17 DME and hold.

D-ATIS 124.4	AUSTIN APP CON 127.225 317.65 (EAST) 120.875 270.25 (SOUTH) 119.0 370.85 (WEST)	AUSTIN TOWER 121.0 281.5	GND CON 121.9 348.6	CLNC DEL 125.5 263.0	CPDLC
------------------------	---	------------------------------------	-------------------------------	--------------------------------	-------



ELEV 542	D TDZE 480
-----------------	--------------------------

HIRL Rwy 17R-35L and 17L-35R
TDZ/CL Rwy 17L and 35R



1000	3000	CWK R-088	HOOKK	VGSI and ILS glidepath not coincident (VGSI Angle 3.00/TCH 59).	BALLD I-HCE 15
↑	hdg 030°		△	ZEDKU I-HCE 6.3	RADAR
*LOC only.					
I-HCE DME ANTENNA	I-HCE 0.1	*I-HCE 1.4	FINNLY I-HCE 3.3	ZEDKU I-HCE 4.9	SSHOE I-HCE 6.3
			RADAR	RADAR	RADAR
			1600	2100	2500
			1600	355°	4000
			1.5 NM	1.9 NM	1.7 NM
			1.3 NM	8.7 NM	
					GS 3.00° TCH 52

CATEGORY	A	B	C	D	E
S-ILS 35R	680/18 200 (200-1/2)				
S-LOC 35R	1000/24	520 (500-1/2)	1000/55	520 (500-1/4)	
C CIRCLING	1040-1 498 (500-1)	1100-1 558 (600-1)	1200-1 3/4 658 (700-1/4)	1200-2 658 (700-2)	1520-3 978 (1000-3)

SC-3, 01 FEB 2018 to 01 MAR 2018

SC-3, 01 FEB 2018 to 01 MAR 2018