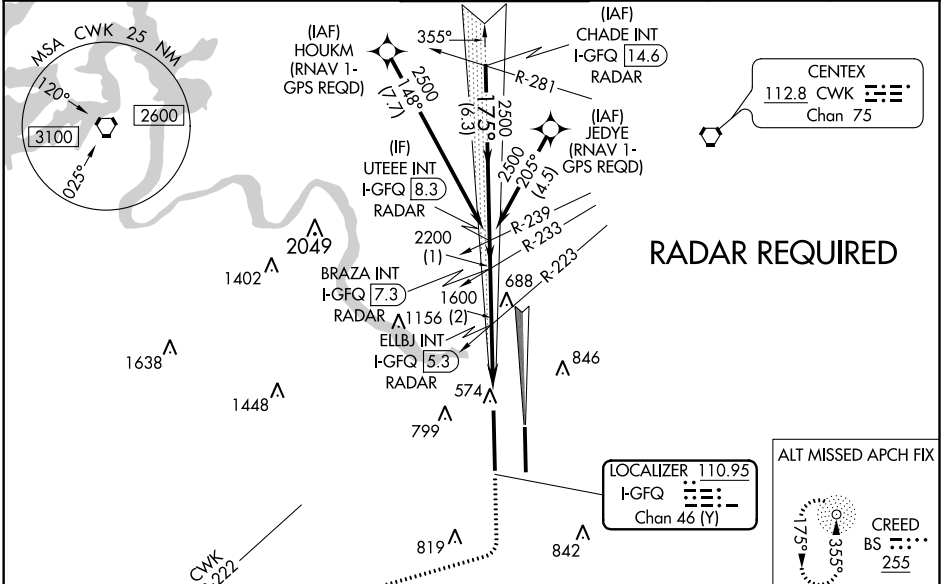


LOC/DME I-GFQ <b>110.95</b> Chan <b>46(Y)</b>	APP CRS <b>175°</b>	Rwy Idg <b>12250</b> TDZE <b>542</b> Apt Elev <b>542</b>
---	------------------------	--

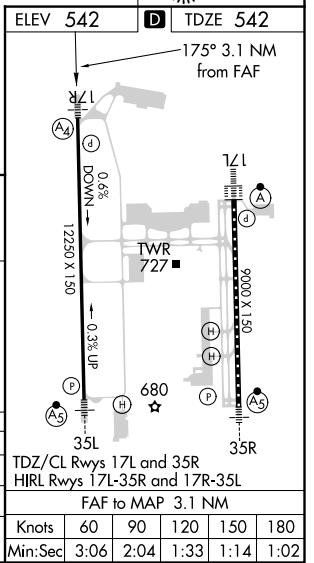
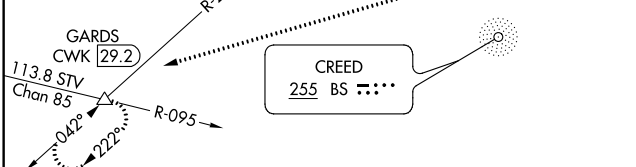
# ILS or LOC RWY 17R

AUSTIN-BERGSTROM INTL (AUS)

<p><b>Simultaneous approach authorized. For inop ALS, increase S-LOC 17R Cat C/D/E visibility to RVR 4500.</b></p>		<p>MAIS A4 =</p>	<p>MISSED APPROACH: Climb to 1000 then climbing right turn to 3500 on heading 250° and CWK VORTAC R-222 to GARDS INT/CWK 29.2 DME and hold.</p>		
D-ATIS <b>124.4</b>	AUSTIN APP CON <b>127.225 317.65</b> (EAST) <b>120.875 270.25</b> (SOUTH) <b>119.0 370.85</b> (WEST)	AUSTIN TOWER <b>121.0 281.5</b>	GND CON <b>121.9 348.6</b>	CLNC DEL <b>125.5 263.0</b>	CPDLC



**RADAR REQUIRED**



CATEGORY	A	B	C	D	E
S-ILS 17R	742/40		200 (200-¾)		
S-LOC 17R	840/40		298 (300-¾)		
CIRCLING	1040-1 498 (500-1)	1100-1 558 (600-1)	1200-1¾ 658 (700-1¾)	1200-2 658 (700-2)	1520-3 978 (1000-3)

SC-3, 01 FEB 2018 to 01 MAR 2018

SC-3, 01 FEB 2018 to 01 MAR 2018