

LOC/DME I-VNK 110.5 Chan 42	APP CRS 175°	Rwy Idg 9000 TDZE 492 Apt Elev 542
--	------------------------	---

ILS or LOC RWY 17L

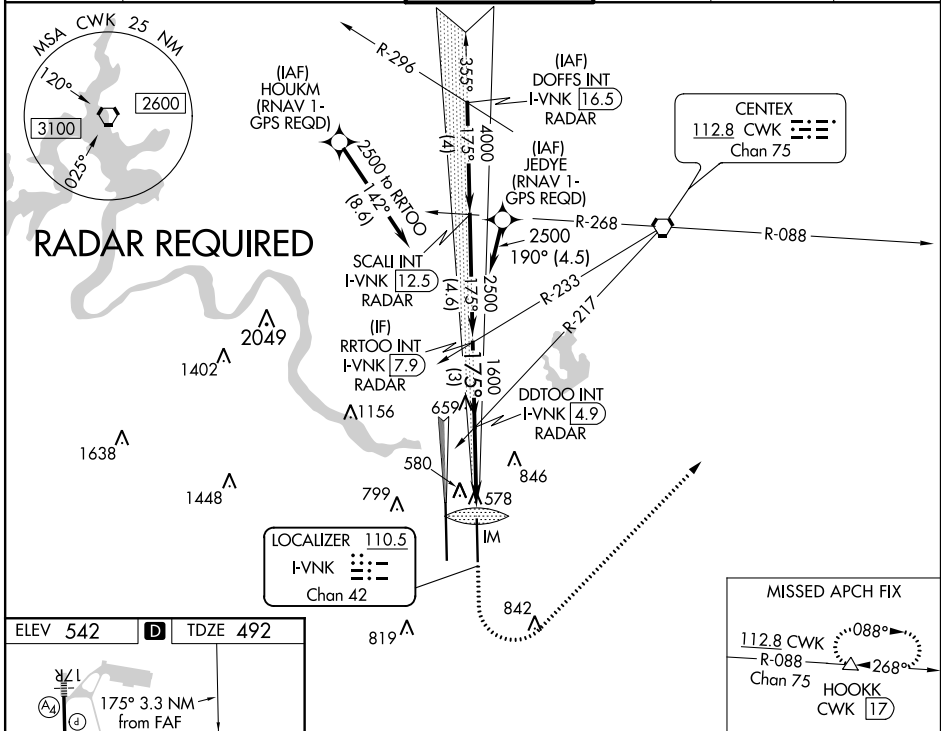
AUSTIN-BERGSTROM INTL (AUS)

⚠ Simultaneous approach authorized. DME required. For inop ALS, increase S-ILS 17L Cat E visibility to RVR 4000, and S-LOC 17L Cats C, D, E visibility to RVR 5500.

ALSF-2
(A)

MISSED APPROACH: Climb to 1000, then climbing left turn to 3000 on heading 040° and CWK VORTAC R-088 to HOOKK/CWK 17 DME and hold.

D-ATIS 124.4	AUSTIN APP CON 127.225 317.65 (EAST) 120.875 270.25 (SOUTH) 119.0 370.85 (WEST)	AUSTIN TOWER 121.0 281.5	GND CON 121.9 348.6	CLNC DEL 125.5 263.0	CPDLC
------------------------	---	------------------------------------	-------------------------------	--------------------------------	-------



ELEV 542	D	TDZE 492			
TDZ/CL Rws 17L and 35R HIRL Rws 17L-35R and 17R-35L FAF to MAP 3.3 NM					
Knots	60	90	120	150	180
Min:Sec	3:17	2:12	1:39	1:19	1:06

VGSi and ILS glidepath not coincident (VGSi Angle 3.00/TCH 74). RRTOO INT I-VNK (7.9) RADAR DDTOO INT I-VNK (4.9) RADAR		1000 3000 hdg 040°	CWK R-088 HOOKK		
GS 3.00° TCH 61 2500-175° 1600 *I-VNK (2.5) I-VNK (1.6)		*LOC only.			
CATEGORY	A	B	C	D	E
S-ILS 17L	692/18 200 (200-½)				
S-LOC 17L	840/24	348 (300-½)	840/30	348 (300-¾)	
C CIRCLING	1040-1 498 (500-1)	1100-1 558 (600-1)	1200-1¾ 658 (700-1¾)	1200-2 658 (700-2)	1520-3 978 (1000-3)

SC-3, 01 FEB 2018 to 01 MAR 2018

SC-3, 01 FEB 2018 to 01 MAR 2018