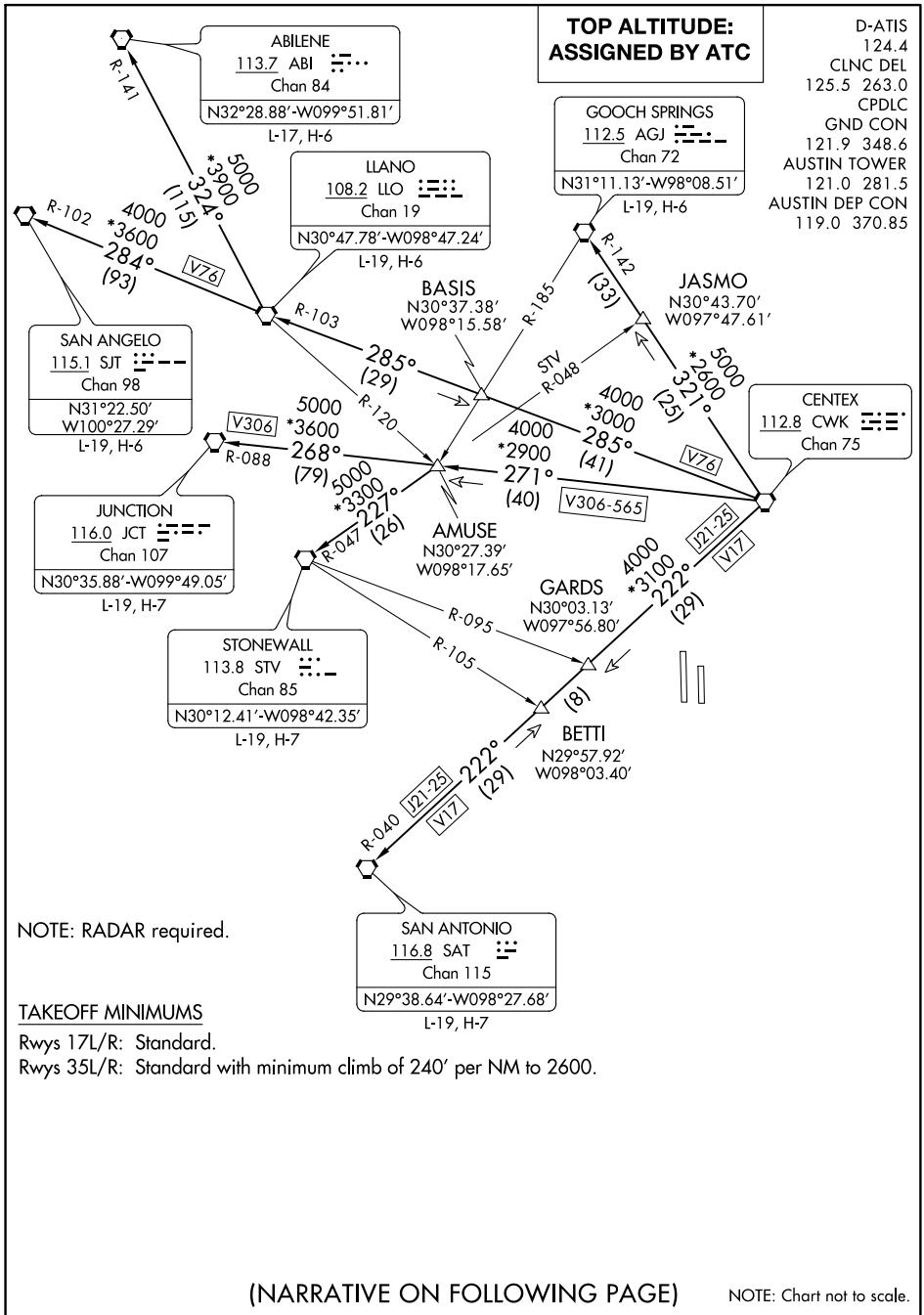


AUSTIN FIVE DEPARTURE

AL-556 (FAA)

AUSTIN-BERGSTROM INTL (AUS)

AUSTIN, TEXAS



SC-3, 01 FEB 2018 to 01 MAR 2018

SC-3, 01 FEB 2018 to 01 MAR 2018

NOTE: RADAR required.

TAKEOFF MINIMUMS

Rwys 17L/R: Standard.

Rwys 35L/R: Standard with minimum climb of 240' per NM to 2600.

(NARRATIVE ON FOLLOWING PAGE)

NOTE: Chart not to scale.

AUSTIN FIVE DEPARTURE

(AUS5.CWK) 07DEC17

AUSTIN, TEXAS

AUSTIN-BERGSTROM INTL (AUS)